



Korea Institute of Child Care and Education



06750 Diplomatic Center, 3F&4F, 2558, Nambusunhwan-ro, Seocho-gu, Seoul, Korea(06750)
tel. 82.2.398.7700 / fax. 82.2.398.7798
www.kicce.re.kr/eng/

Make your dreams come true with KICCE
육아정책연구소와 함께할 때, 꿈은 현실이 됩니다.

KICCE

Korea Institute of Child Care and Education



Under the Prime Minister
Korea Institute of
Child Care and Education

CONTENTS

04	Greetings
06	Vision
07	Organization
08	History
09	Research Areas
10	Research Projects in 2016
12	Research Plans in 2017
14	KICCE Network
15	Research Areas
16	Publications
17	Online Services



With hopes for a supportive and stable environment to children and happiness to their family, KICCE promotes the implementation of the future-oriented and creative policy on early childhood education and care through research, evaluation, and sharing of information.

GREETINGS

Welcome to the Korea Institute of Child Care and Education.

Korea Institute of Child Care and Education is a national policy research institute affiliated with the Economic and Social Research Institute of the Republic of Korea, established to efficiently support systematic and integrated parenting policies based on research and development policies.

Recently, the efficiency of the national financial investments in infants and children is emphasized, and the need for customized policy alternatives to adapt to changes in the various aspects of childhood care is growing. Korea Institute of Child Care and Education contributes to foster a foothold to develop a healthy and nurturing society through the establishment and implementation of leading childcare policies. In particular, we intend to continue studies to create a culture that values child care and family in order to settle the serious problems our nation is facing at this moment such as low fertility rate.

The realization of a creative and future-oriented parenting policy is a dream and hope for every home in Korea. Korea Institute of Child Care and Education will take the lead and work together to ensure that both infants and their families feel happy in our country.

Please continue to give us your support so that Korea Institute of Child Care and Education would develop into a future-oriented policy study institute that promotes happiness of infants and their families through policy studies for nurturing national human resources.



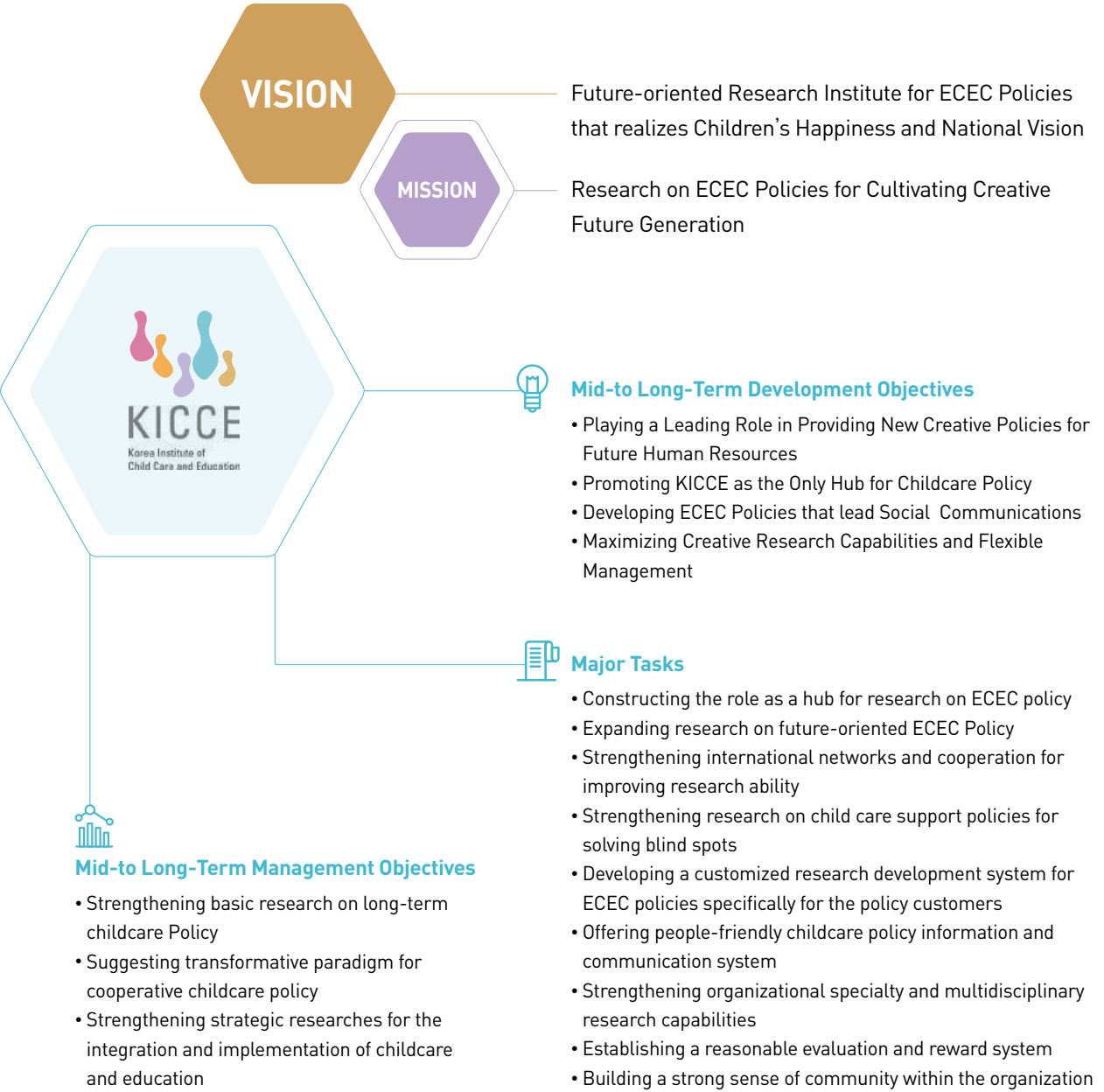
President
Korea Institute of Child Care and Education

Namhee WOO



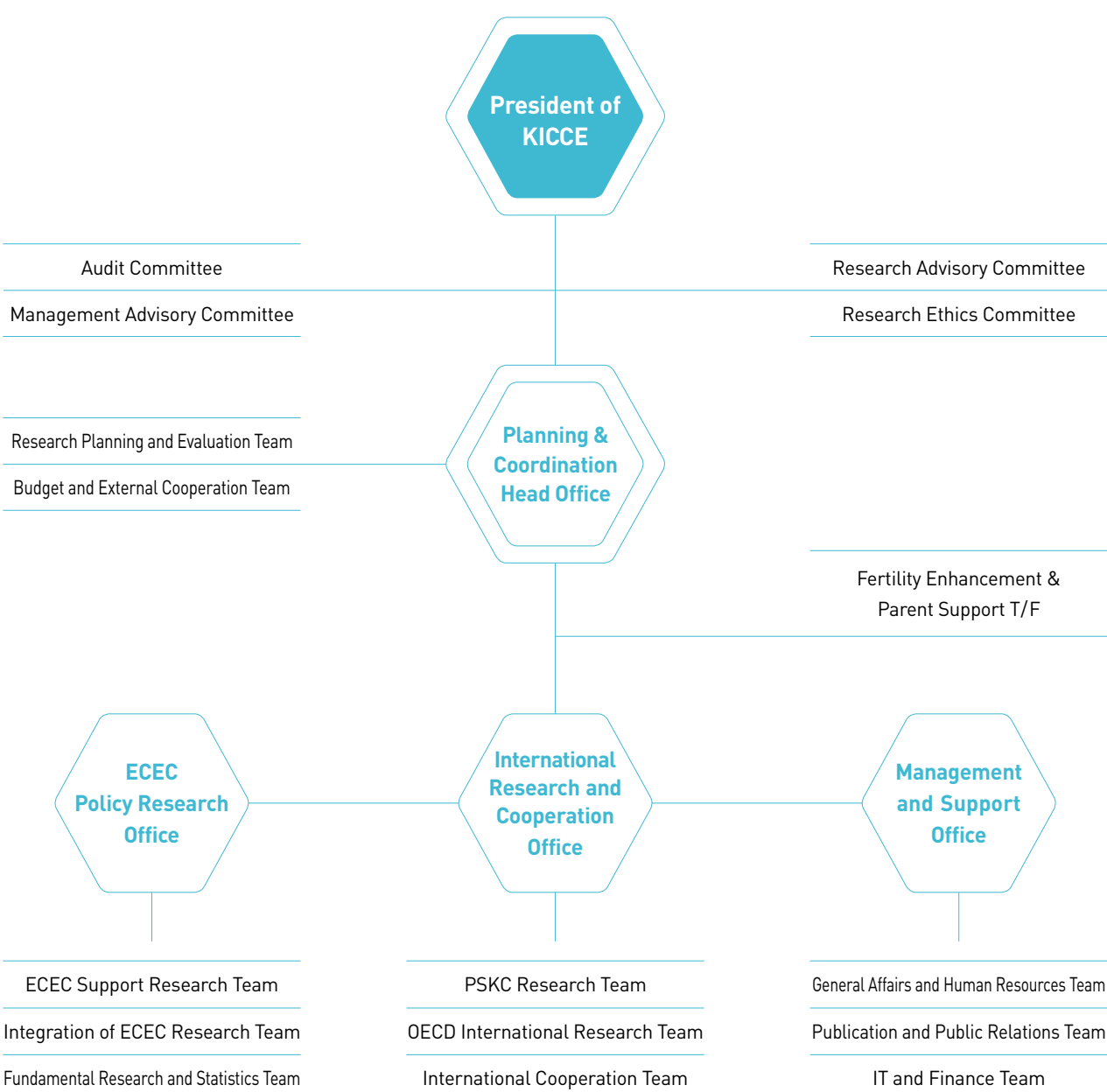
VISION

KICCE leads the way in the advancement of Korea through provision of the best early ECEC.



ORGANIZATION

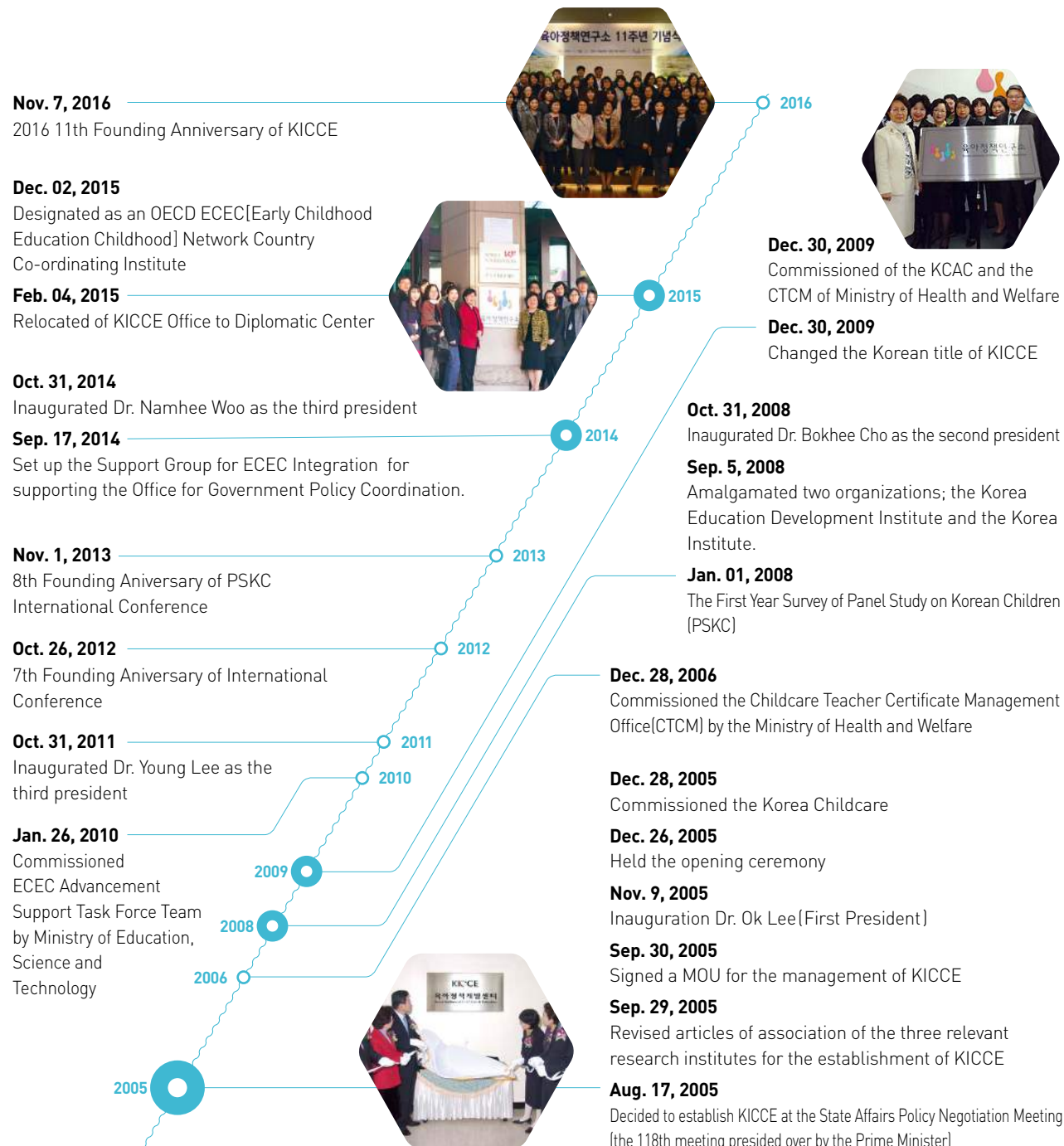
To develop and realize the best child care policy, we build a system that can maximize research capabilities and support research effectively.



HISTORY

08

KICCE is currently writing new history to develop the best child care policy agenda in this rapidly changing environment.



RESEARCH AREAS

09

To stand true to our purpose of conducting quality research on national human resource development, KICCE carries out timely research and plays a leading role in the development of ECEC policies. KICCE is keen to contribute to the advancement of Korea by developing effective policy measures on kindergartens and childcare centers, ECEC integration, improving ECEC support services, fostering future human resources, raising fertility rates and providing support for parents.

ECEC Support Research Team

To provide good family environment for young children, the ECEC Support Research Team conducts research on family child care support, child care institution support, community child care support, and protecting parental rights and suggests important implications for policy.

Integration of ECEC Research Team

Developing quality in Early Child-hood Education and Care, the Integration of ECEC Research Team carries out various studies in the operation of kindergarten and child care center and improved professional competences of ECEC staff.

Fundamental Research and Statistics Team

Fundamental Research and Statistics Team conducts basic research to devise long-term ECEC policy for children's healthy development and regularly produces statistics. Main examples of our research include childcare demand prediction, ECEC finance, standard expenses for childcare and education for young children, etc.

PSKC Research Team

Since its inception in 2008, the panel Study of Korean Children(PSKC) Research Team has collected data on infant lives for the first time in Korea and investigated the effects of ECEC policy on Korean child development. PSKC research team also strives to spread the research findings in other countries through translation and international seminar.

OECD International Research Team

To serves as the international research hub, the OECD International Research Team investigates the international trends in ECEC, disseminates the outcomes, and builds a research collaboration with various countries.

International Cooperation Team

International Cooperation Team is responsible for the research exchanges of KICCE and international institute around the globe. We also are dedicated to publishing the International Journal of Child Care and Education Policy to stimulate international childcare and early childhood education policy research.

RESEARCH PROJECTS IN 2016

KICCE endeavored to build a sturdy foundation for customer-oriented ECEC policy through policy researches and entrusted researches, contributing to the improvement of child-rearing environment and child care services.

Basic



- The Improvement in Policies To Support Parenting
- A Study on Evaluation and Improvement Measure of the Public Child Care and Education Supply Policy
- Implementation Strategies for ECEC Integration and its Settlement in Korea
- Research on Improvement of Infant Care: Focusing on Family Child Care Home
- Strategies for improving the environment of ECEC: exploring the most appropriate ratio of teachers vs. children
- A Study on the Current Status and Improvement of Private Education for Young Children (II): Focused on Two, Five-Year-Old Children
- Child Care supporting System Building for North Korean Refugee Parents of Young Children
- Perspectives and Values of Koreans on Becoming a Parent and Child-Rearing
- A Study on the Environment of Child-rearing and Development of Brain to Promote Children's Creativity
- KICCE Childrearing Price Index and Parents' Perception of the Cost of Childrearing (IV)
- A Study on the Environment of Child-rearing and Development of Brain to Promote Children's Creativity
- The Current State and Future Plan for Child Care Support: Leave Policy and Working Time Policy

Major



- Measures to Substantiality of Childcare Support for Improving Fertility and Work-Family Balance (VI) Analysis of locally tailored childcare support policies
- Suggesting policy improvements to enhance career happiness of preschool and daycare teachers
- Autonomy and diversity policy plan in curriculum planning and mplementation for improving quality of the Nuri Curriculum
- Performance Analysis of Nuri-policy
- Monitoring Quality of Teacher Implementation of the Nuri Curriculum
- Infants Education and Child-care Cost Estimate Research (IV)
- Childcare Center Cost Calculation in 2016: Considering the Types of Childcare Services
- Estimating the Standard Cost of Kindergarten Education in 2016
- Individualized Child Care Support Plans (II): Current Status of the Supporting Programs for Adopted Children and Plans for Further Improvements
- Research on Plans for Improving Children's Physical Health (I): Centered on the effects of Physical Health Promotion Program
- Development and Application of Evaluation-based CARE Consulting Model for Child Care Center Quality Monitoring
- Creating the Safe Learning-Care Environment for Children (II): Centering on child abuse
- Longitudinal Study on the Development of Korean Children (Panel Study On Korean Children II)

Occasional

- Enhancement of application for integrated evaluation of kindergarten and daycare center
- The Effective Management of After School-coure in Kindergartens.
- A Study on the Reorganization Plan for Special Occupational Education for Childcare Teachers
- A study on improving the establishment standard of Childcare center
- Study on the Management Standards for Public Childcare Centers
- A Study on the Introduction Plan of Public Type Kindergarten



- Analyzing the current status and identifying types of multicultural kindergartens
- Contents Analysis and Utilization of Parent Education Program
- The perception of young people about marriage and Countermeasures for childbirth
- A Study on the Application Cases of the Improper Solicitation and Graft Act at Kindergartens and Childcare Centers

Entrusted

- National Childcare Survey 2015
- Pilot Study on the Integrated Evaluations of Kindergartens and Childcare Centers
- Development and Support Plan of "Character Education Program for Childcare Teachers" to Create Safe Childcare Environment
- A Study on the Settlement Plan of Childcare Culture Centered on Policy Consumers
- Survey on the Daycare Installation Status at Workplaces
- Education and Evaluation of Character Education for Childcare Teachers (Development of Character Education Program and Character Assessment Items for Childcare Teachers)
- Evaluation Project of Education Institutions
- A Study on Childcare Teacher Training Curriculum and Child Care Practicum Manual
- Analysis and Improvement Plan for Accommodation of Young Children
- A Study on the Establishment of Customized Support System for Vulnerable and Crisis Defector Families
- Analysis and Evaluation of Effectiveness of Diapers and Dietary Supplements for Low Income Families
- A Study on the Appropriateness of Financial Support for ECEC

Ministry of Health and Welfare
Daegu Metropolitan Office of Education
National Research Council for Economics, Humanities and Social Sciences (cooperation)
National Research Council for Economics, Humanities and Social Sciences (cooperation)
Ministry of Health and Welfare
Ministry of Health and Welfare

Ministry of Health and Welfare
Ministry of Health and Welfare
The Board of Audit and Inspection of Korea
North Korea Seceder Support Foundation
Ministry of Health and Welfare
National Research Council for Economics, Humanities and Social Sciences + International Competence R&D reserve
Ministry of Education

Columbia University

National Research Council for Economics, Humanities and Social Sciences (cooperation)
Sejong Metropolitan Autonomous City
Ministry of Gender Equality & Family
Korean Women'S Development Institute
National Information Society Agency

Daegu Metropolitan Office of Education
Life Insurance Social Contribution Committee
Ministry of Education
Ministry of Health and Welfare
Ministry of Health and Welfare
Kwang-ju Metropolitan City office of Education
Ministry of Education

Ministry of Health and Welfare
Ministry of Health and Welfare
Hwasung City Support Center for Childcare
Ministry of Health and Welfare
Shinsegae
Korea Food for the Hungry International



RESEARCH PLANS IN 2017

12

KICCE develops effective polices and carries out researches in a preemptive manner to handle important ECEC issues, and to suggest a new vision in ECEC.

Studies on the ECEC Policy Support and Monitoring

- Mid and Long Term Development Plan for Early Childhood Education 2018 ~ 2022
- Mid and Long Term Development Plan of Child Care Policies 2018 ~ 2022
- A study on legal basis for guaranteeing children's rights
- The Assessment of Nuri Policy and Future Challenges
- KICCE Poll for Creating Happy Childcare Culture (I)

Studies of the National Curriculum on ECEC to Improve the Child Support Services

- Supporting Teachers for improvement of infant class management
- A Study on Assistant Staff Policy in Kindergarten and Childcare center
- ECEC Staff Survey and Support Policies for the Enhancement of Nuri Curriculum Effectiveness
- Research on the Revision of Nuri Curriculum for 3 to 5 years old
- Development and application of evaluation-based CARE consulting model for child care center quality monitoring (II)

Studies on the Child Support Policy for Vulnerable Groups

- Individualized Child Care Support Plans (III) : Current Status of the Supporting Programs for Single-Parent Families and Plans for Further Improvements

Studies on the Future Manpower Development

- A Study on the Current Status and Improvement of Private Education for Young Children (III) : Focusing on International Comparison
- Plans to create a community environment for promoting children's right to play
- A Study on School Environment for Promoting Children's Creativity
- A research on making plans for child health improvement (II) : diffusion of child health improvement plans
- Plans to Further Safe Children Education Envrinment (III) : Current Status and Improvement Plan of Health and Hygiene Management in Kindergartens and Childcare Centers

Studies on Child and Parent Support to Increase the Fertility Rate

- A Study on Parent Education Participation and Improvement Measures
- A study of support system for parents of elementary school children
- Life cycle conformity assessment of policy response to low fertility: focusing on childcare

Studies of ECEC Data Analysis

- KICCE Childrearing Price Index (V)
- A study on creating Korean young children's growth and development cohort and validation
- Development of Parenting Environment Index for Infants: Focusing on the Family of One-year Olds
- Infants Education and Child-care cost Estimate Research (V)
- The Standard Cost of ChildCare Center and Kindergarten Calculation (V)
- 2017 Longitudinal Study on the Development of Korean Children (Panel Study on Korean Children II)

13



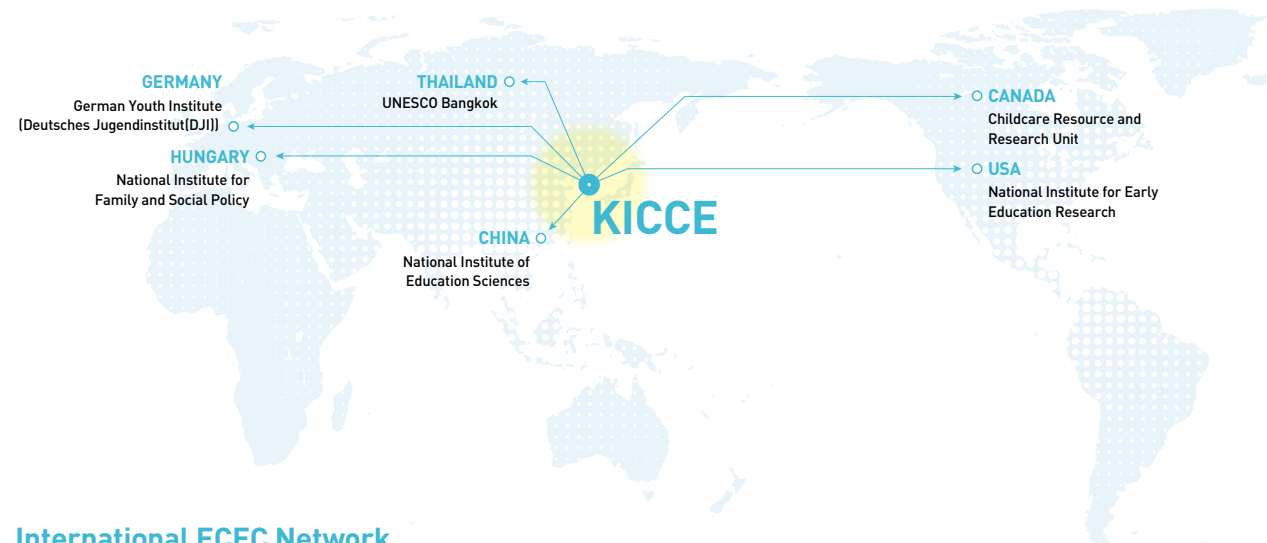
KICCE NETWORK

14

International and domestic cooperative organizations KICCE is an international research institute specialized in ECEC policy. It analyzes major agenda in ECEC and children support, and carries out various cooperation projects in cooperation with both domestic and foreign experts.

MOU with Foreign Institutions

KICCE, as a sole institute for ECEC policies in Korea, has signed MOU with international organizations for cooperation on policy research and relevant information.



International ECEC Network

KICCE actively participates in international academic activities and projects through our strong networks with other governmental and private organizations.

- **International Organizations**(OECD, UNESCO, UNICEF, World Bank, EU etc.)
- **Policy Research Institutes**(USA National Institute for Early Education Research, National Aeronautics and Space Administration, Canada Childcare Resource and Research Unit, Germany State Institute of Early Childhood Research, Deutsches Jugendinstitut(DJI), Hungary National Institute for Family and Social Policy, Singapore National Institute of Education, Early Childhood Development Agency, China National Institute of Education Sciences)
- **Information Centers**(USA Education Resources Information Center for Early Childhood Education, National Child Care Information Center)
- **Organizations for ECEC**(Australia National Childcare Accreditation Council)
- **Academic Association**(Asia-Pacific Regional Network for Early Childhood, Pacific Early Childhood Education Research Association, European Early Childhood Education Research Association, Organisation Mon diale Pour L'Education Prescolaire, The Korean-American Early Childhood Education Researchers Association)

RESEARCH AREAS

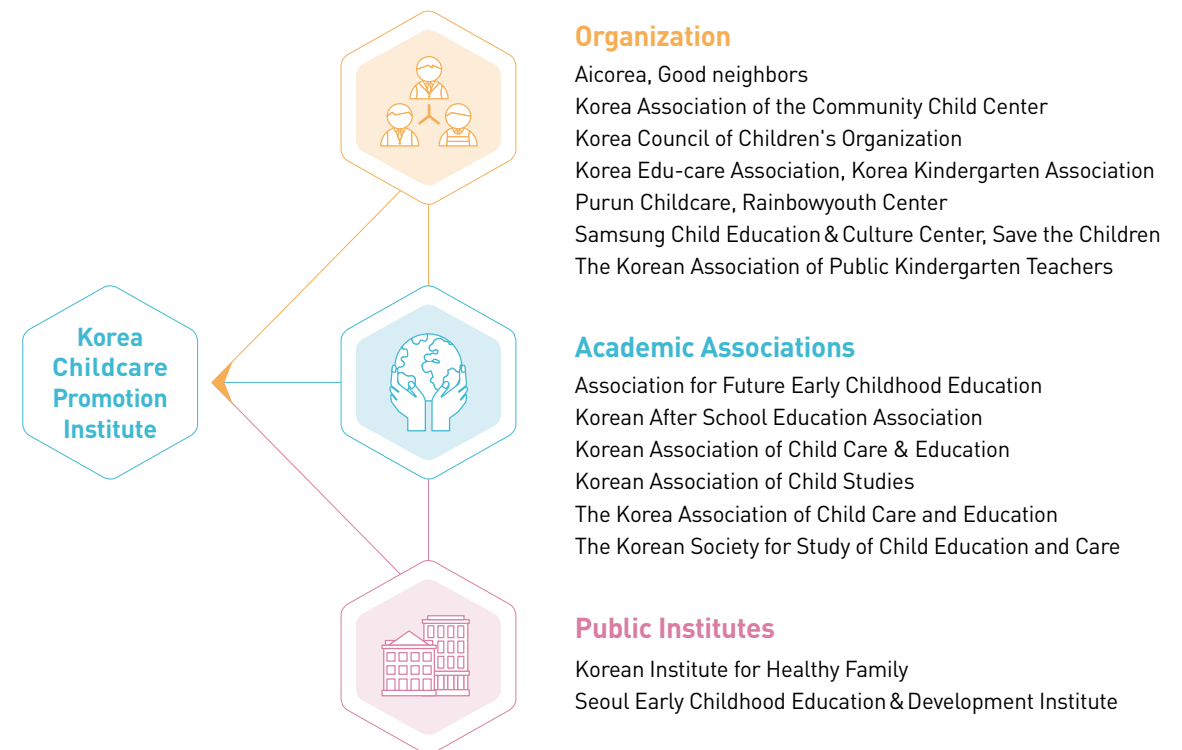
15

MOU with Domestic Institutions

KICCE has currently concluded MOU with Duksung Women's University, Sookmyung Women's University, Baejae University, Baekseok Culture University, Woosong University, Hannam University, Hyejeon College, Hyecheon College, and Hoseo University, University of Ulsan College of Medicine, Seoul Community rehabilitation Center to make strong cooperation with experts to draw up a practical policy alternative.

Advanced Child Care Support Network

As part of our network activities in policy research, KICCE established Advanced Child Care Support Network through which KICCE attempts to build a flexible support system of active exchanges and to share the best knowledge and information.



KICCE-Network of Early Childhood Education & Development Institutes

KICCE-Network of Early Childhood Education & Development Institutes organizes cooperative projects and leads to the support for Nuri curriculum and the grand development. KICCE contributes to efficient, feasible and effective ECEC policy through the help of close cooperation in a national scale.

PUBLICATIONS

To release and share the political research on ECEC, various forms of publications are being published.



Research Report

It offers research results to support ECEC policy making. 67 kinds of reports are published in 2016, having piled up 520 research reports and source books since 2005.



Issue Paper

It presents analyses and counter-plans for the rising issues on ECEC.



The Korean Journal of Child Care and Education Policy

As an approved journal of National Research Foundation of Korea, it has been published semi-annually. It, as an academic journal for experts, deals with political issues and tasks targeting on preschool children.



International Journal of Child Care and Education Policy

International Journal of Child Care and Education Policy is an International journal published by KICCE and National Institute for Early Education Research(NIEER) of Rutgers University, New Jersey, USA. The journal covers early childhood education and child care policy while being published in electronic form through the official website(SpringerOpen).



KICCE Policy Forum on ECEC

It contains two major categories. One is 'focus' which analyzes political tasks on childcare and the other is 'trend' which deals with child care policy trend.



Early Childhood Education and Care Policies Brief

As to current ECEC issues, practical and political guides are offered in a prompt manner. Careful consideration is put in for the ease of the public as well as the experts in a monthly basis.



International Trends of Early Childhood Education and Care Policies

It is a sourcebook to analyze up-to-date global trend in ECEC. Until now 20 books are published including Japan(I, II), Sweden(I, II), Australia(I, II), UK, USA, Canada, Finland(I, II), France, New Zealand, German, Taiwan, Norway, Ireland, Israel, Denmark and Netherlands

ONLINE SERVICES

KICCE discloses research reports and domestic /foreign policy trends via its website to share and deliver significant information.

Websites of KICCE

- Home page <http://www.kicce.re.kr/eng>
- Mobile Web <http://www.kicce.re.kr/mobile>

KICCE offers open access to research reports and publications. Up-to-date information and trend analysis on ECEC policies are also provided.

- Blog <http://blog.naver.com/kicce1st>
- Twitter <https://twitter.com/KICCE2>
- Facebook <http://www.facebook.com/KICCE1>

KICCE news and ECEC policy trends are promptly provided to the subscribers.



Family Sites



- i - POL <http://ipol.kicce.re.kr>

i-POL Project aims to collect public opinions and reflect them back to the policies. Every citizen is welcomed to visit I-POL homepage and suggest opinions freely.



- Panel Study on Korean Children <http://panel.kicce.re.kr>

Panel Study on Korean Children, as a longitudinal study, aims for investigating early childhood and its the surrounding environment by tracking a growth process from the birth and examining developmental needs from each growth stage, mental characteristics of parents, the current status of child-rearing, and the work of child-rearing support agencies accordingly. Panel data are provided via open access.



- Korean Journal of Child Care and Education Policy <https://kicce.jams.or.kr>

As an approved journal of National Research Foundation of Korea, it has been published semi-annually. Paper Contribution and Journal subscription are available on the official website.



- International Journal of Child Care and Education Policy <http://ijceps.springeropen.com>

International Journal of Child Care and Education Policy is an international journal published by KICCE and National Institute for Early Education Research(NIEER) of Rutgers University. Paper Contribution and Journal subscription are available on the official website.



KICCE devotes every effort to develop and improve childcare and education policy in Korea in a dream of happiness and togetherness of children, their families, and whole nation.