

The logo for KICCE features the letters 'KICCE' in a bold, sans-serif font. The 'I' is replaced by a stylized orange 'C' shape with a small green dot at its top right end. The background consists of a dark blue horizontal band at the top and a large, light blue circular graphic element that overlaps the bottom of the blue band and extends into the white area below.

KICCE

Korea Institute of Child Care and Education

KOREA INSTITUTE OF CHILD CARE AND EDUCATION

KICCE *will Lead the Way toward the Advanced Nation
In Early Childhood Education and Care.*



Message from the President

Greetings!

The Korea Institute of Child Care and Education(KICCE) is a research institute related to policy of early childhood education and care in Korea.

So far, the research on policy of early childhood education and care has been performed by Korean Educational Development Institute(KEDI), Korean Women's Development Institute(KWDI) and Korea Institute for Health and Social Affairs(KIHASA) separately.

In order to make a systematic and integrated approach to research on policy and support on early childhood education and care more efficiently, KICCE was established in December 2005 under the National Research Council for Economics, Humanities and Social Sciences.

Major roles of KICCE are research on child care policy, development of early childhood programs and teaching materials, assessment of preschools and child care centers, qualification and training programs for professionals working with young children, domestic and overseas information exchange related to policy on early childhood education and care, and joint research with international institutes.

Your keen interest and support will help us to lay the foundation for developing policies suitable for the future human resources in Korea.

January, 2006

Rhee, Ock

President

Korea Institute of Child Care and Education

KICCE will Play a Pivotal Role for **Enhancing Child Care and Education in the 21st Century**

KICCE will lead the way for realizing an advanced society in child care and education in the 21st century.

KICCE was established to perform a comprehensive and systematic research on policy of early childhood education and care in order to develop human resources.

KICCE will contribute to transforming Korea into an advanced nation regarding early childhood education and care by suggesting rational policies.

Major Roles of KICCE

- Research on policy of early childhood education and care
- Development of child care and education programs and teaching materials
- Assessment and consultation with child care and education institutes
- Qualification management and training of child care workforce
- Sharing and management of domestic and overseas information and data on policy of early childhood education and care
- Joint research and exchange among overseas institutes on policy of early childhood education and care
- Supporting other research on policy of early childhood education and care

Global Research Institute on Policy of Early Childhood Education and Care



Vision

Global Research Institute on Policy of Early Childhood Education and Care

Mission

- Support for establishing policy on early childhood education and care to develop national human resources
- Production and distribution of information and resources on policy of early childhood education and care
- Support for streamlining the execution of policy on early childhood education and care
- Monitoring and assessment of policy on early childhood education and care

Management Goals

To secure efficiency in research

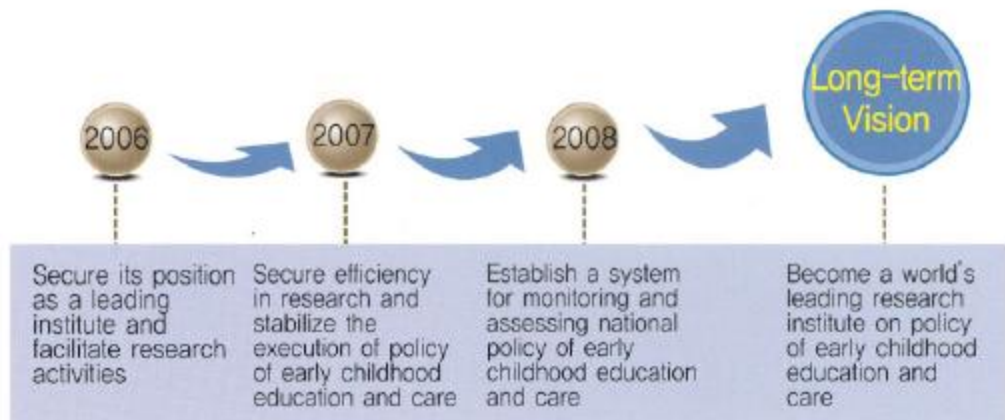
To enhance customers' satisfaction

To secure its position as a research institute on national policy

To facilitate cooperation and exchanges with domestic and overseas institutes

To improve the efficiency of management

Yearly Development Objectives

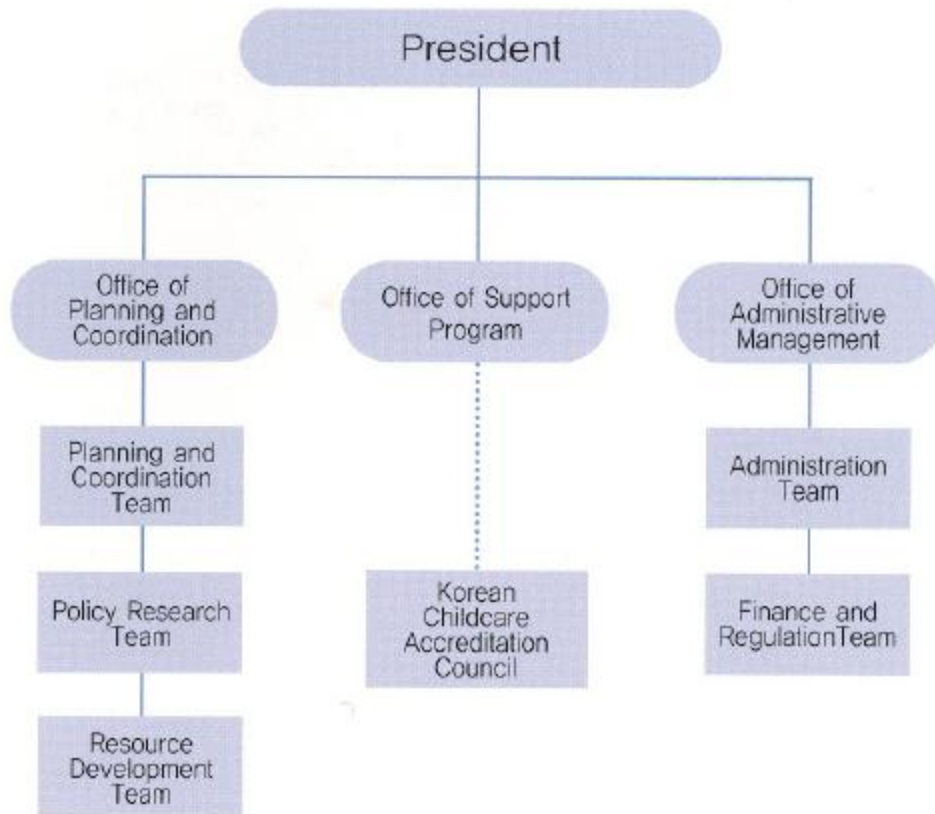


Management Goals

Leading research institute on national policy	<ul style="list-style-type: none"> • Secure its position as a government-funded institute • Create the best results of research on policy of early childhood education and care • Support planning and executing child care and education policies
Efficiency of research	<ul style="list-style-type: none"> • Establish a system for efficient research and management • Strengthen quality management for research results • Maintain a highly-skilled research workforce
Customers' satisfaction	<ul style="list-style-type: none"> • Build a customer-oriented research structure • Offer domestic and overseas research trends and policies on early childhood education and care • Facilitate the promotion of research activities
Cooperation and exchange with other institutes	<ul style="list-style-type: none"> • Build cooperative relationships with other domestic research institutes • Build cooperative relationships with international organizations and research institutes
Efficiency of management	<ul style="list-style-type: none"> • Build an innovative management system • Secure the transparency of management and the efficiency of organization • Rationalize the execution of budget and expand financial resources



Organizational Chart



Research Projects in 2006

A study on cooperation and integration of early childhood education and child care to enhance the efficiency of policy on early childhood education and care

When separate policies are planned for early childhood education and child care, there may be a lack of efficiency in executing them. The study aims at suggesting measures to harmonize and integrate policies of early childhood education and care, thereby developing a process model. To do this, KICCE will examine current policies and integration examples in other countries and hear from experts.

A study on enhancing the publicity of programs for young children

The study aims at finding measures to enhance the publicity of programs for young children by exploring the meaning of publicity and examining the current status of publicity in policy and practices of programs for young children.

A study on the prospects of the child care and education workforce and enhancement of professionalism

In order to secure a more professional workforce, the study considers current issues related to supply and demand for the child care and education workforce, and estimates an adequate number of teachers for young children. Ways to improve their professionalism are suggested in terms of training, qualification, and regulations for professionals working with children.

A study on adequate share of child care and education expenses to eradicate social gap

The study analyzes the current status of nursery facility usage by income groups, region and type of institute. Based on the analysis, KICCE will suggest the adequate amount of expenses shared by parents, governments(central and local), etc. This will improve financial support and remove social differences among groups.

Analysis of the status of child care and education in 2004

In 2004, a national survey was carried out nationwide about households, preschools, and child care centers. With the survey performed in 2004, KICCE will examine the status, requirements and determining factors as well as categorize the current status and property of preschools and child care centers.

Development of a model for the panel survey of Korean children

This longitudinal study on children from birth to school age examines children's status and needs by each developmental stage and parenting issues, and analyzes the functions and benefits of child care and education institutes. The goal for 2006 is to develop a model for the panel survey of Korean children, which will be performed in the following years.

Production and Exchange of Policy and Information on Child Care and Education

Collection and analysis of research trends and policies

- To gather and manage written and electronic documents on policy of early childhood education and care, and provide a knowledge-based environment so that users can utilize appropriate information.
- To publicize a book on analysis of international policy on early childhood education and care and research trends.

Joint research and exchanges with international institutes

- To serve as the head institute in Korea by networking international institutes on policy of early childhood education and care.

Academic affairs and publication of journals

- To hold a weekly research workshop on policy of early childhood education and care.
- To hold the KICCE policy of early childhood education and care forum to discuss major policies and current issues.
- To hold regular meetings to develop mid- and long-term child care and education policies.

Distribution of research achievements and sharing of information

- To produce and distribute promotional documents on research and results to government offices, related institutes and the workforce in order to share research achievements and information.





Child Rearing is One of the Greatest Production in Our Society.

Good Early Childhood Education and Care Makes Miracles.

The Nation should Support this Miracle-Making Project.



Korea Institute of Child Care and Education

www.kicce.re.kr

Ankuk building 11F, 175-87 Anguk-Dong, Jongno-Ku, Seoul 110-734, Korea

Tel. 82-2-730-7070 Fax. 82-2-730-3313