

Childhood Care and Education is the Greatest Product in Our Society.
Only through Quality Early Childhood Care and Education, Can Children Make Miracles.
The Nation should Support this Miracle-Making Project.



KICCE

Korea Institute of
Child Care and Education



KICCE will Lead the Nation in the Advancement
of Early Childhood Care and Education.

Message from the President

Welcome!

The Korea Institute of Child Care and Education (KICCE) is a national research institute for early childhood education and care policy.

National policy research on early childhood care and education has long been conducted separately by the Korea Educational Development Institute (KEDI), Korea Women's Development Institute (KWDI), and the Korea Institute for Health and Social Affairs (KIHASA). In order to integrate a systematic approach to research policy, as well as to more efficiently support early childhood education and care services, KICCE was established in December 2005 under the National Research Council for Economics, Humanities and Social Sciences.

The major roles of KICCE include conducting research on childhood care and educational policies, developing early childhood programs and teaching materials, developing training programs for professionals working with young children, accrediting childcare centers, exchanging relevant information both domestically and overseas, coordinating joint international research, and more.

Your keen interest and unceasing support will help us to lay a foundation for developing policies for the best interests of young children in Korea. I earnestly expect and appreciate your ongoing support for our institute.

*Sincerely,
Rhee, Ock*

President
Korea Institute of Child Care and Education
January, 2006



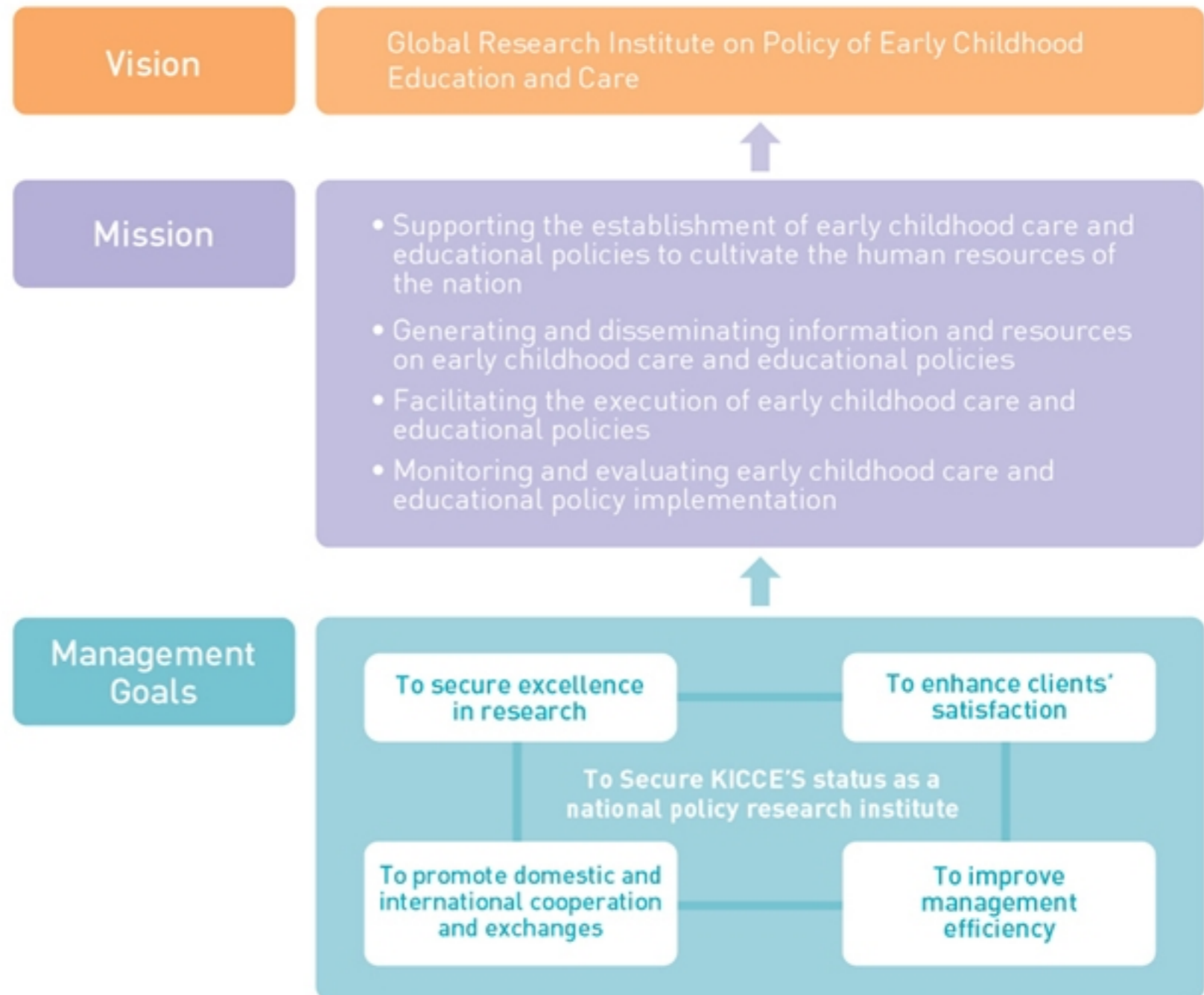
KICCE will play a pivotal role in enhancing early childhood care and education in the 21st Century.

Major Roles of **KICCE**

- Conducting research on the policies of early childhood care and education
- Developing early childhood care and educational programs and teaching materials
- Evaluating and supervising early childhood care and educational institutions
- Qualifying and training teachers in early childhood care and education
- Generating databases for the dissemination of information on early childhood care and educational policies in and out of Korea
- Encouraging international joint researches and exchanges with overseas institutes on early childhood care and educational policy
- Assisting major policy projects on early childhood care and education



Global Research Institute on Early Childhood Care and Educational Policy



Management Goals

Establishing the identity of KICCE as a national policy research institute

- To secure its status as a government-funded research institute
- To integrate research on early childhood care and educational policies
- To support the planning and implementation of early childhood care and educational policies

Securing excellence in research

- To establish an efficient research management system
- To strengthen research quality management
- To secure competent research workforces

Meeting and satisfying clients' needs

- To build a research system to meet clients' needs
- To provide information on domestic and overseas policy research trends in early childhood care and education
- To promote research activities and projects

Domestic & international cooperation and exchanges

- To build cooperative relationships with other domestic research institutes
- To create networks with international organizations and research institutes

Evaluating management efficiency

- To establish an innovative management system
- To ensure the transparency of management and the efficiency of organizations
- To evaluate budget execution and to expand financial resources

KICCE's Yearly Objectives

2006



2007



2008



Long-term Vision

Establishing the status of KICCE as a leading research institute and facilitating research activities

Securing efficiency in conducting research and stable implementation of early childhood care and educational policy

Establishing a monitoring and evaluation system for national policies on early childhood care and education

Becoming a world leading research institute in early childhood care and educational policy

K

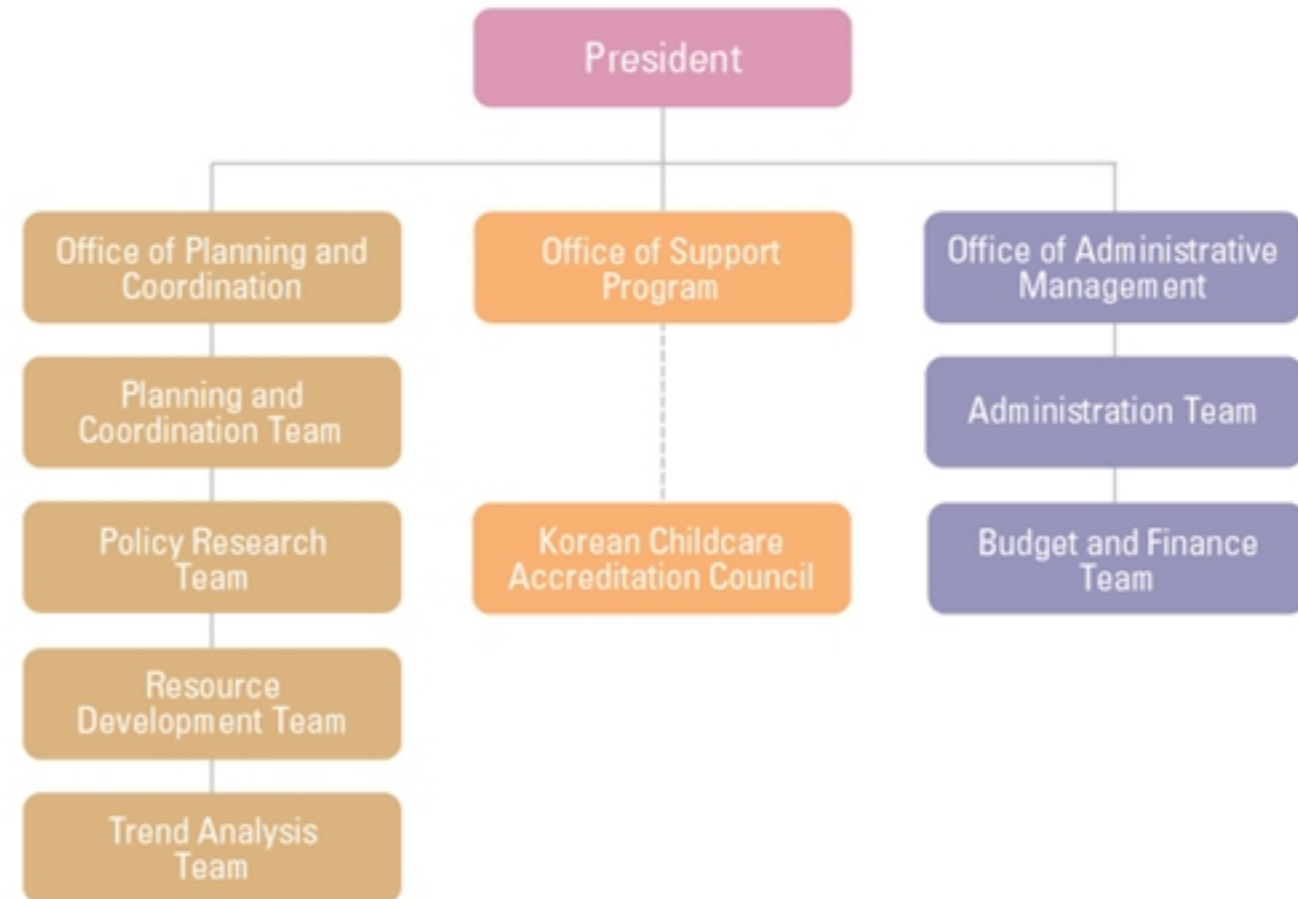
I

C

C

E

Organizational Chart



Research Projects in 2006

Integrating early childhood care and educational policies for the efficient service of young children

Separate policies on early childhood care and education have lacked efficiency in their execution. This study aims to suggest strategies and develop process models to harmonize and integrate early childhood care and educational policies. In order to achieve these purposes, current policy issues and examples of integration in other countries are explicated, and an in-depth discussion with experts in the field is undertaken.

Enhancing the public transparency early childhood care and education

The purpose of the study is to develop strategies for improving the public transparency of early childhood care and education in the light of services, infrastructures, finance and administration. The meaning of 'public transparency' is

defined and the current status of transparency in early childhood care and educational policies and practices is examined.

Prospects for staffing and enhancement of professionalism

In order to secure quality teachers, this study intends to identify current issues related to the supply and demand of childhood care and education workforces and to estimate adequate numbers of teachers. Methods of improving teachers' professionalism are suggested in terms of pre-service training, qualification, and promotion regulation.

Adequate share of childhood care and educational expenses to reduce social gap

This study examines the current status of childhood care and educational enrollment by family income level, region, and type of institution. Based on the examination, adequate levels of expense share by parents, central and local governments, and others are presented respectively in order to improve financial support and to reduce social gaps.

In-depth analysis of the current status of childhood care and education in Korea

In 2004, a survey of households, kindergartens, and childcare centers was carried out nationwide by the Ministry of Gender Equality and Family. By analyzing the 2004 survey data, this study examines the status of enrollment, the needs of stakeholders, and factors determining parental choices. This study also provides the current status and profiles of kindergartens and childcare centers.

Development of a panel survey model of Korean children

The purposes of this longitudinal study are two-fold. First, to investigate the developmental processes of Korean children from birth to the time before formal schooling; and second, to collect and analyze the features and difficulties of parent's child-rearing according to developmental phases and to determine the effects of childhood care and education on their children's development. Since the study will be continued over several years, the ultimate goal of the study in 2006 is to develop a model for the panel survey which will serve as a framework for the future.

Generation and Exchange of Information on Early Childhood Care and Educational Policies

Collecting and analyzing information on research trends and policies on childhood care and education

- Gathering and managing hand-written and electronic documents on early childhood care and educational policies in order to provide users with a knowledge-based environment
- Publishing periodicals on the trend analysis of international policies and research on early childhood care and education

International joint research and exchanges

- Serving as the head institute in Korea through international networking on early childhood care and education

Academic activities and journal publication

- Holding weekly internal workshops on the KICCE research projects for each year
- Hosting a KICCE forum to discuss current issues and major policies on early childhood care and education
- Holding meetings on a regular basis to develop mid- and long-term childhood care and educational policies

Disseminating research findings and the KICCE achievements

- Producing and distributing promotional documents on research and results to government offices, related institutes and the workforce in order to share research achievements and information





Korea Institute of Child Care and Education

The BI (Brand Identity) depicts a 'family community', consisting of the 'mother' and the 'child', and symbolizes the identity and mission of KICCE in the pursuit of quality childhood care and education for all children. The soft colors used in the BI represent that 'childhood care and educational policy and practice are highly important to the caring of children.'

“Early Childhood Care and Education is the Greatest Product in Our Society.
Only through Quality Early Childhood Care and Education, Can Children Make Miracles.
The Nation should Support this Miracle-Making Project.”

Korea Institute of
Child Care and
Education

KICCE

Korea Institute of Child Care and Education

Ankuk building 11F, 175-87 Ankuk-Dong,
Jongno-Ku, Seoul 110-734, Korea
Phone_ 82-2-730-7070 Fax_ 82-2-730-3313

www.kicce.re.kr

