

KICCE plays a pivotal role in enhancing early
childhood education and care in Korea.

A Message from the President

KICCE conducts research into childcare and education policies, develops early childhood programs and teaching materials and examines workforces in kindergarten and childcare centers. It also covers parent education and child-rearing support research as well as panel studies on Korean children. In addition, KICCE's other roles include exchanging information and coordinating joint research, and other related activities with counterpart organizations both domestically and internationally.

All of these activities which KICCE is involved with are part of our efforts to ensure that all children can develop in a healthy manner and families are supported in a child-rearing-friendly environment.

I greatly appreciate your keen interest and unceasing support which will help us to build strong foundations for cultivating the future human resources.

Bokhee Cho

President
Korea Institute of Child Care and Education

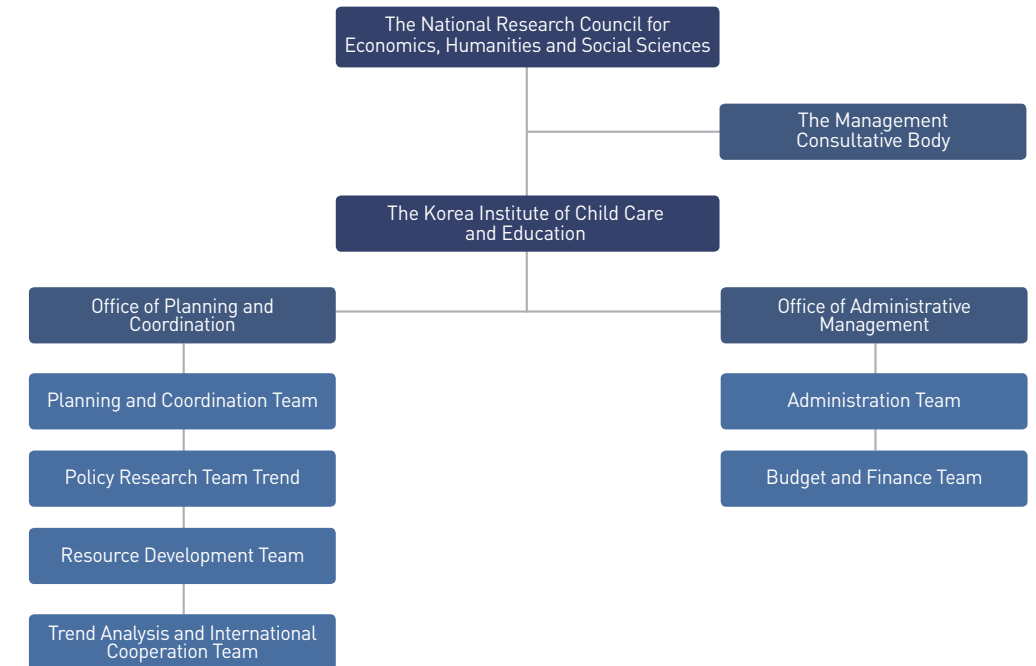
A Brief History

Aug. 17, 2005	At the State Affairs Policy Negotiation Meeting (the 118 th meeting presided over by the Prime Minister) first decided to establish the Korea Institute of Child Care and Education
Sep. 29, 2005	The revised articles of association of the three relevant research institutes led to the establishment of the Korea Institute of Child Care and Education (jointly affiliation with the Korea Educational Development Institute, the Korea Institute for Health and Social Affairs and the Korea Women Development Institute)
Sep. 30, 2005	A MOU was signed, establishing and setting out parameters for the management of the Korea Institute of Child Care and Education.
Nov. 9, 2005	Dr. Ok Lee was inaugurated as the first president.
Dec. 26, 2005	The holding of the opening ceremony
Dec. 28, 2005	The <i>Childcare Accreditation Office</i> was first commissioned by the Ministry of Health and Welfare.

Dec. 28, 2006	The <i>Childcare Teacher Certificate Management Office</i> (CTCM) was first commissioned by the Ministry of Health and Welfare.
Sep. 5, 2008	Sister institutes were amalgamated into two organizations; the Korea Education Development Institute, the Korea Institute for Health and Social Affairs. This was done due to re-organization conducted by the government.
Oct. 31, 2008	Dr. Bokhee Cho was inaugurated as the second president
Dec. 30, 2009	The commissioning of the <i>Childcare Accreditation Office and the Childcare Teacher Certificate Management Office</i> of Ministry of Health and Welfare was completed.
Jan. 1, 2010	Our institute changed its Korean title.
Jan. 26, 2010	A <i>Support Team for Early Childhood Education Advancement</i> was commissioned by Ministry of Education, Science and Technology.
Dec. 6, 2010	Our institute celebrated its 5-year anniversary

KICCE Organizational Chart

Organizational Chart



KICCE Mission & Vision

Mission

- Facilitating the implementation of early childhood care and education policies
- Serving as a data bank for early childhood care and education policies
- Supporting the establishment of early childhood care and education policies to cultivate future professionals in this field
- Monitoring and evaluating early childhood care and education policy implementation

Vision

- Global Research Institute on Child Care and Education Policies
- Think Tank of Developing Child Care and Education Policies

Management Goals

Four Management Goals

To conduct customer-centered policy research

- Conducting research to develop coping strategies for possible and impending social change
- Maximizing customer satisfaction
- Sharing and disseminating research findings

To strengthen research capabilities and to enhance the quality of our research

- Enhancing the management of our research output
- Undertaking collaborative research with other industrial-educational-research institutions
- Fostering greater professionalism and the development of research capabilities

To establish ourselves as a hub for research on early childhood care and education policy

- Maximizing utilization of knowledge and information on child care and education policies
- Strengthening international networks and cooperation

To establish and efficient administration and management infrastructure

- Enhancing our status as a national research institute
- Enhancing our efficiency in the management of human resources
- Establishing and formalizing and outcome-based management and incentive system

Major Research Areas

KICCE is attempting to contribute to the advancement of the nation by developing effective policy measures on early childhood education and care.

The Major Roles of KICCE

- Conducting research on early childhood education and care policies
- Conducting research on child-rearing support policies
- Conducting research on the evaluation of kindergartens and childcare centers
- Conducting research on workforces in early childhood education and care
- Developing childcare and educational programs and teaching materials
- Assisting the government with major policy projects related to childcare and education
- Generating a database and disseminating information on early childhood education and care policies
- Coordinating international joint research activities and exchanges with overseas institutes on early childhood education and care policies

KICCE strives to become a world-class research institute specializing in child care and education policy

Research Projects in 2011

Research into cooperation and integration between early childhood education and care

- Short to mid-term strategies to integrate ECEC workforces
- Short to mid-term strategies to integrate the kindergarten curriculum and the standard childcare curriculum
- Short to mid-term strategies to integrate administrative/financial system of ECEC
- Pilot research (III) on collaborative models of early childhood education and care

Research into the enhancement of quality in ECEC services (sep. in kindergarten and childcare curricular)

- The common curriculum for 5-year-old children
- A study into how to improve workforce management for quality ECEC services
- A recommended system for extracurricular activity programs for full-day kindergartens
- Running a cooperative network to improve curriculum implementation
- The current practices of the human rights of children in early childhood settings and measures for improvement
- The development of evaluation criteria for kindergartens

Research into teachers in kindergartens and day care centers

- Establishing a system to provide in-service training to childcare teachers
- Measures to improve salary systems of childcare teachers
- Clarifying the concepts and regulations for the establishment and management of childcare centers.

Research into developing human resources for the future

- The current status of and needs for child-rearing support among multicultural families
- The developmental status of children in multicultural families and measures to provide customized support services
- Implementing and monitoring a pilot dual-language program for parents and children in multicultural families
- The values and the current status of child-rearing among ethnic Korean living overseas: Focusing on Vietnam and Uzbekistan
- A comparative study on child-rearing practices in South and North Korea; Preparations for future re-unification
- The current status and the underpinning values of child-rearing in China

Research into child-rearing support and parent support in the context of a low birth rate society

- Measures to improve child-rearing support to increase birth rates and promote work-life balance
- Improving customized parent education
- Integrated child-rearing support for disadvantaged children(III)

KICCE's Research in 2011



A longitudinal study into early childhood: 'The Panel Study on Korean Children'

'The Panel Study on Korean Children' is a longitudinal study on infants, conducted at the national level, which collects and analyzes data on the child development process and child-rearing environment on young children in Korea from birth.

- **Subjects:** More than 2,000 Korean infants born between April and July in 2008
- **Duration:** 2008 – 2020 (Ages covered; 0–7, 9, 12)

2008	2009	2010	2011
Secured 2,562 families as a preliminary subjects in hospitals	General research into 1,904 families in the 2nd year	General research into 1,802 subject in the 3 rd year	General research in the 4 th year: aim to examine 1,705 subjects
General research into 2,078 families in the 1 st year	1 st in-depth research exercise	Additional research into 1,000 families with infants born in 2010	Survey with kindergarten and childcare teachers as well as teaching staff at Hakwons which operate more than a half-day Home visit survey: REVT, EC-HOME

Expected outcomes

- To provide cross-sectional / longitudinal data on the development and life cycles of children from birth to their pre-school years
- To identify desirable child-rearing measures and effective child-rearing support methods by examining the specific characteristics of childcare, family environment and child-rearing support
- To examine the perceptions of the panel families towards child-rearing support policies and to identify their demands
- To promote and facilitate research by providing collected data



Supporting the governmental policies

KICCE is conducting policy research in close coordination with relevant government bodies including the Ministry of Education, Science and Technology and the Ministry of Health and Welfare.

Measures to support the government to initiate the *Common Curriculum for All 5-year-old Children*

- To run a task force for the Common Curriculum for All 5-year-old Children
- To develop the Common Curriculum for All 5-year-old Children incorporating the standard childcare curriculum and national kindergarten curriculum, and collecting opinions from various stakeholders

Support for *The Plan for the Advancement of Early Childhood Education*

- To establish and manage a “Early Childhood Education Advancement Support Task Force” since December, 2009
- To conduct research on 15 tasks in 2010 and 7 tasks in 2011, including those supporting the policy agenda, developing data, managing statistical data and information, and promoting the public awareness of early childhood education

Support policies to improve a more user-oriented childcare system

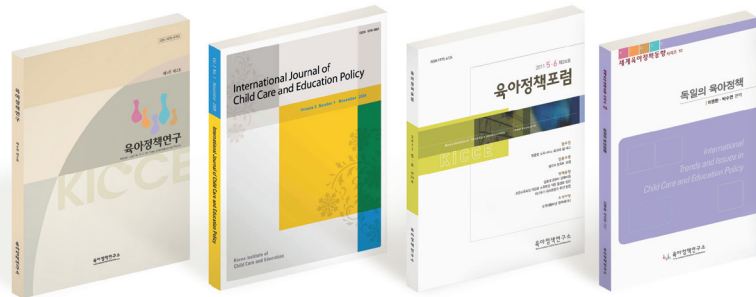
- To develop measures to run a pilot program for public childcare centers and conduct evaluation of the above
- To support the revision of a cost system for different usage hours at childcare centers: Improving in-service training and the salary system for childcare teachers
- To develop a revised standard childcare curriculum

Generation and Exchange of Information on Early Childhood Care and Education Policies

Academic activities and publications

Issue academic papers and hold policy seminars

- *The Korean Journal of Child Care and Education Policy*, published semi-annually
- *The Child Care and Education Policy Forum*, published bi-monthly
- *The International Journal of Child Care and Education Policy*, published semi-annually
- Holding policy seminars
 - Holding The 'Child-rearing Advancement Forum' bi-annually
 - Holding The 'ECEC policy forum monthly'
 - Holding the KICCE policy seminar on numerous occasions throughout the year
- Holding bi-weekly internal workshops on Wednesday to enhance the quality of research
- Holding bi-weekly seminars on Friday by inviting external experts to share knowledge and information



KICCE participates actively in academic activities and knowledge sharing in order to develop and exchange the most up to date policies and theories on early childhood care and education

Providing up-to-date information on ECEC policies

- Building a database on early childhood education and care policies
- Analyzing up-to-date global data on early childhood education and care
- Collecting policy information by utilizing Korean informants living overseas
- Issuing the publication *International Trends of Early Childhood Education and Care Policies*
- Issuing the monthly e-newsletter, *Early Childhood Education and Care Policy Information*
- Issuing the publication *Child-rearing Knowledge Series*

International exchanges and joint research activities

- Promoting exchanges with international organizations such as OECD and UNESCO
- Conducting UNESCO's comparative study to coordinate ECEC policies and holding international seminars
- Signing of MOUs and engaging in the conduct of joint research with counterpart overseas organizations
- Hold international conferences and publish research findings



KICCE Networks for Advanced Early Childhood Care and Education

As part of our networking activities in policy research, KICCE established *Networks for Advanced Early Childhood Education and Care* which is composed of academic associations, public institutes and organizations related to early childhood education and care.

Academic associations

- Association for Future Early Childhood Education
- Korea Open Association for Early Childhood Education
- Korea Family Welfare Association
- Korea Academy of Family Social Work
- Korean After School Educare Association
- Korean Association for Study on Child Education and Policy
- Korean Association of Child Care and Education
- The Korean Society for Study of Child Education and Care
- The Korean Society for Ecological Early Childhood Education
- The Korean Council for Children's Rights
- Korean Society of Child Welfare
- Korean Association of Child Studies
- The Korean Society for Early Childhood Teacher Education
- The Korea Association of Child Care and Education
- The Korean Association for Early Childhood Education & Care Administration
- Korean Society for Early Childhood Education
- The Korean Society for Early Childhood Education & Care

Organizations

- Good Neighbors
- Rainbow Youth Center
- Samsung Child Education & Culture Center
- Save the Children
- The Foundation Ai Corea
- The Central Office for Multicultural Family Support Centers
- The Association of the Community Center for Childcare
- Puruni Childcare
- The Korea Council of Children Organizations
- The The Korean Association of Public Kindergarten Teachers
- The Korea Edu-care Association
- The Korea Kindergarten Association

Public Institutes

- Seoul Early Childhood Education and Development Institute
- Central Healthy Family Support Centers
- Korea Childcare Promotion Institute

International Cooperation and Exchange Activities

KICCE actively participates in international academic activities and projects through our strong networks with other countries as well as international organizations, such as the OECD, UNESCO, UNICEF, and OMEP.

International Networks

- **International Organizations:** OECD(Organization for Economic Cooperation and Development), UNESCO(United Nations Educational, Scientific and Cultural Organization), UNICEF(United Nations Children's Fund)
- **Policy Research Institutes:** Exchanging MOU with Childcare Resource and Research Unit in Canada & Hungary Institute of Social Policy and Family; Centre for Early Childhood Development and Education in Ireland, Centre for Research in Pedagogy and Practice at National Institute of Education in Singapore, etc
- **Government Bodies on Childcare and Education in the Asian region**
- **Information Centers:** Education Resources Information Centre for Early Childhood Education, National Child Care Information Center in the United States
- **Organizations on Childcare and Education:** National Childcare Accreditation Council, Preschool Qualification Accreditation Committee in Singapore
- **Academic Associations:** Pacific Early Childhood Education Research Association, European Early Childhood Education Research Association, OMEP(Organization Mondiale pour Education Prescolaire / World Organization for Early Childhood Education)
- **University and College Departments specializing in the fields of Childcare and Education**

Domestic Networks for International Cooperation

- Government Bureaus and Divisions of International Cooperation
- International Cooperation Team in related National Research Institutes
- Korean Commissions for UNESCO & UNICEF
- Korea International Cooperation Agency (KOICA)

International Exchange Activities

- Presentations at international conferences and seminars
- Overseas visits to the relevant institutes, organizations, and others
- Visits of international experts to KICCE

KICCE Research Activities



The Public hearing on Revised Standard Childcare Curriculum



The 2nd ECEC Support Policy Forum



The *Young Cha Project* Workshop for public officials



The Annual Conference of the Panel Study on Korean Children



The UNESCO Policy Seminar



The policy consultation meeting with the Ministry of Health and Welfare



The launching of the *Early Childhood Education Advancement Support Task Force Team* for Ministry of Education, Science and Technology



The visit to a kindergarten for ethnic Korean children in Vietnam



The visit to the Hana Center for North Korean refugees



Developing Dual-language support program for children from multicultural families



Research on developmental status of young children from multicultural families



The visit to a kindergartens for Korean-Chinese children in Domun city, China



The "Young Cha Project":

The collaboration project
between early childhood
education and care

www.icycyc.com



i-POL

Policies and information
for young children

kicce.re.kr/ipol



The Panel Study on Korean Children

kicce.re.kr/panel



The KICCE e-Library

[lib.kicce.re.kr/
libeka_web2/index.jsp](http://lib.kicce.re.kr/libeka_web2/index.jsp)



**Korea Institute of
Child Care and Education**

110-734 7F, 10F & 11F, Anguk Bldg., Yulgok-Ro 33, Jongno-Ku, Seoul Phone: +82-2-398-7700 Fax +82-2-730-3313

www.kicce.re.kr

KICCE



www.kicce.re.kr