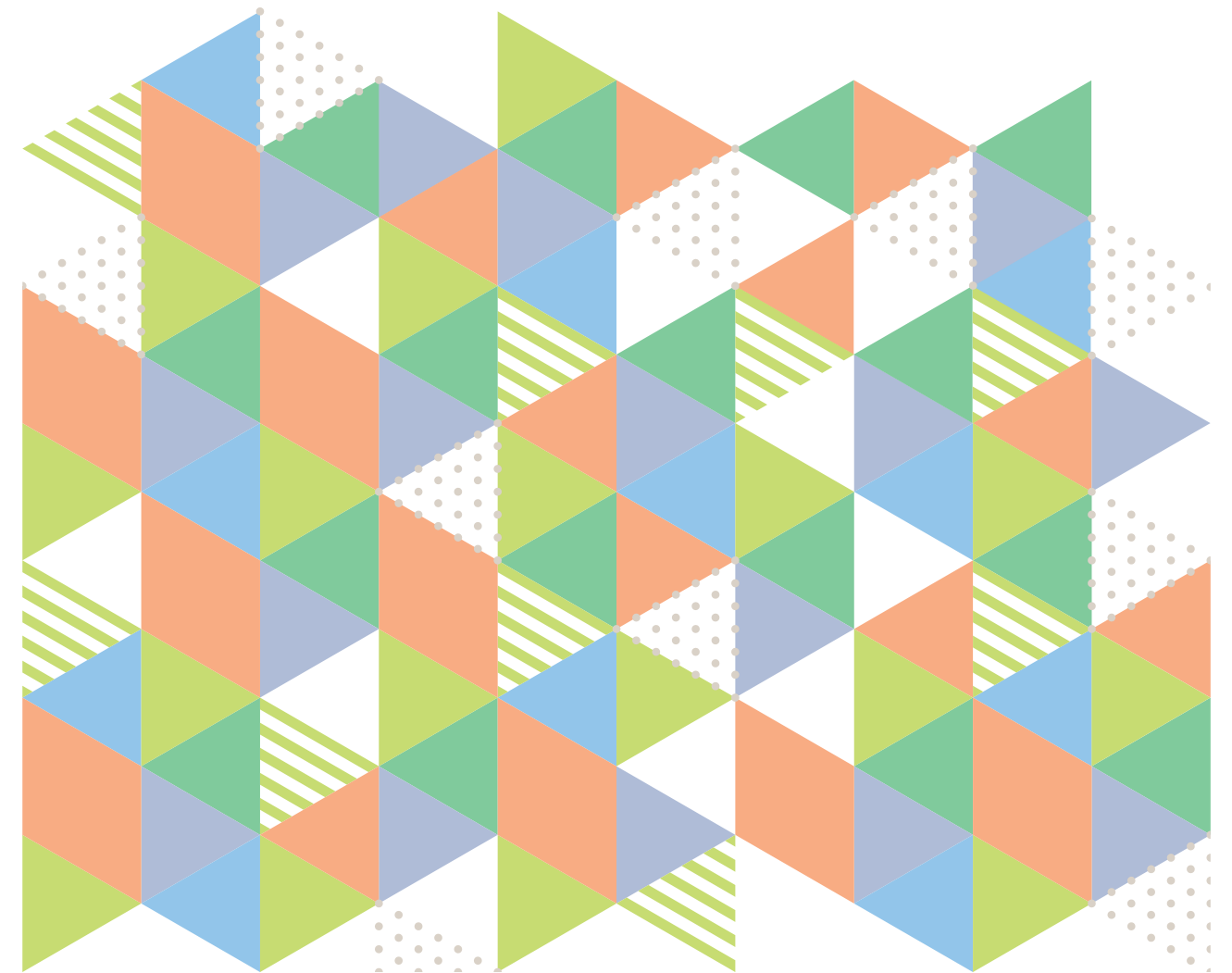


Make your dreams come true with KICCE

# KICCE

Korea Institute of Child Care and Education

Korea Institute of Child Care and Education





With hopes for a supportive and stable environment to children and happiness to their family, KICCE promotes the implementation of the future-oriented and creative policy on early childhood education and care through research, evaluation, and sharing of information.







Welcome to the Korea Institute of Child Care and Education.

The Korea Institute of Child Care and Education(KICCE) is a national research institute established under the National Research Council for Economics, Humanities and Social Sciences(NRCS) of Prime Minister's Office. It carries out integrative policy research on early childhood education and care(ECEC) and to effectively support national projects on childrearing.

In respond to new challenge of low birthrate and aging population, it is increasingly important to invest on child care supports for young children who will be the future human resources. KICCE would like to contribute to building the family-friendly society where children can grow up healthy and the families are happy with children through leading ECEC policies and programs.

The efficiency of governmental investment in ECEC is more at issue than ever before, and the need is growing for customized policies to suitably respond to the changing environment of ECEC. All children should grow up in a supportive and stable environment. With values for the implementation of the future-oriented and creative policy on ECEC and childrearing, KICCE will be leading the way in shaping a happy future that all members of our society are able to actively participate in.

We sincerely ask for your continuous interest and support in our striving to become a future-oriented national research institute that ultimately brings happiness to all children and families.

President  
Korea Institute of Child Care and Education

**Namhee WOO**

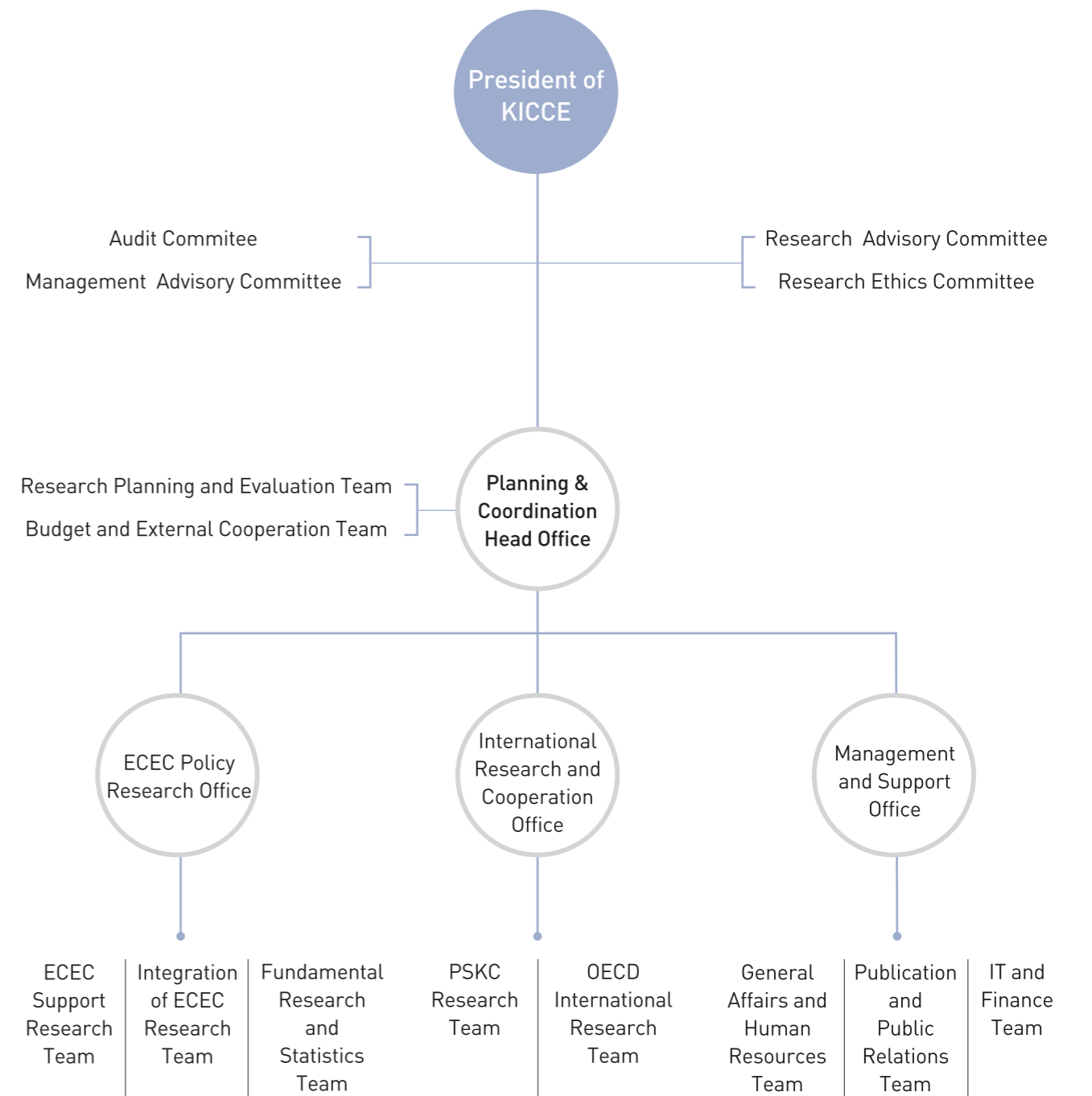
# Vision

KICCE leads the way in the advancement of Korea through provision of the best early ECEC.



# Organization

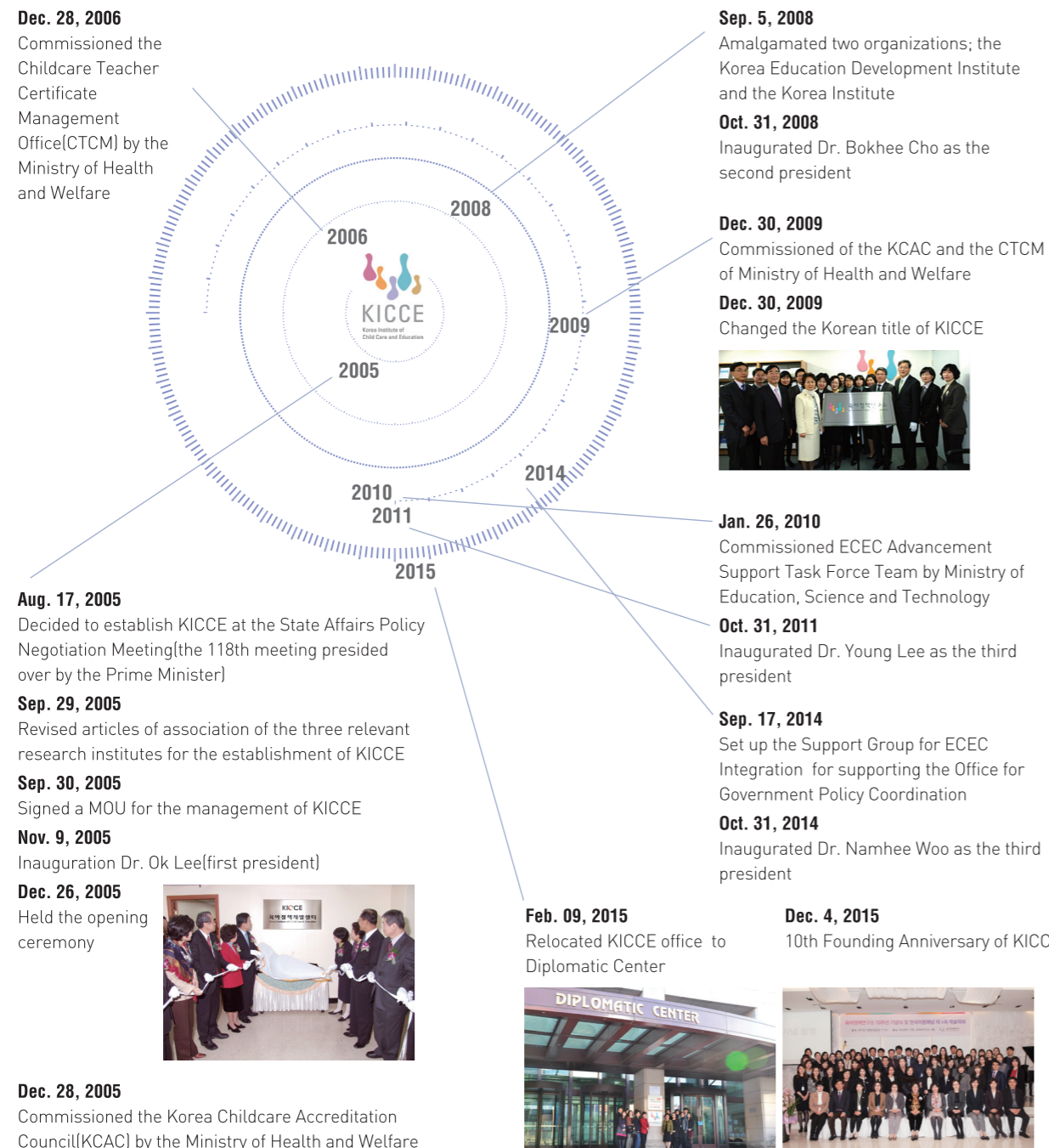
To develop and realize the best child care policy, we build a system that can maximize research capabilities and support research effectively.





# History

KICCE is currently writing new history to develop the best child care policy agenda in this rapidly changing environment.



# Research Areas

To stand true to our purpose of conducting quality research on national human resource development, KICCE carries out timely research and plays a leading role in the development of ECEC policies.

KICCE is keen to contribute to the advancement of Korea by developing effective policy measures on kindergartens and childcare centers, ECEC integration, improving ECEC support services, fostering future human resources, raising fertility rates and providing support for parents.

## ECEC Support Research Team

To provide good family environment for young children, the ECEC Support Research Team conducts research on family child care support, child care institution support, community child care support, and protecting parental rights and suggests important implications for policy.

## Integration of ECEC Research Team

Developing quality in Early Childhood Education and Care, the Integration of ECEC Research Team carries out various studies in the operation of kindergarten and child care center and improved professional competences of ECEC staff.

## Fundamental Research and Statistics Team

The Fundamental Research and Statistics Team conducts basic research to devise long-term plan for ECEC policy and regularly collects data on child development and well-being to carry out various studies in demand for ECEC, finance, and standard cost of child care and early childhood education.

## PSKC Research Team

Since its inception in 2008, the Panel Study of Korean Children (PSKC) Research Team has collected data on infant lives for the first time in Korea and investigated the effects of ECEC policy on Korean child development. PSKC research team also strives to spread the research findings in other countries through translation and international seminar.

## OECD International Research Team

To serves as the international research hub, the OECD International Research Team investigates the international trends in ECEC, disseminates the outcomes, and builds a research collaboration with various countries.



# Research Projects in 2015

KICCE endeavored to build a sturdy foundation for customer-oriented ECEC policy through policy researches and entrusted researches, contributing to the improvement of child-rearing environment and child care services.



## Basic

- ▶ Plan for Strengthening and Protecting the Rights of Kindergarten Daycare Teachers
- ▶ Measures to Reinforce Child Care Service for Child Care Centers and Kindergartens
- ▶ The Study of Sustainable Child Care Support Field for Inter-Korea Exchange and Cooperation
- ▶ Utilization of Decent Part-time Jobs in Childcare Center and Kindergarten
- ▶ A Study of Grandparents Raising Young Grandchildren and Support System
- ▶ KICCE Childrearing Price Index and Parents' Perception of the Cost of Childrearing (II)
- ▶ Current Status and Improvement Plans of Early Childhood Education and Care in Rural Areas
- ▶ Mid-to-Long Term Forecasts of the Demand and Fiscal Spending for Early Childhood Education and Childcare
- ▶ Issues and Tools of the International Assessment on Young Children's Learning and Development
- ▶ Preschoolers' Current Private Education Status and Improvement Measures: Focused on the Effects of Early Foreign Language Education
- ▶ The trend of child care support policy and its future challenges



## Major

- ▶ Achievements and Challenges of Childcare Policies in 2015 Outcomes of the Early Childhood Education Policy in 2015 and Future Tasks
- ▶ Measures to Substantiality of Childcare Support for Improving Fertility and Work-Family Balance(V): Improvement Measures and Current Status of Establishment of Industrial Complex Childcare centers
- ▶ Revising the Nuri Curriculum for Children at Age 3 to 5
- ▶ 「Nuri Curriculum for Ages 3 to 5」: Plans for Strengthening Partnerships between ECEC centers, Home, and Community
- ▶ An Investigation of the current states of the operation and use of '3-5 years of NURI curriculum' and its Effectiveness
- ▶ Developing an inventory for measuring character of ECEC teachers and strategies for enhancing their character education
- ▶ Estimation Study on children's(0-5 years) Education and Childcare Expenses III
- ▶ A Study on the Calculation of Childcare Expenses by Considering Regional Characteristics 2015
- ▶ Estimating the Standard Cost of Kindergarten Education in 2015
- ▶ Individualized Child Care Support Plans ( I )
- ▶ Plans to Further Safe Childcare Education Environments
- ▶ Panel Study on Korean Children (PSKC) 2015
- ▶ Panel Study on Korean Children (PSKC) 2008-2014 in-depth Data Analysis Research
- ▶ KICCE i-POL Project for Childcare Policy Communication
- ▶ Current status of Support Center for Childcare and its Operation of Substantiality
- ▶ Supporting Research Plan for Improving Child Health: Advancing the Physical Health Program



## Occasional

- ▶ A Study on the Region Types by Child Care Center-Kindergarten Infrastructure Divide
- ▶ Developing the Curriculum Evaluation Index and Manual for Excellent Kindergarten: Focusing on the Character · Creativity Education
- ▶ The Operation Status and Evaluation of 「Parent Monitoring Group」 for Child Care Center
- ▶ Performance Evaluation and Development Plan for Public Child Care Center
- ▶ Situation and Prospect for Child Care Center Supply and Demand by Region-Type
- ▶ Promoting the Parental Role and Participation at the Child Care Center in Incheon Metropolitan City
- ▶ Result Analysis of the Demonstration Project(2012~2015), 「Excellent Kindergarten and Child Care Center on Character Education
- ▶ A Study on the ECEC Teacher's Awareness of Unification and Promoting the Unification Education
- ▶ CCTV Installation at the Kindergarten-Child Care Center and Management Plan for Protecting the Right of Children



## Entrusted

- ▶ Emotional Healing Service for Children with Behavior Problems | Korea health industry development institute
- ▶ Improving the Effectiveness and Internal Stability of Childcare Support Program | Life Insurance Philanthropy Foundation
- ▶ ROK-OECD International Seminar on ECEC Policy | Ministry of Education
- ▶ A Study on the Coordination Plan of Kindergarten and Child Care Center Operating Hours | Support Group for ECEC Integration
- ▶ A Study on the Effectiveness of Supporting Diapers · Powdered Milk Program for Low-Income Families



- | Ministry of Health and Welfare
- ▶ Survey on the Actual Condition of Workplace Nursery Ministry of Health and Welfare | Ministry of Health and Welfare
- ▶ Strengthening and Integrating the Financial Accounting Plan for Kindergarten-Child Care Center | Support Group for ECEC Integration
- ▶ A Study on the Reform of Childcare Staff Qualification System | Ministry of Health and Welfare
- ▶ Role-Split Plan for the Jeonbuk Support Center for Childcare | Jeonbuk Support Center For Childcare
- ▶ 2014 Evaluation of Child Care Center Support Project | Life Insurance Philanthropy Foundation
- ▶ A Study on the Reform of Kindergarten-Childcare Teacher Training · Qualification | Support Group for ECEC Integration
- ▶ Developing the Open-Childcare Program to Extend Parental Involvement | Ministry of Health and Welfare
- ▶ Developing the Performance Evaluation Index and Result Analysis of the Support Center for Childcare | Support Center for Childcare
- ▶ A Study on the ECEC Teacher Education and In-Service Teacher Training Program in China | KIEP (Cooperation)
- ▶ A Study on the Integrated Assessment Manual for Kindergarten -Child Care Center | Support Group for ECEC Integration
- ▶ International Comparative Study of Teacher Education and Retraining ECEC Teachers | Ministry of Education
- ▶ Needs Analysis for Raising the Installation Rate of Workplace Nursery | Ministry of Health and Welfare
- ▶ A Study on the Operation Manual for In-Service Teacher Training | Ministry of Health and Welfare
- ▶ Review of the Arts and Culture Education for Young Children in 2015 | Korea Arts & Culture Education
- ▶ Demonstration Project of Kindergarten and Child Care Center Integrated Assessment | KCPI
- ▶ Enhancing the Function of Research Child Care Center(2): Focused on the Human Resource | BaboNanum
- ▶ 2015 Public Relations Activity of Early Childhood Education | Gyeonggi-do Office of Education



# Research Plans in 2016

KICCE develops effective policies and carries out researches in a preemptive manner to handle important ECEC issues, and to suggest a new vision in ECEC.

## Studies on the ECEC Policy Support and Monitorin

- ▷ Evaluation and Improvement of Public Investment in ECEC Policy
- ▷ Implementation of the Integration of ECEC
- ▷ Improving the Effectiveness of Institute for Young Children: Focused on the Family Child Care
- ▷ Creating the Environment to Enhance the Effectiveness of ECEC Program
- ▷ Consulting Support for Improving Child Care Services

## Studies of the National Curriculum on ECEC to Improve the Child Support Services

- ▷ Various Operation Plans for the Effective Implementation of Nuri Curriculum
- ▷ Achievements and Analysis of the Nuri Curriculum Policy
- ▷ Evaluation of the Nuri Curriculum
- ▷ Plan to Increase Job Satisfaction of ECEC Teachers
- ▷ Analysis on the Operation Time Policy for Promoting Child Care Support
- ▷ Child Care Support Plan by Regions

## Studies on the Child Support Policy for Vulnerable Groups

- ▷ Building the Child Support System for North Korea Refugees: Focused on the First Step of Settling
- ▷ Child Support Plan for Adopted Children

## Studies on the Future Manpower Development

- ▷ Brain Development and Childrearing Environment for Improving Children's Creativity
- ▷ Improving Health of Young Children
- ▷ Current Status and Improvement Plan for Private Education of Children(III)
- ▷ Creating the Safe Learning-Care Environment for Children(II)

## Studies on Child and Parent Support to Increase the Fertility Rate

- ▷ Substantial Proposal for Child Care in Family
- ▷ Increasing Father's Participation in Childrearing
- ▷ Korean View on Parenthood and Childrearing

## Studies of ECEC Data Analysis

- ▷ ECEC Cost Estimates(IV)
- ▷ KICCE Childrearing Price Index(IV)
- ▷ 2016 Childcare Cost Estimates by Using Service Hours
- ▷ 2016 Standard ECEC · Tuition Estimates
- ▷ Longitudinal Study on the Development of Korean Children





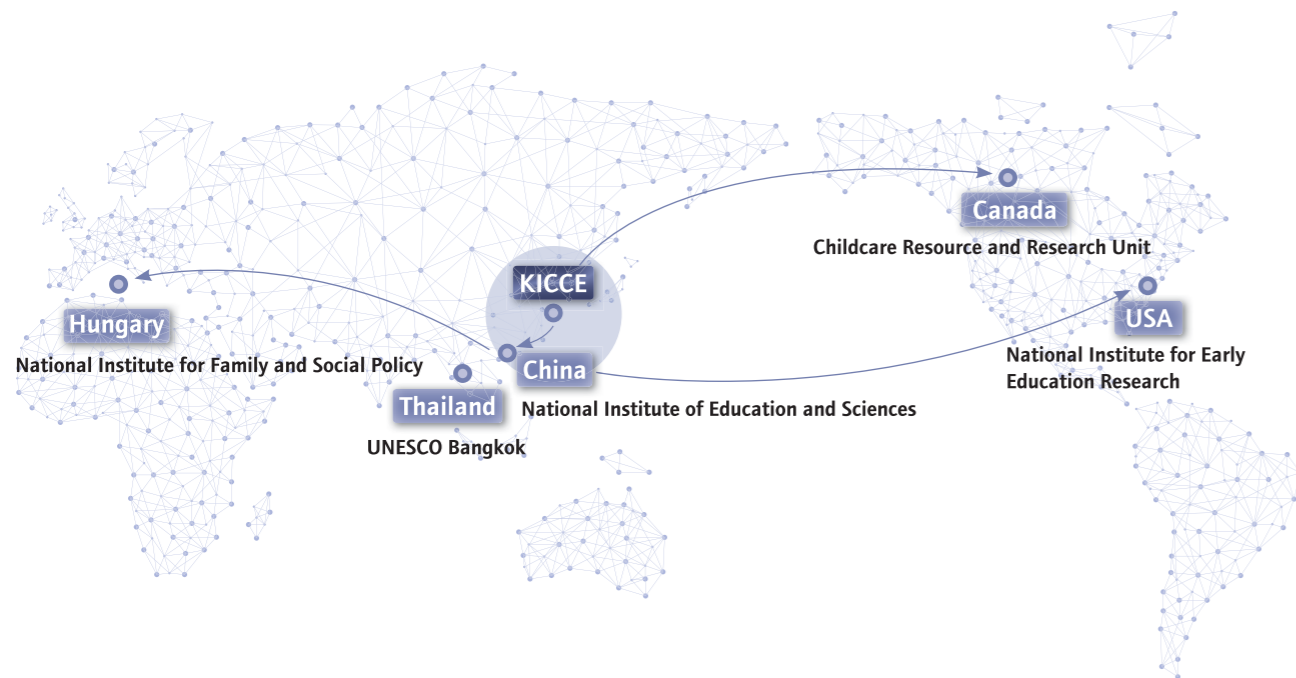
# KICCE Network

## International and domestic cooperative organizations

KICCE is an international research institute specialized in ECEC policy. It analyzes major agenda in ECEC and children support, and carries out various cooperation projects in cooperation with both domestic and foreign experts.

## MOU with Foreign Institutions

KICCE, as a sole institute for ECEC policies in Korea, has signed MOU with international organizations for cooperation on policy research and relevant information.



## International ECEC Network

KICCE actively participates in international academic activities and projects through our strong networks with other governmental and private organizations.

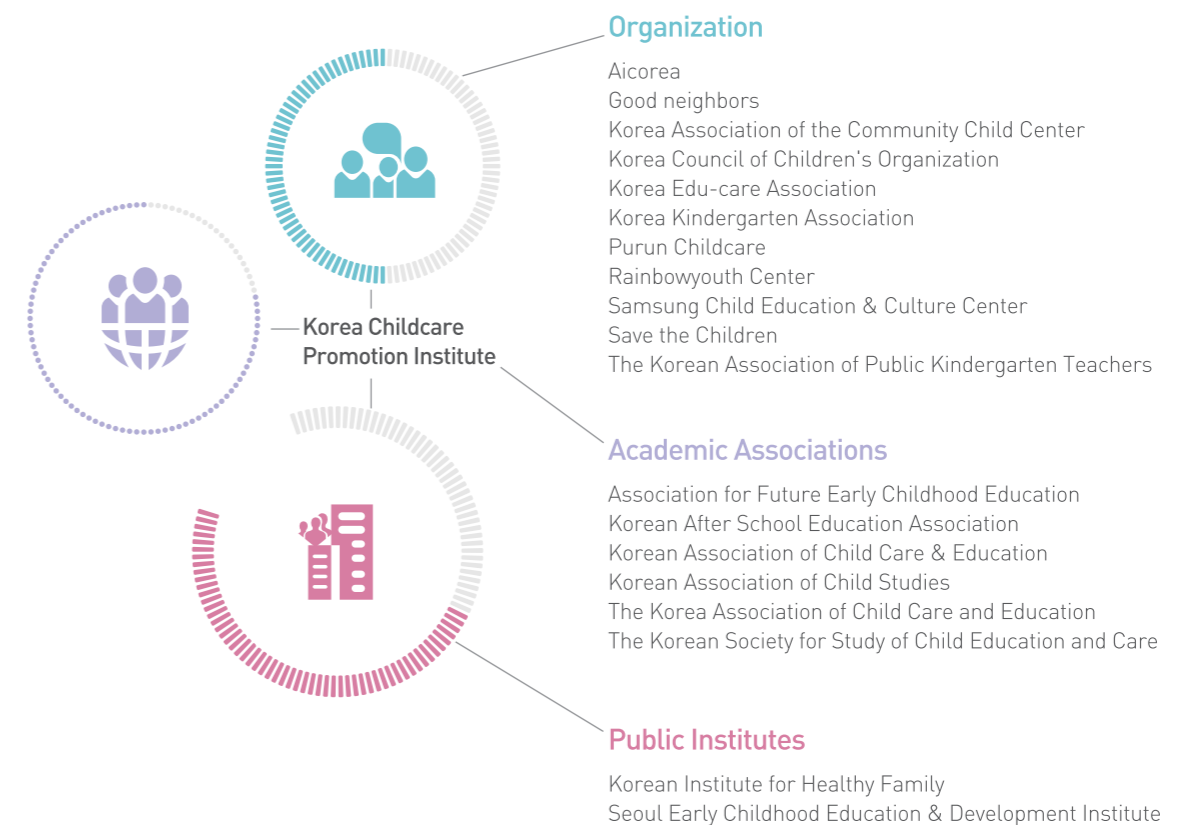
- ▶ International Organizations (OECD, UNESCO, UNICEF, World Bank, EU etc.)
- ▶ Policy Research Institutes (USA National Institute for Early Education Research, National Aeronautics and Space Administration, Canada Childcare Resource and Research Unit, Germany State Institute of Early Childhood Research, Deutsches Jugendinstitut, Hungary National Institute for Family and Social Policy, China National Institute for Education and Sciences, Singapore National Institute of Education, Early Childhood Development Agency)
- ▶ Information Centers (USA Education Resources Information Center for Early Childhood Education, USA National Child Care Information Center)
- ▶ Organizations for ECEC (Australia National Childcare Accreditation Council, Singapore Preschool Qualification Accreditation Committee etc.)
- ▶ Academic Association (Asia-Pacific Regional Network for Early Childhood, Pacific Early Childhood Education Research Association, European Early Childhood Education Research Association, Organization Mondiale Pour L'Education Prescolaire etc.)

## MOU with Domestic Institutions

KICCE has currently concluded MOU with Duksung Women's University, Sookmyung Women's University, Baejae University, Baekseok Culture University, Woosong University, Hannam University, Hyejeon College, Hyecheon College, and Hoseo University, University of Ulsan College of Medicine, Seoul Community rehabilitation Center to make strong cooperation with experts to draw up a practical policy alternative.

## Advanced Child Care Support Network

As part of our network activities in policy research, KICCE established Advanced Child Care Support Network through which KICCE attempts to build a flexible support system of active exchanges and to share the best knowledge and information.



## International ECEC Network

KICCE, as a sole institute for ECEC policies in Korea, has signed MOU with international organizations for cooperation on policy research and relevant information.

# Publications

To release and share the political research on ECEC, various forms of publications are being published.

## Research Report

It offers research results to support ECEC policy making. 61 kinds of reports are published in 2015, having piled up 450 research reports and source books since 2005.



## Issue Paper

It presents analyses and counter-plans for the rising issues on ECEC.



## The Korean Journal of Child Care and Education Policy

As an approved journal of National Research Foundation of Korea, it has been published semi-annually(3 times per year after 2016). It, as an academic journal for experts, deals with political issues and tasks targeting on preschool children.



## International Journal of Child Care and Education Policy

International Journal of Child Care and Education Policy is an International journal published by KICCE and National Institute for Early Education Research (NIEER) of Rutgers University, New Jersey, USA. The journal covers early childhood education and child care policy while being published in electronic form through the official website.



## Early Childhood Education and Care Policies Brief

As to current ECEC issues, practical and political guides are offered in a prompt manner. Careful consideration is put in for the ease of the public as well as the experts in a monthly basis.



## KICCE Policy Forum on ECEC

It contains two major categories. One is 'focus' which analyzes political tasks on childcare and the other is 'trend' which deals with child care policy trend.



## International Trends of Early Childhood Education and Care Policies

International Trends of Early Childhood Education and Care Policies It is a sourcebook to analyze up-to-date global trend in ECEC. Until now 14 books are published including Japan( I , II ), Sweden(I, II), Australia(I, II), UK, USA, Canada, Finland(I, II), France, New Zealand, German, Taiwan, Norway and Ireland.



# Online Service

KICCE discloses research reports and domestic/foreign policy trends via its website to share and deliver significant information.

## Websites of KICCE

Home page <http://www.kicce.re.kr>

Mobile Web <http://www.kicce.re.kr/mobile>

KICCE offers open access to research reports and publications. Up-to-date information and trend analysis on ECEC policies are also provided.

Blog <http://blog.naver.com/KICCE1st>

Twitter <https://twitter.com/KICCE>

Facebook <http://www.facebook.com/KICCE1>

KICCE news and ECEC policy trends are promptly provided to the subscribers.



## Family Sites

i-POL <http://ipol.kicce.re.kr>

i-POL Project aims to collect public opinions and reflect them back to the policies. Every citizen is welcomed to visit I-POL homepage and suggest opinions freely.



Panel Study on Korean Children <http://panel.kicce.re.kr>

Panel Study on Korean Children, as a longitudinal study, aims for investigating early childhood and its the surrounding environment by tracking a growth process from the birth and examining developmental needs from each growth stage, mental characteristics of parents, the current status of child-rearing, and the work of child-rearing support agencies accordingly. Panel data are provided via open access.



Korean Journal of Child Care and Education Policy <https://kicce.jams.or.kr>

As an approved journal of National Research Foundation of Korea, it has been published semi-annually. Paper Contribution and Journal subscription are available on the official website.



International Journal of Child Care and Education Policy <http://www.ijccep.com>

International Journal of Child Care and Education Policy is an international journal published by KICCE and National Institute for Early Education Research (NIEER) of Rutgers University. Paper Contribution and Journal subscription are available on the official website.







KICCE devotes every effort to develop and improve childcare and education policy in Korea in a dream of happiness and togetherness of children, their families, and whole nation.





KICCE devotes every effort to develop and improve childcare and education policy in Korea in a dream of happiness and togetherness of children, their families, and whole nation.