

# Korea Institute of Child Care and Education

Diplomatic Center, 3F, 4F, 2558, Nambusunhwan-ro, Seocho-gu, Seoul 06750 Korea  
Tel 82 2 398 7700 Fax 82 2 398 7798 www.kicce.re.kr

Korea  
Institute of  
Child  
Care and  
Education

For happiness of children,  
For happiness in raising children,  
KICCE is with you!



육아정책연구소  
Korea Institute of Child Care and Education

## Contents

- 04 President's Message
- 06 Vision and Mission
- 08 History
- 10 Organization
- 12 Major Research Projects in 2019
- 14 Overseas Partners
- 15 Domestic Partners
- 16 Academic Events in 2019
- 17 Publications
- 18 Online Services

Every child has the right to be healthy and happy.

As a national research institute,  
KICCE will endeavor to create a society in which  
families, communities, enterprises and the nation  
work together for happiness of children and  
happiness in raising children.





President of  
Korea Institute of Child Care and Education

*Baek Sunhee*

Korea Institute of Child Care and Education(KICCE) is a government-funded research institute, affiliated with the National Research Council for Economics, Humanities and Social Sciences under the Prime Minister's Office. KICCE studies and develops early childhood education and care(ECEC) policies comprehensively and systematically.

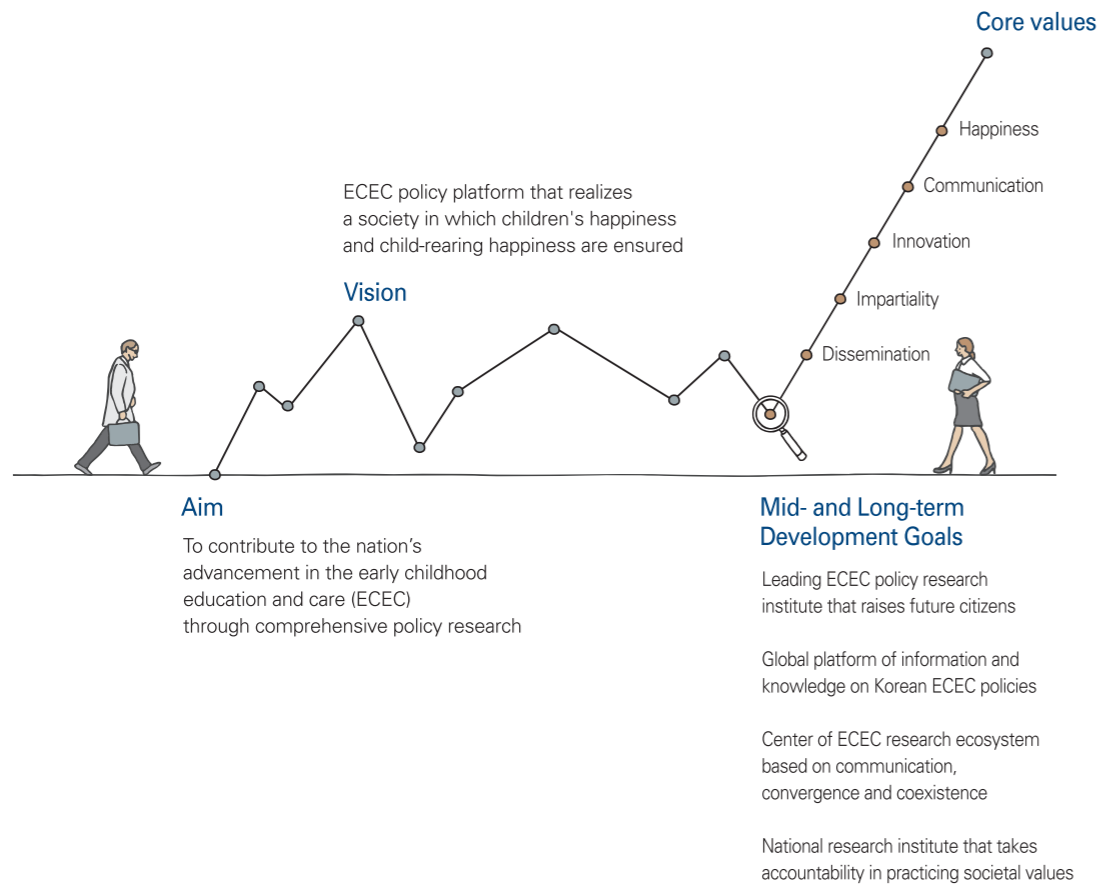
KICCE was established in 2005 when Korea was suffering from the critical low fertility rate. Since then on, KICCE has greatly contributed to various areas such as child wellbeing, child-rearing culture and national policy development through a wide range of research, assessment and policy development on ECEC.

In response to the rapid changes in the social environment and changes in the paradigm of low fertility policies, KICCE strives to enhance children's rights, ensure work-life balance and create a society suitable for child-rearing.

Every child has the right to be healthy and happy. As a national research institute, KICCE will endeavor to build a society in which families, communities, enterprises and the nation work together for happiness of children and happiness in raising children.

Your interest and support will be very much appreciated.  
Thank you.

For happiness of children, for happiness in raising children,  
 KICCE is with you!

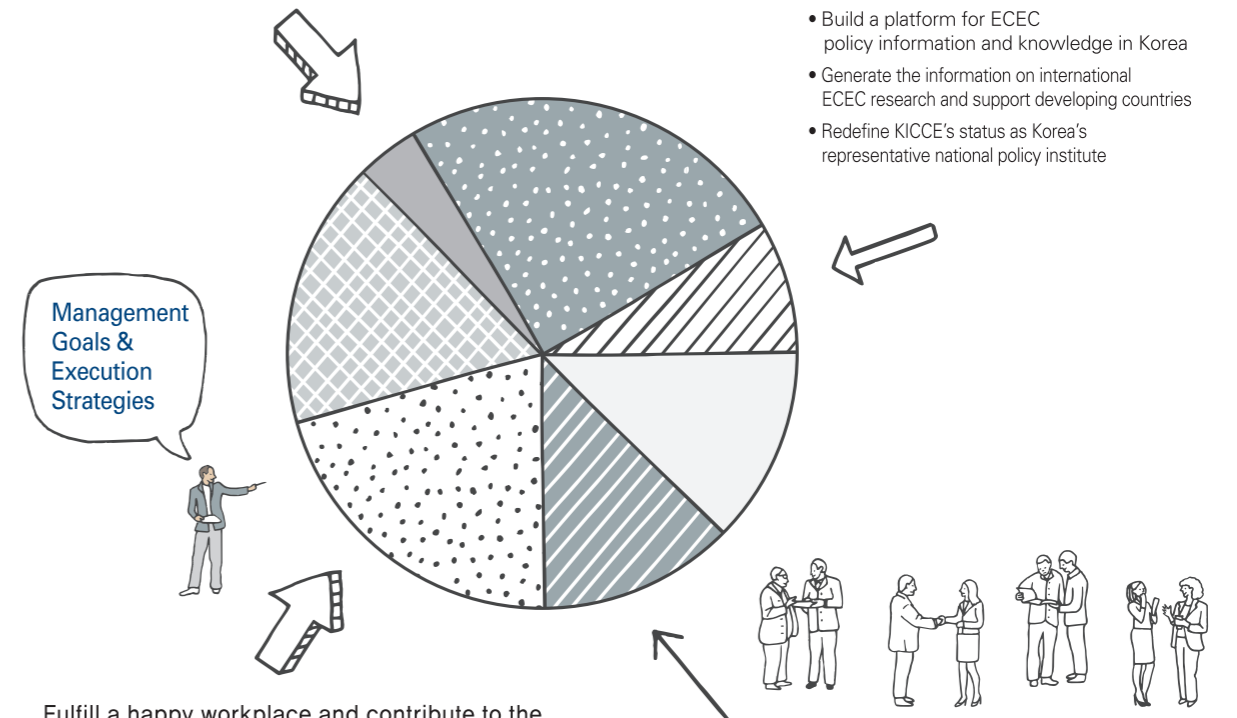


**Lead the expansion of areas of ECEC research and policy development**

- Identify the anticipatory ECEC policy agenda
- Expand the research area to cope with the changes in demographics and child-rearing environment
- Strengthen the research competence and maximize management efficiency for enhancing outcomes of ECEC policy

**Realize a global platform of Korean ECEC policy research**

- Build a platform for ECEC policy information and knowledge in Korea
- Generate the information on international ECEC research and support developing countries
- Redefine KICCE's status as Korea's representative national policy institute



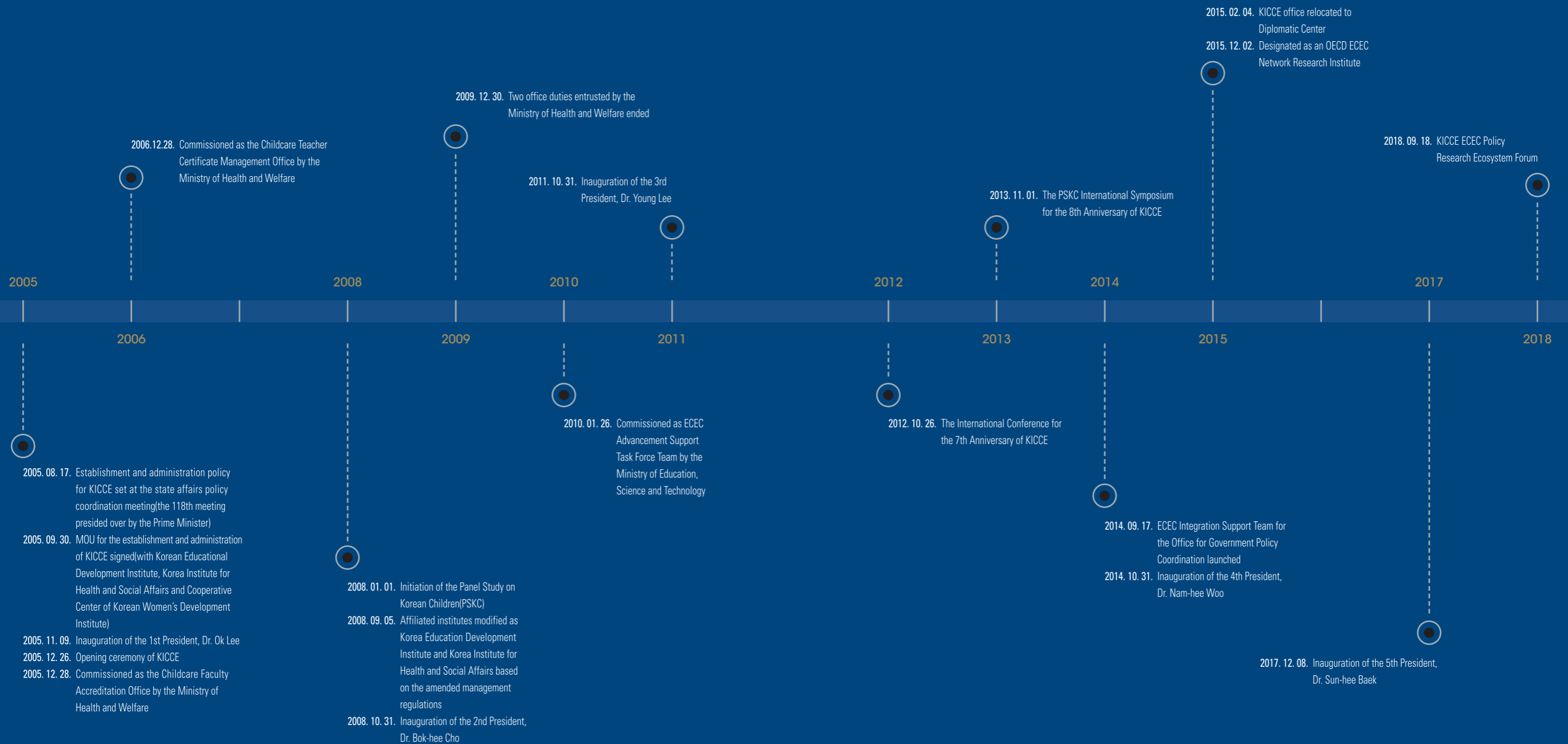
**Fulfill a happy workplace and contribute to the society through open and innovative management**

- Maximize efficiency for innovative management
- Pursue a happy organizational culture that cultivates trust and respect among KICCE staff
- Promote ethical awareness and enhance social contributions

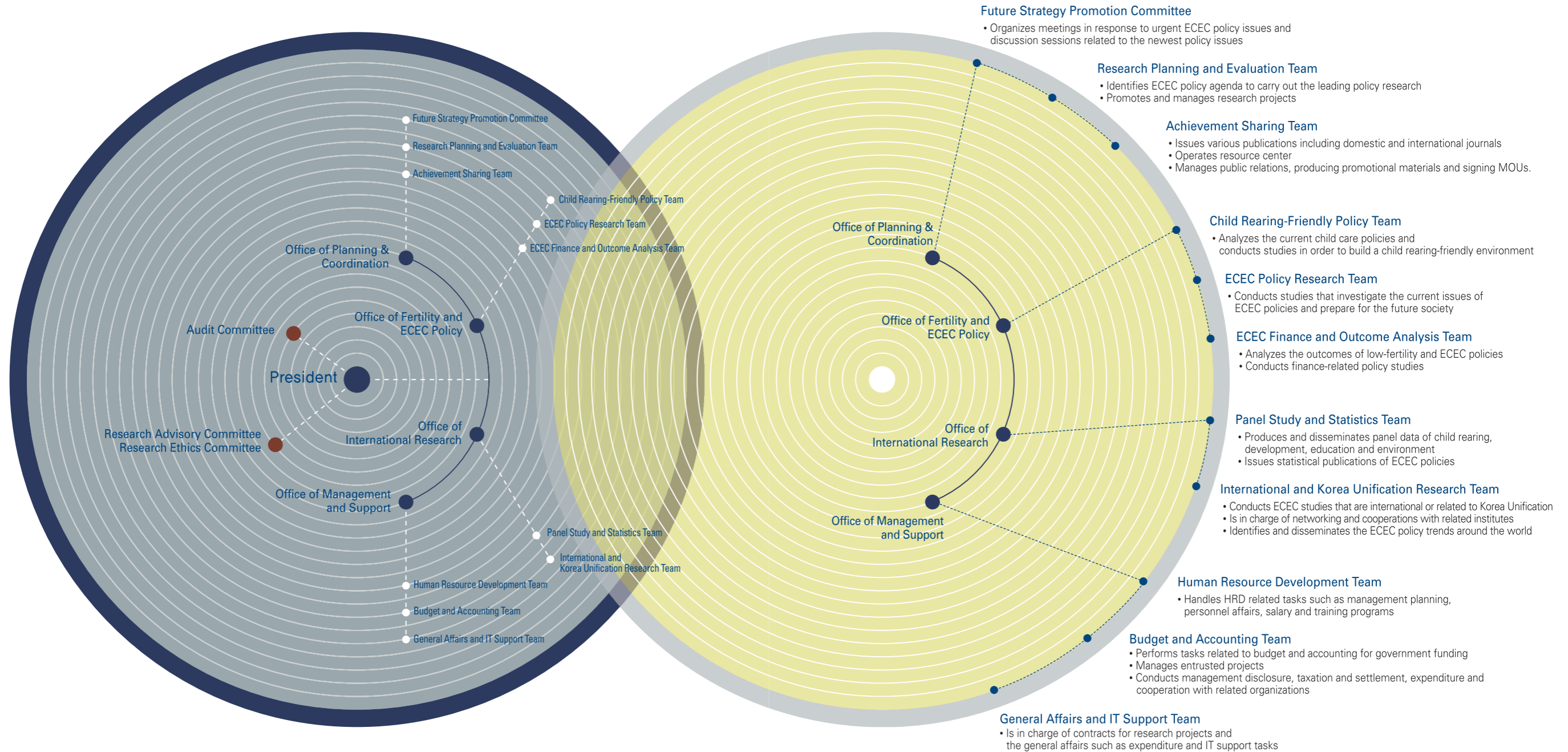
**Establish a ECEC policy research ecosystem of communication, sharing and cooperation**

- Vitalize interdisciplinary collaborative research with Industry-academia-research institute
- Expand and reinforce the network with domestic and overseas related organizations
- Strengthen participation of policy recipients in research and sharing of research outcome

The following is the timeline of KICCE history since its inception in 2005. Today, KICCE is still writing a new history of its significant contributions that will make Korea one of the leading countries in developing early childhood care and education(ECEC) policies.



KICCE is building a happy workplace through open and ethical management for ECEC policy research and policy development to fulfill social values.



KICCE selects topics and conducts studies that contribute to the development of ECEC policies by analyzing and evaluating the policies and producing basic data for policy-making.

#### Major Projects

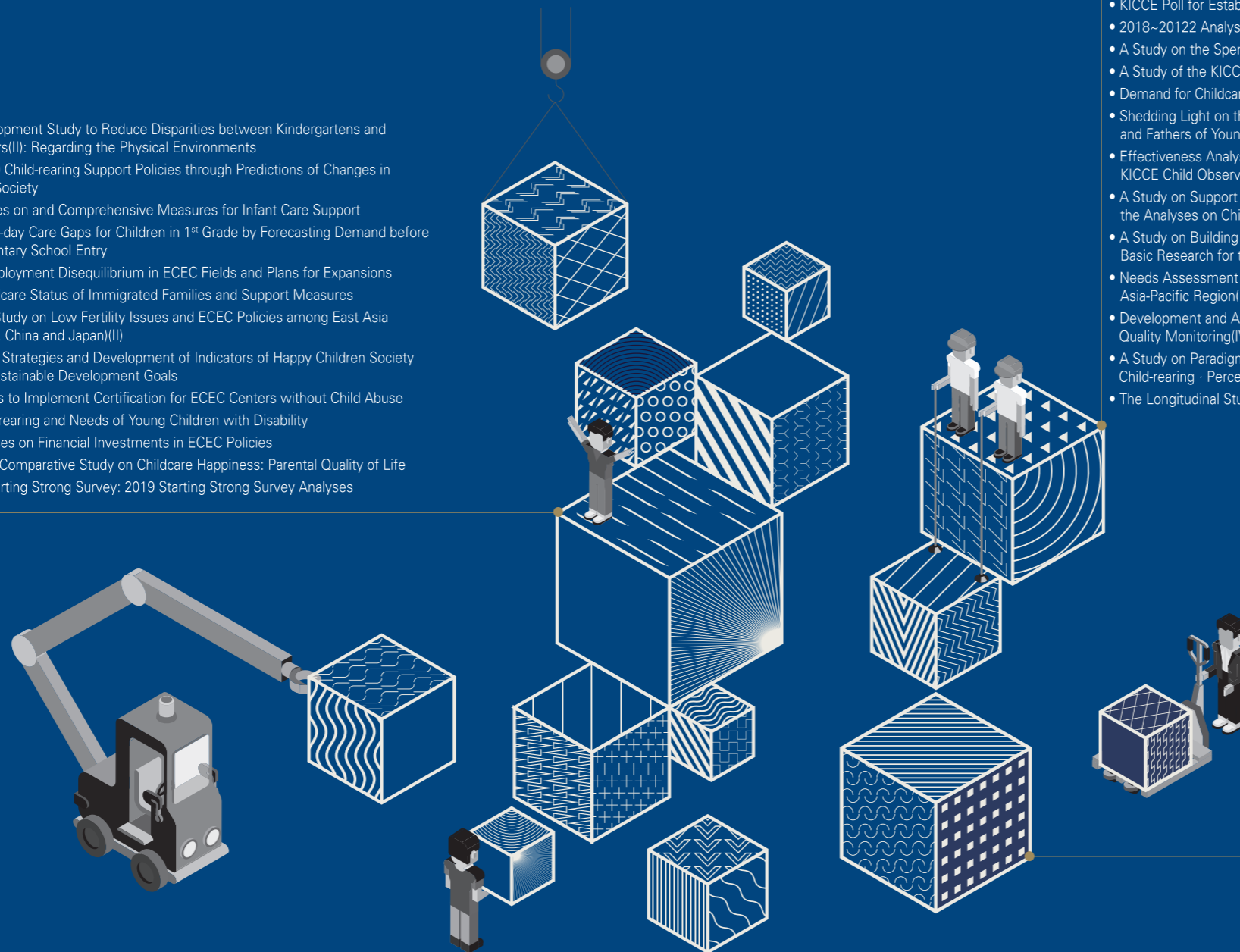
- Roadmap Development Study to Reduce Disparities between Kindergartens and Childcare Centers(II): Regarding the Physical Environments
- A Study on 2040 Child-rearing Support Policies through Predictions of Changes in Population and Society
- Demand Analyses on and Comprehensive Measures for Infant Care Support
- Measures for All-day Care Gaps for Children in 1<sup>st</sup> Grade by Forecasting Demand before and after Elementary School Entry
- Analyses on Employment Disequilibrium in ECEC Fields and Plans for Expansions
- A Study on Childcare Status of Immigrated Families and Support Measures
- A Comparative Study on Low Fertility Issues and ECEC Policies among East Asia Countries(Korea, China and Japan)(II)
- Policy Utilization Strategies and Development of Indicators of Happy Children Society Based on UN Sustainable Development Goals
- A Study on Ways to Implement Certification for ECEC Centers without Child Abuse
- Survey on Child-rearing and Needs of Young Children with Disability
- Outcome Analyses on Financial Investments in ECEC Policies
- An International Comparative Study on Childcare Happiness: Parental Quality of Life
- OECD TALIS Starting Strong Survey: 2019 Starting Strong Survey Analyses

#### General Projects

- Customized Child-rearing Supporting Plans(V): Current Status and Supporting Strategies for Young Children
- KICCE Poll for Establishing the Culture of Happy Childcare(III)
- 2018~20122 Analyses and Projects on Child-rearing policy(II): 2018 Child-rearing Outcome Analyses
- A Study on the Spending and Child-rearing Costs of Households with Young Children(II)
- A Study of the KICCE Child-rearing Price Index(CPI)(II)
- Demand for Childcare Services of Households with Infants/Children and Governmental Policy Support(III)
- Shedding Light on the Blind Spot of Parent Education(II): Parent Education Projects for Working Parents and Fathers of Young Children
- Effectiveness Analysis of Nuri Curriculum(II): Development and Implementation of KICCE Child Observation Scale
- A Study on Support Strategies for Child-rearing of Vulnerable Families(II): the Analyses on Child-rearing Status in Vulnerable Families
- A Study on Building Child-rearing-Friendly Villages for Overcoming Extremely Low Fertility Society(II): Basic Research for the 1<sup>st</sup> Stage of KICCE Child-rearing-Friendly Villages
- Needs Assessment and Implementation Plan for ECCE Policy Development and Cooperation in the Asia-Pacific Region(II): Implementation of Consulting and Analysis
- Development and Application of Evaluation-based CARE Consulting Model for Childcare Centers' Quality Monitoring(IV): the Effects of CARE Consulting
- A Study on Paradigm Shift to Cultures with Respect for Child-rearing and Ways to Form Positive Child-rearing - Perceptions(I): Analyses of Child-rearing Culture and Tasks
- The Longitudinal Study on Growth and Development of Korean Children 2019(PSKC II)

#### Occasional/Commissioned Projects

- KICCE carries out research on various ECEC policies with government ministries including Ministry of Education, Ministry of Health and Welfare, Ministry of Gender Equality and Family and Ministry of Employment and Labor and other international organizations such as OECD, ARNEC and UNESCO.



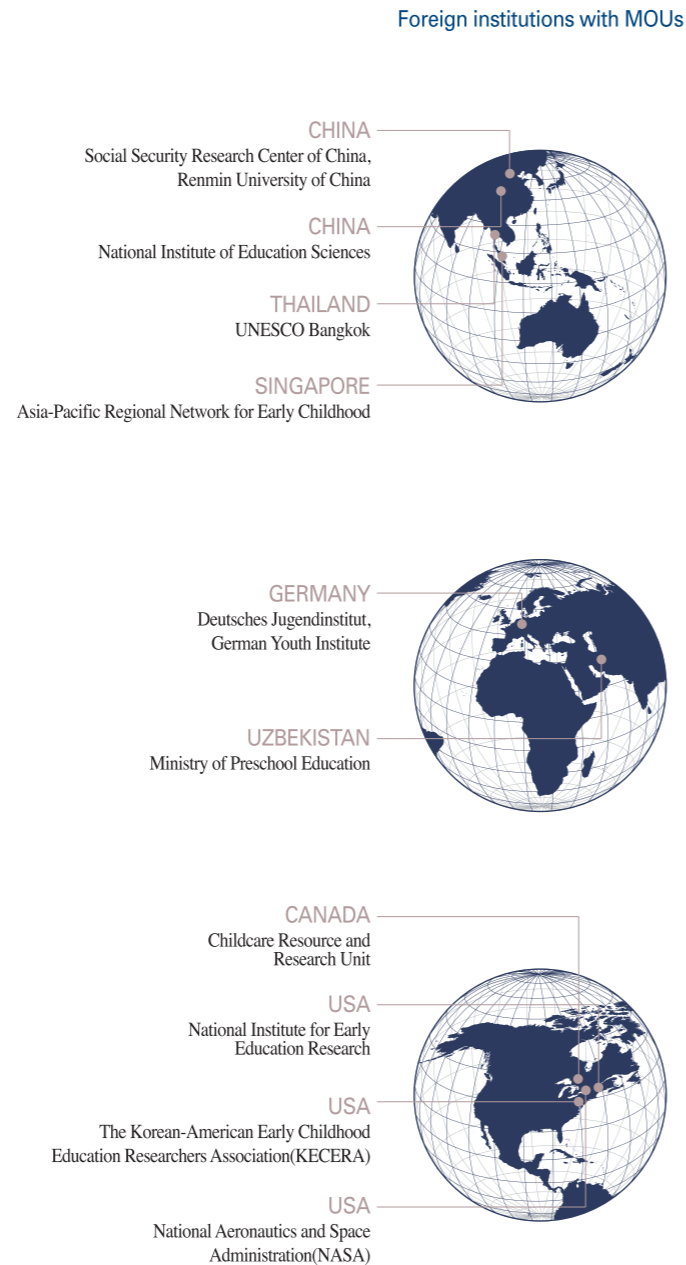
Overseas Partners

As the only ECEC policy research institute in Korea, KICCE has made international exchanges on policy research and childcare information through MOUs with various related institutions around the world.

Overseas ECEC policy network

KICCE is actively engaged in international exchanges and academic activities by establishing networks with related institutions and international organizations in various countries around the world.

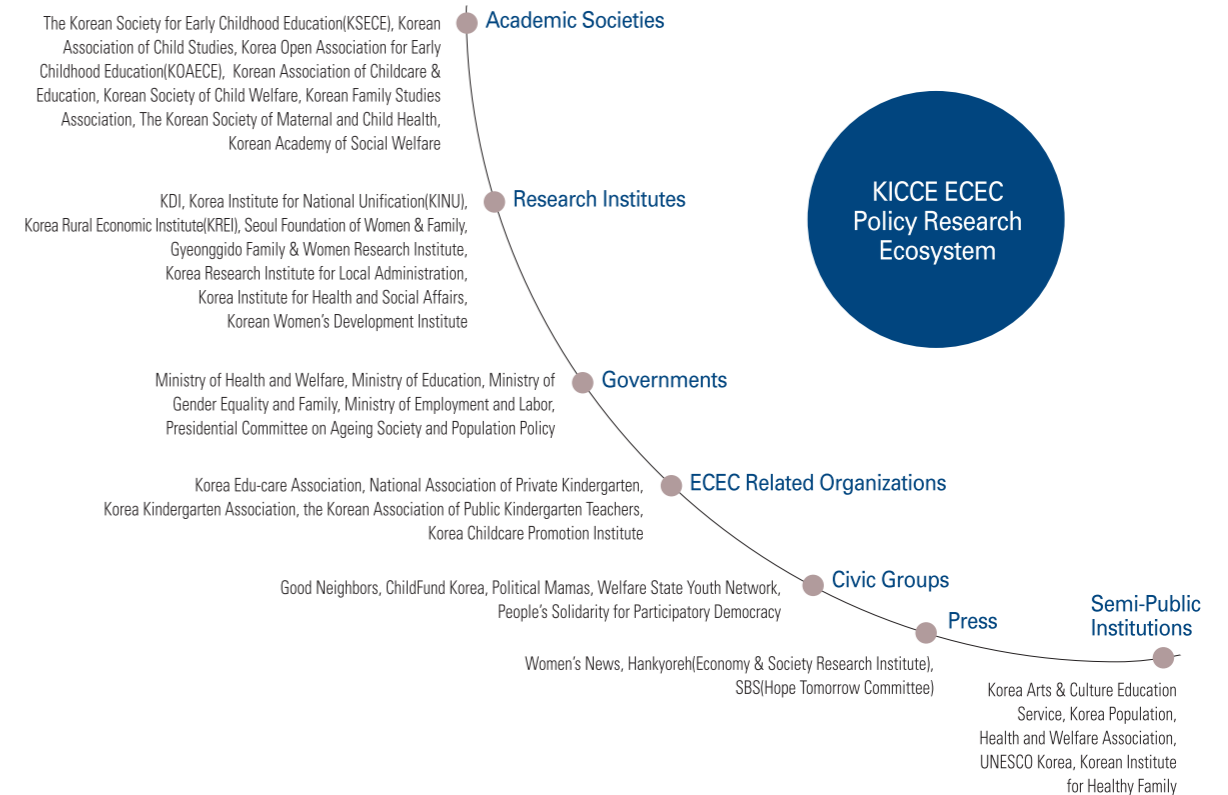
- **International organizations** | OECD, UNESCO, UNICEF, World Bank, EU etc.
- **Government departments** | UZBEKISTAN Ministry of Preschool Education of the Republic of Uzbekistan
- **Policy research institutes** | U.S. National Institute for Early Education Research, National Aeronautics and Space Administration, CANADA Childcare Resource and Research Unit, GERMANY State Institute of Early Childhood Research, Deutsches Jugendinstitut, HUNGARY National Institute for Family and Social, SINGAPORE National Institute of Education, Early Childhood Development Agency, CHINA National Institute for Education Sciences of China, CHINA Social Security Research Center of China, Renmin University of China
- **Information centers** | U.S. Education Resources Information Center for Early Childhood Education, U.S. National Child Care Information Center
- **Organizations** | AUSTRALIA National Childcare Accreditation Council etc.
- **Academic societies / Associations** | Asia-Pacific Regional Network for Early Childhood, Pacific Early Childhood Education Research Association, The Korean-American Early Childhood Education Researchers Association, European Early Childhood Education Research Association, Organisation Mondiale Pour L'Education Prescolaire etc.



Domestic Partners

KICCE exchanges ECEC studies and information through MOUs with leading universities and related institutes in Korea.

Since 2018, it has initiated and operated “KICCE ECEC Policy Research Ecosystem” with local governments, research institutes and civil society organizations.



KICCE ECEC Policy Research Ecosystem

The ECEC Policy Research Ecosystem, composed of various related organizations such as academic societies, research institutes, governments, ECEC organizations, civic groups, press and semi-public institutions, aims to develop leading ECEC policies through interdisciplinary research base and to build a cooperation system among industries, universities and institutes for creating synergy.



## Academic Events in 2019

KICCE holds a variety of academic events in order to disseminate research outcomes.

**Open Debate: KICCE Active Listening(KAL)**

The open debate provides opportunities for KICCE to actively listen to expectations and demands related to ECEC policies from various groups such as academia, parents, fields, governments and civic groups in order to fulfill its duties as a national research institute. It was held five times in 2018 and will be held three times in 2019.

**ECEC Policy Symposium**

A total of 4 symposiums are planned in 2019 under the overall theme of "Policy Direction and Tasks for Happiness of Children and Happiness in Raising Children" with sub-themes of prenatal-infant-young children-elementary children.

**KAL Child-rearing Site Visit Meetings**

The meetings were launched after KICCE Active Listening (KAL) in order to actively listen to difficulties of various families(parents) by visiting them and reflect the results to policies. It was held 7 times in 2018 and will be held 6 times with expanded targets including teachers in the fields.

**KICCE East Asia ECEC Policy Seminar**

KICCE signed MOU with Social Security Research Center of China, Renmin University of China and held 2 East Asia ECEC Policy Seminars. In 2019, joint studies, policy seminars and academic events are planned.

**10th Panel Study on Korean Children Conference**

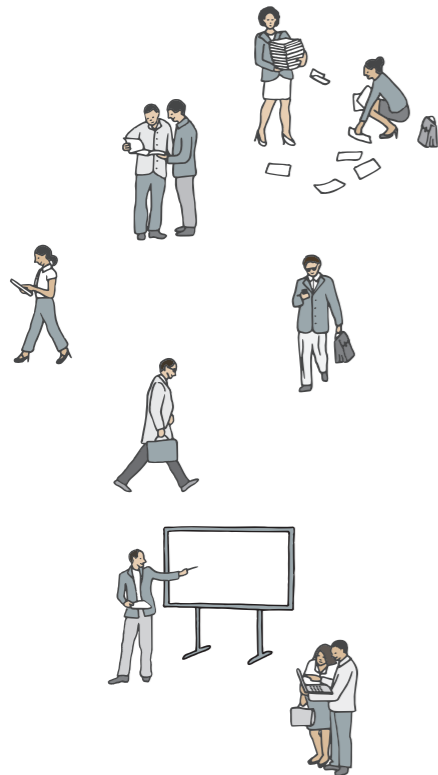
As part of PSKC, a representative longitudinal study of KICCE, on international conference will be held in 2019.

**KICCE ECEC Policy Research Ecosystem Forum**

The KICCE ECEC Policy Research Ecosystem, composed of various related organizations, aims to develop leading ECEC policies through interdisciplinary research base and to build a cooperation system among industries, universities and institutes for creating synergy. The first forum was held in 2018, and two forums are planned in 2019.

**Sustainable Development Goals(SDG 4.2) 2019 Joint Academic Conference(Tentative Title)**

KICCE plans a joint academic conference for SDG 4.2's promotion and dissemination with related academic societies and NGO's is planned to be held on May 10th, 2019.



## Publications

KICCE issues a wide range of publications to disseminate and share its research outcomes.

**Research Report**

It contains research findings to support reasonable government policies in early childhood education and care. There are major, general, occasional, development reserve and entrusted research projects.

**Korean Journal of Child Care and Education Policy**

It is the only journal of ECEC policy research in Korea and a journal registered in National Research Foundation of Korea. It is published three times a year.

**ECEC Policy Brief**

It provides analysis and realistic policy suggestions on key issues of ECEC and parenting policies. It is published occasionally and is easily accessible for the general public and professionals.

**Issue Paper**

It is a policy analysis issue magazine that analyzes the current ECEC policies and parenting and presents the policy suggestions.

**Annual Paper**

It introduces research findings and major activities of KICCE in the previous year.

**KICCE News Letter**

The 「e-News Letter」, which distributes various news of KICCE online every month, promotes a research report that is most exposed to the media and introduces the recent publications, press reports, events and overseas ECEC policy trends of the month.

**KICCE Policy Forum on ECEC**

It is a quarterly magazine composed of 'Policy Focus,' which analyzes the current issues related to ECEC policies and 'Policy Trends,' which includes domestic and foreign trends of ECEC policies.

**International Journal of Child Care and Education Policy**

It is an international journal about ECEC policies jointly published by KICCE and the National Institute for Early Education Research (NIEER) and was listed on SCOPUS in 2018. The published articles are openly accessible online (<https://ijcccep.springeropen.com>).

**KICCE Policy Brief**

The brief is published in English in order to promote the latest ECEC and parenting policy trends in Korea for the foreign professionals and stakeholders.

**International Trends and Issues in ECEC policies**

The series collects the trends related to ECEC policies in major countries in the world. A total of 23 volumes have been published including Japan(I,II), Sweden(I,II), Australia(I,II), U.K., U.S., Canada, Finland(I,II), France, New Zealand, Taiwan, Norway, Islands, Israel, Netherlands, Denmark, Italia, China and Germany(I,II).

**Major ECEC Statistics**

It is a collection of data and analyses of annual trends based on national statistical data and is published once a year.

**Card News**

Initiated in 2018, card news was published quarterly in order to provide information related to policy research outcomes to the general public in easier ways.

**Video Report**

Initiated in 2018, the video report summarizes the published ECEC policy report using infographics and video materials.

## Online Services

We provide online services to share the research outcomes and useful information to the public.

## KICCE Websites

**Webpage:** <http://www.kicce.re.kr>

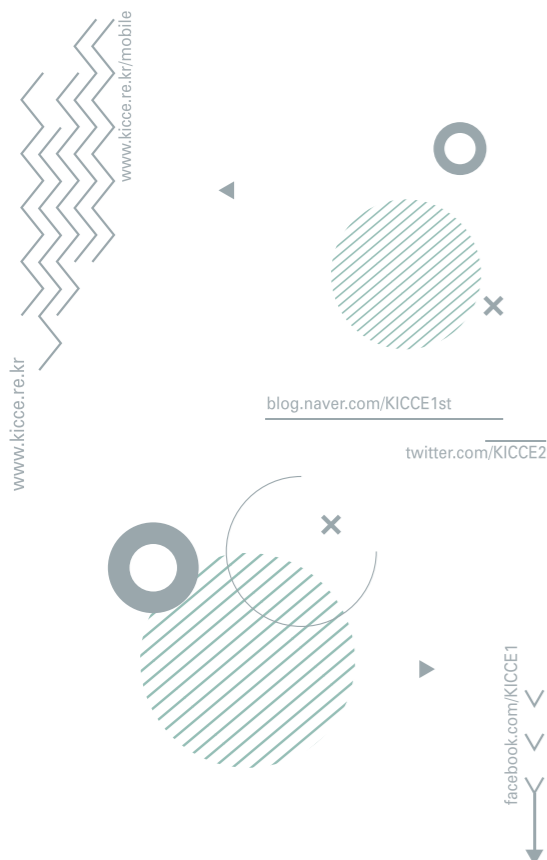
**Mobile webpage:** <http://www.kicce.re.kr/mobile>

**Blog:** <https://blog.naver.com/kicce1st>

**Twitter:** <https://twitter.com/KICCE2>

**Facebook:** <https://www.facebook.com/KICCE1>

You may be updated on the latest news of the institute and the trends of ECEC policies via SNS.



## Family Websites

## KICCE Library

<http://lib.kicce.re.kr>

As Korea's only library specialized in ECEC policy in Korea, it holds research publications, related books and periodicals. You may search the library materials through the electronic library system.

## Happy Childcare Survey(KICCE POL)

<http://ipol.kicce.re.kr>

The I-POL project, which means 'policy' and 'information' for children, ended in 2015. Since 2017, a new project called Happy Childcare Survey(KICCE POL) was initiated as a two-way communication channel with policy consumers, open to anyone's suggestions and opinions on the website.

## Panel Study on Korean Children(PSKC)

<http://panel.kicce.re.kr>

PSKC is a longitudinal study on Korean children from birth to later development, which investigates developmental needs, parents' psychological traits, child-rearing status and child-rearing support's functions and effects in each developmental stage. You may download the panel data free of charge on the website.

## Korean Journal of Child Care and Education Policy

<https://kicce.jams.or.kr>

The website includes online thesis submission and screening system for 「Korean Journal of Child Care and Education Policy」. You may sign up as a member and submit your paper online.

## International Journal of Child Care and Education Policy

<https://ijccep.springeropen.com>

The website includes online thesis submission and screening system for 「International Journal of Child Care and Education Policy」. You may submit your paper and download these free of charge online.

## Epilogue



KICCE will do its best to become a platform for ECEC policies of the future society through "responsibility" as a national research institute, high level of public "ethical awareness" and "communication and cooperation" inside and outside of the institute.