

KOREA INSTITUTE OF CHILD CARE AND EDUCATION

9F, 70, Sogong-ro, Jung-gu, Seoul, Republic of Korea
Tel 02 398 7700 Fax 02 398 7798 www.kicce.re.kr

Published in June, 2021 Published by Sanghee Park, Presidents of KICCE
Designed by YUWOLAE

KOREA INSTITUTE OF CHILD CARE AND EDUCATION

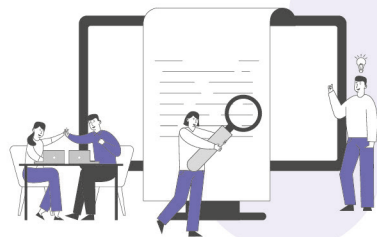
www.kicce.re.kr

PROLOGUE

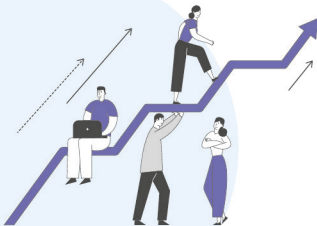
Every child has the right to be healthy and happy.



KICCE will fulfill its duty as an institute for policy research to build a society where family, community, and the government share responsibility for the happy growth of future talent: children.



CONTENTS



Message from President	04
Vision and Mission of 2021~2023	06
History	08
Organization	10
Major Research Projects in 2021	12
Domestic Partners	14
Overseas Partners	15
Major Events in 2021	16
Publications	17
Online Services	18

Message from President



KICCE will formulate early childhood education and care (ECEC) policies that allow the family, society, and the government to join hands to help future talent grow up happily.

KICCE is a government-funded research institute under the umbrella of the National Research Council for Economics, Humanities and Social Sciences (NRC) of the Prime Minister's Office, which aims to research and develop policies on early childhood education and care in a comprehensive and systematic way.

Since its establishment in 2005, when low birthrate emerged as a national crisis in Korea, KICCE has contributed to the development of national policies on children's happiness and healthy development, and in improving child care by conducting research on child care, early childhood education, childbirth, and child-rearing, and working to develop and evaluate relevant policies.

The population figures published by Statistics Korea in 2020 shows that Korea experienced a decline in its natural population for the first time in 50 years, with its total fertility rate dropping to an all-time low of 0.82. The low birthrate and the aging population are accelerating the country's "demographic cliff." In light of the changes in the population structure, a comprehensive national redesign of policy is imperative.


The policy paradigm regarding low birthrate is shifting from existing policies that focus on childcare and early childhood education into more comprehensive policies that support all ages, including children, to allow them to lead happy lives. Moreover, the new policy paradigm seeks to acknowledge and embrace various types of families and to further emphasize gender equality by supplementing the function and value of the traditional family.

The adverse global impact of the COVID-19 pandemic and the environmental changes has created new demands on KICCE regarding ECEC policy. To respond to changes in the underlying policies and new demands in childcare, KICCE will assume more responsibility than ever before as a policy research institute and do its utmost to take the lead in formulating ECEC policy by listening to the communities involved in child care and education communities, and make substantial research efforts.

KICCE will join the effort to improve the quality of life of families and society working to raise future talent, and to enable the country's children to enjoy happy lives.

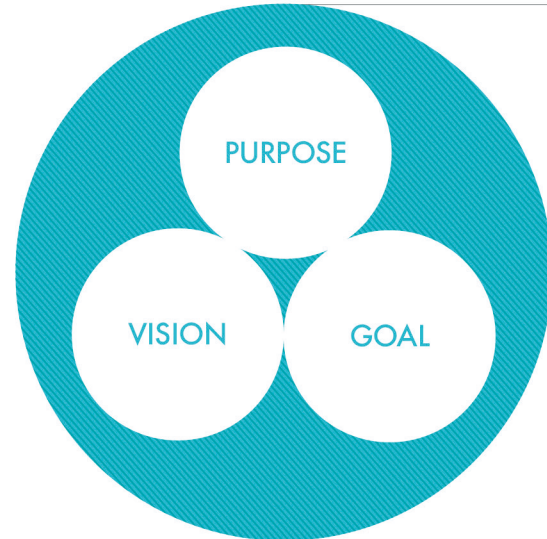
We look forward to your interest and support in the future.

President of Korea Institute of Child Care and Education

Park, Sang Hee 

Vision and Mission of 2021~2023

KOREA INSTITUTE OF CHILD CARE AND EDUCATION



Aim

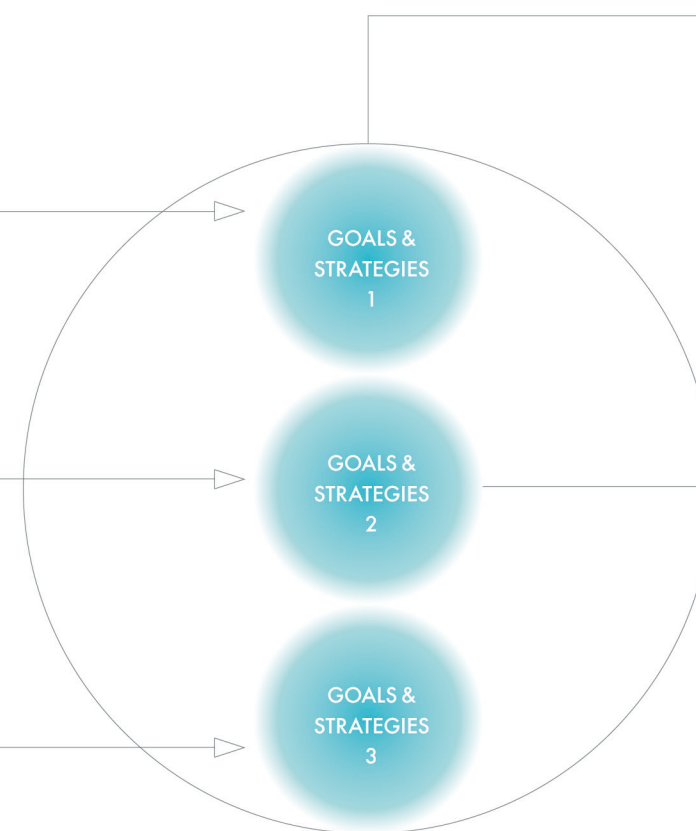
- To serve as a research hub for ECEC policy and promote the happy growth of future talent

Vision

- Contribute in enabling Korea to take a leap toward becoming a global leader in early childhood care and education through comprehensive research on ECEC policies

Middle and long term development goals

- Serve as a leading ECEC research institute for the happy growth of children
- Strive to become a platform for ECEC policy to respond to domestic and foreign agendas
- Fulfill KICCE's social responsibility through management innovation and reinforcement of our status



Management goals and execution strategies



Take the initiative in researching future-oriented policies for the happy growth of children

- Expand scope of research based on children's rights and life stages
- Strengthen research activities on leading policies for the cooperation and development of future-oriented early childhood education and care
- Play a leading role in research to create childcare-friendly families and society
- Improve our research project management system to enhance our contribution to policymaking



Realize a research platform for the ECEC policy to respond to domestic and foreign agendas

- Establish a research platform for domestic and foreign ECEC policies to prepare for the post-pandemic era
- Increase communication with policy beneficiaries and share policy results in various ways
- Create an ECEC policy ecosystem through interdisciplinary convergence and cooperation



Enhance the status of KICCE through inclusive management innovation

- Promote incorporation and strengthen human rights-focused and ethical management
- Build a more inclusive organizational culture to realize social value
- Enhance efficiency of organization management through innovation

History

The following is the timeline of KICCE history since its inception in 2005. It continues to script history with its significant contributions that will make Korea one of the leading countries in developing early childhood education and care policies.

2005

- 08. 17. Establishment and administration policy for KICCE set at the state affairs policy coordination meeting(the 118th meeting presided over by the Prime Minister)
- 09. 30. Signing of MOU's for the establishment and administration of KICCE(with Korean Educational Development Institute, Korea Institute for Health and Social Affairs and Cooperative Center of Korean Women's Development Institute)
- 11. 09. Inauguration of the first president, Dr. Ok Lee
- 12. 26. Opening ceremony of KICCE
- 12. 28. Commissioned as the Childcare Faculty Accreditation Office by the Ministry of Health and Welfare

2006

- 12. 28. Commissioned as the Childcare Teacher Certificate Management Office by the Ministry of Health and Welfare

2008

- 01. 01. Initiation of the Panel Study on Korean Children(PSKC)
- 09. 05. Affiliated institutes modified as Korea Education Development Institute and Korea Institute for Health and Social Affairs based on the amended management regulations
- 10. 31. Inauguration of the second president, Dr. Bok-hee Cho

2009

- 12. 30. Two office duties entrusted by the Ministry of Health and Welfare ended

2010

- 01. 26. Commissioned as ECEC Advancement Support Task Force Team by the Ministry of Education, Science and Technology

2011

- 10. 31. Inauguration of the third president, Dr. Young Lee

2012

- 08. 10. MOU signed with National Institute for Early Education Research(NIEER)

2014

- 09. 17. ECEC Integration Support Team for the Office for Government Policy Coordination launched
- 10. 31. Inauguration of the fourth president, Dr. Nam-hee Woo

2015

- 02. 04. Relocation to Diplomatic Center
- 12. 02. Designated as an OECD ECEC Network Research Institute
- 12. 04. The 6th PSKC Academic Conference for the 10th Anniversary of KICCE

2016

- 11. 24. MOU signed with German Youth Institute(DJI)

2017

- 11. 23. MOU signed with Uzbekistan Ministry of Preschool Education
- 12. 08. Inauguration of the ifth president, Dr. Sun-hee Baek

2018

- 04. 02. MOU signed with UNESCO Bangkok
- 10. 22. MOU signed with SBS Hope Tomorrow Committee
- 12. 'International Journal of Child Care and Education Policy' listed on SCOPUS

2019

- 01. 11. 'PSKC' survey data opened as public data
- 03. 07. MOU signed with Hana Financial Group
- 05. 23. Formation of KICCE Early Childhood Education Support Center

2020

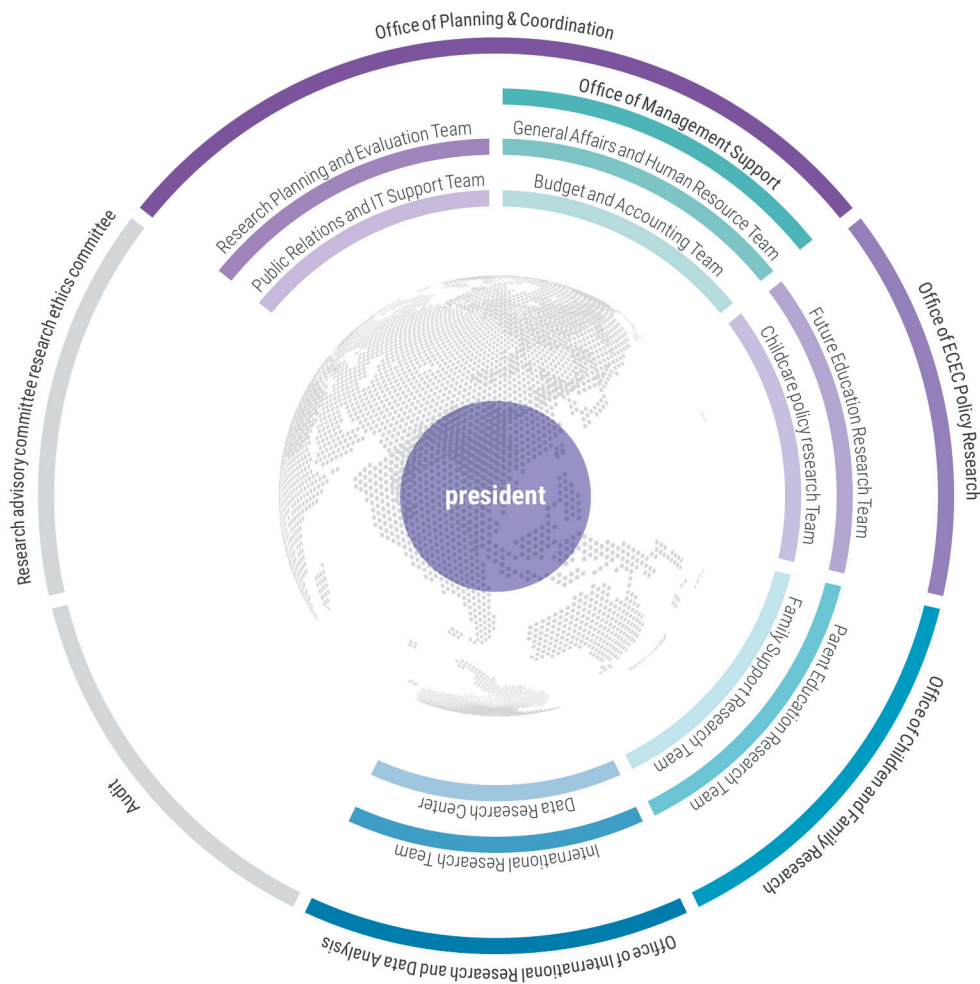
- 01. 15. Formation of KICCE Maternal and Infant Support Center and formation of Future Strategy Promotion Committee
- 07. 23. MOU signed with National Health Insurance Service
- 09. 24. MOU signed with Seoul Housing & Communities Corporation
- 11. 06. The 15th Anniversary of KICCE
- 12. 07. MOU signed with LG Uplus

2021

- 01. 15. Inauguration of the sixth president, Dr. Sang Hee Park
- 02. 19. Formation of Data Research Center
- 04. 07. MOU signed with Korea Association of the Local Support Centers for Childcare

Organization

KICCE is building a happy workplace through open and ethical management for ECEC policy research and policy development to fulfill social values.



Office of Planning & Coordination

Research Planning and Evaluation Team

- Identifies ECEC policy agenda to carry out the leading policy research
- Promotes and manages research projects

Public Relations and IT Support Team

- Issues various publications including Korean Journal of Child Care and Education Policy
- Operates the library
- Manages public relations with domestic and international organizations, producing promotional materials and signing MOUs.
- Handles IT support tasks

Office of Management Support

General Affairs and Human Resource Team

- Is in charge of contracts for research projects and general affairs
- Handles HRD related tasks such as management planning, personnel affairs, salary and training programs

Budget and Accounting Team

- Performs tasks related to budget and accounting for government funding
- Manages entrusted projects
- Conducts management disclosure, taxation and settlement, expenditure and cooperation with related organizations



Office of Children and Family Research

Parent Education Research Team

- Conducts studies on parenting, parental competence and parental support and cooperates with organizations related to parent education

Family Support Research Team

- Carries out inclusive child care policies to support the healthy growth and development of children based on the changing and extended concept of the family



Office of ECEC Policy Research

Future Education Research Team

- Promotes policy research considering current policies on forward-looking early childhood education and the coexistence and connection between early childhood education and care

Childcare policy research Team

- Conducts studies that investigate the current issues of Child Care policies and prepare for the future



Office of International Research and Data Analysis

International Research Team

- Performs international research on early childhood education and care
- Is in charge of networking and cooperations with related institutes
- Identifies and disseminates the ECEC policy trends around the world
- Publishes International Journal of Child Care and Education Policy(IJCCEP)

Data Research Center

- Collects, analyzes and utilizes data and statistics
- Publishes statistical data on ECEC policies encompassing child care and education
- Conducts research on ECEC policies through data and statistics

Major Research Projects in 2021

KICCE selects topics and conducts studies that contribute to the development of ECEC policies by analyzing and evaluating the policies and producing basic data for policymaking.

Major projects

- Mid-term plan of early childhood education and care in Korea 2022-2027
- A study on financial projections of parenting support policy and improvement of sharing structure
- A study on ways to integrate and support education and child care services in rural areas with rapidly declining populations of young children
- Restructuring the child care system and policies for the post-COVID-19 era
- Efficient linkage plan between early childhood education and care institutions and in-home childcare services
- A study on policy measures for appropriate use of media by young children
- A plan to enhance the expertise of ECEC teachers through the utilization of online education platforms
- Policy support to empower multicultural parents for bilingual language development in early childhood
- A study on ways to propagate young children's play culture using Korean traditional games
- A study on supporting families of North Korean defectors with early children to narrow the social gap
- Cross-national comparison of early childhood education and care policies in response to COVID-19

Main Occasional Projects

- A study on the introduction of infant allowance
- A study on strengthening the public system to prevent child abuse recurrence
- Issues and tasks of ECEC compulsory education, free education, and childcare

General Projects

- KICCE poll for establishing the culture of happy childcare(V)
- 2018~2022 Analyses and projects on child-rearing policy(IV):
2020~2021 Child-rearing outcome analyses
- A study on the spending and child-rearing costs of households with young children(IV)
- A study of the KICCE Child-rearing Price Index(CPI)(IV)
- A study on development of child-care-friendly community for coping with lowest-low fertility rate social phenomenon(III)
- A study on monitoring and support measures of 「2019 Revised Nuri Curriculum」(II)
- A study on Paradigm Shift to Cultures with Respect for Child-rearing and Ways to Form Positive Child-rearing Perceptions(III):
Creating a culture of respect for parenting in the family & community.
- The longitudinal study on growth and development of Korean Children 2021(PSKC II)
- Korean ECEC Panel Study

Main Commissioned Projects

- | Ministry of Health and Welfare | A national survey of early childcare 2021
- | Ministry of Education | A survey for the establishment of the third development plan for early childhood education
- | Ministry of Gender Equality and Family | Operation plan of the Idolbom Support Center in metropolitan city
- | 17 Metropolitan and Provincial Offices of Education | Establishing and operation of 2021 Nuri Curriculum Portal
- | National Research Council for Economics, Humanities and Social Sciences | Space for Learning and Caring in Early Childhood Services Under the COVID-19: Current State and Strategies for Consulting

* KICCE carries out various research projects on ECEC policies of central and local governments in Korea as well as of international organizations.

Domestic Partners

ECEC Policy Ecosystem Forum | KICEE operates the ECEC Policy Ecosystem Forum consisting of experts from various related organizations such as academic societies, research institutes, governments, ECEC-related organizations, civic groups, and press and semi-public institutions. The forum aims to proactively identify policy issues in our key research areas and to establish a cooperative system along with academic societies and relevant organizations.

ECEC Policy Site Network | The ECEC Policy Network was established to share opinions on ECEC policy issues and seek convergent solutions. Experts in a diverse range of fields participated in the network.

ECEC Policy Ecosystem

Academic societies	The Korean Society for Early Childhood Education, Korean Association of Child Studies, The Korea Open Association For Early Childhood Education, Korean Association of Childcare & Education, The Korean Society Of Child Welfare, The Korean Family Studies Association, The Korean Society Of Maternal And Child Health, The Korean Society For Early Childhood Education and Care, Korea Child & Family Welfare Association, The Korea Parents Education Association
Research institutes	Korea Development Institute(KDI), Korea Institute for National Unification(KINU), Korea Rural Economic Institute(KREI), Seoul Foundation of Women & Family, Gyeonggido Women & Family Foundation, Korea Research Institute for Local Administration(KRILA), Korea Institute for Health and Social Affairs(KIHASA), Korea Women's Development Institute(KWDI), Korea Research Institute for Human Settlements(KRIHS), Science & Technology Policy Institute(STEPI)
Governments	Ministry of Health and Welfare, Ministry of Education, Ministry of Gender Equality and Family, Ministry of Employment and Labor, Presidential Committee on Ageing Society and Population Policy
ECEC-related organizations	Korea Edu-care Association, National Association of Private Kindergarten, The Korean Association of Public Kindergarten Teachers, Directors' Council of Early Childhood Education & Promotion Centers
Civic groups	Good Neighbors, ChildFund Korea
Press	The Women's News, SBS Hope Tomorrow Committee, Hankyoreh Economy Research Institute
Semi-public institutions	Korea Arts & Culture Education Service, Korea Population, Health and Welfare Association, Korean National Commission for UNESCO, Korean Institute for Healthy Family, National Center for the Rights of the Child, Korea Childcare Promotion Institute

ECEC Policy Ecosystem

Central Support Center for Childcare, Korea Association of the Local Support Centers for Childcare, Political Mamas, National Council of Integrated Childcare Centers for Children with Disabilities, World Without Worries about Shadow Education, National Center for the Rights of the Child, Seoul Metropolitan Office of Education, Play AT, Freinet school STAR

Overseas Partners

As the only ECEC policy research institute in Korea, KICCE has conducted international exchanges on policy research and childcare information through MOUs with various related institutions around the world.

Overseas ECEC policy network

KICCE is actively engaged in international exchanges and academic activities by establishing networks with related institutions and international organizations in various countries.

International organizations	OECD, UNESCO, UNICEF, World Bank, EU etc.
Government departments	UZBEKISTAN Ministry of Preschool Education of the Republic of Uzbekistan
Policy research institutes	U.S. National Institute for Early Education Research, National Aeronautics and Space Administration, CANADA Childcare Resource and Research Unit, GERMANY State Institute of Early Childhood Research, Deutsches Jugendinstitut, CHINA National Institute for Education Sciences of China, CHINA Social Security Research Center of China, Renmin University of China, CHINA Institute of Sociology Shanghai Academy of Social Sciences, JAPAN General Research Institute on the Convention on the Rights of the Child, VIETNAM Vietnam Institute of Educational Sciences Information centers U.S. Education Resources Information Center for Early Childhood Education, U.S. National Child Care Information Center Organizations AUSTRALIA National Childcare Accreditation Council etc.
Academic societies / Associations	Asia-Pacific Regional Network for Early Childhood, Pacific Early Childhood Education Research Association, The Korean-American Early Childhood Education Researchers Association, European Early Childhood Education Research Association, Organisation Mondiale Pour L'Education Prescolaire etc.

Major Events in 2021

KICCE organizes a variety of academic events to communicate with the public, disseminate research outcomes, and lead ECEC policy domestically and internationally.



ECEC Policy Symposium

The ECEC Policy Symposium is one of the major academic events hosted by KICCE that aims to introduce policy alternatives by allowing internal and external experts to share and discuss research trends on current key issues in early childhood education and care.

12th Panel Study on Korean Children Conference

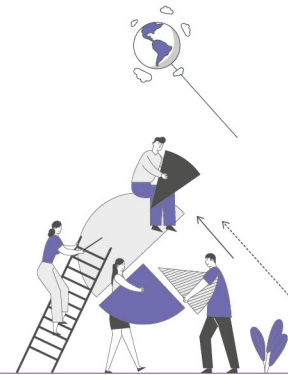
As part of PSKC, a representative longitudinal study of KICCE, a conference will be held at the Korea Chamber of Commerce and Industry on October 1, 2021.

KICCE ECEC Ecosystem Forum

The KICCE ECEC Ecosystem Forum aims to proactively identify policy issues in our key research areas and to establish a cooperative system along with academic societies and relevant organizations. The forum is composed of experts from various related organizations such as academic societies, research institutes, governments, ECEC-related organizations, civic groups, press and semi-public institutions. It will be held twice in 2021, once in the first half of 2021 and again in the second half.

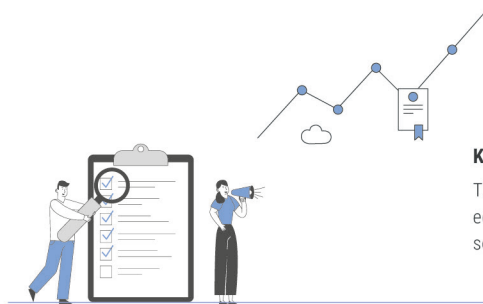
KICCE Policy Seminar

KICCE will organize a policy debate in cooperation with governments, the National Assembly and academic societies in a bid to increase the contribution of research by KICCE to policymaking and to disseminate research results.



KICCE Site Visit Meetings

The KICCE Site Visit Meetings are designed to pay close attention to the child care and education fields, to share opinions on ECEC policy-related issues, and to seek convergent solutions. Two meetings will be held in 2021.



Publications

KICCE issues a wide range of publications to disseminate and share its research outcomes.

Research Report



It contains research findings to support reasonable government policies in early childhood education and care. There are major, general, occasional, development reserve and entrusted research projects.

Korean Journal of Child Care and Education Policy



It is the only journal of ECEC policy research in Korea and a journal registered in National Research Foundation of Korea. It is published thrice a year.

International Journal of Child Care and Education Policy(IJCCEP)



This is the SCOPUS-listed international journal about ECEC policies jointly published by KICCE and the National Institute for Early Education Research(NIEER). The published articles are openly accessible online(<https://ijccep.springeropen.com>).

ECEC Policy Brief



It provides analysis and realistic policy suggestions on key issues of ECEC and parenting policies. It is published occasionally and is easily accessible for the general public and professionals.

KICCE Policy Brief



Published in English, the brief promotes the latest ECEC and parenting policy trends in Korea for foreign professionals and stakeholders.

Issue Paper



It is a policy analysis magazine focusing on current ECEC policies and parenting and presents policy suggestions.

International Trends and Issues in ECEC policies



The series collects the trends related to ECEC policies in major countries. A total of 25 volumes have been published including Japan(I, II, III), Sweden(I, II), Australia(I, II), U.K.(I, II), U.S., Canada, Finland(I, II), France, New Zealand, Taiwan, Norway, Islands, Israel, Netherlands, Denmark, Italia, China and Germany(I, II).

KICCE Policy Forum on ECEC



It is a quarterly magazine composed of "Policy Focus," which analyzes the current issues related to ECEC policies and "Policy Trends," which includes domestic and foreign trends of ECEC policies.

Key Statistics for Infants and Children



It is a collection of data and analyses of annual trends based on national statistical data and is published once a year.

Card News



It is a promotional medium created to share research findings on ECEC policies and child development to the general public in an easy and relatable manner.

Video Report



It is a promotional video created with infographics and materials from policy research reports.

Annual Paper



It introduces research findings and major activities of KICCE of the preceding year.

KICCE Newsletter



The "e-Newsletter" is a monthly online publication that provides various news of KICCE, publishes a research report that has the highest visibility in the media and introduces recent publications, press reports, events, and overseas ECEC policy trends of the month.

Online Services

KICCE operates various online channels
to share useful information.

KICCE Websites

Webpage | <http://www.kicce.re.kr>
YouTube | <http://bitly.kr/kicce>
Twitter | <https://twitter.com/KICCE2>

Mobile webpage | <http://www.kicce.re.kr/mobile>
Blog | <https://blog.naver.com/kicce1st>
Facebook | <https://www.facebook.com/KICCE1>

* You may stay updated on the latest news of the institute and the trends of ECEC policies via SNS.

Family Websites

KICCE Library
<http://lib.kicce.re.kr>

It is Korea's only library specializing in Korea's ECEC policy and holds research publications, related books, and periodicals. The library materials may be searched using the electronic library system.

Panel Study on Korean Children(PSKC)
<http://panel.kicce.re.kr>

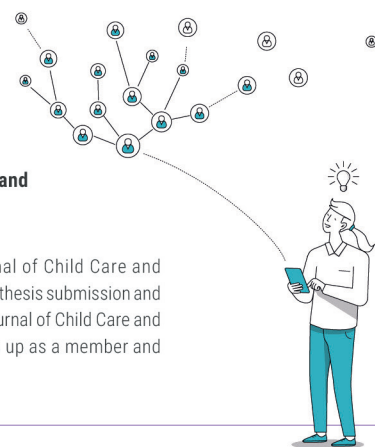
The PSKC is a longitudinal study on Korean children from birth to later development, which investigates developmental needs, parents' psychological traits, child-rearing status, and child-rearing support functions and effects at each developmental stage. The panel data may be downloaded free of charge from the website.

**Korean Journal of Child Care and
Education Policy**
<https://kicce.jams.or.kr>

The website for Korean Journal of Child Care and Education Policy includes online thesis submission and screening system for Korean Journal of Child Care and Education Policy. You may sign up as a member and submit your paper online.

**International Journal of Child Care
and Education Policy**
<https://ijccep.springeropen.com>

The website includes an online thesis submission and screening system for the International Journal of Child Care and Education Policy. You may submit your paper as well as download theses free of charge.



As a policy research institute, Korea Institute of
Child Care and Education (KICCE) will serve as a platform for
education and childcare policy research to foster future talent,
and increase its research capacity in response to changes
in the domestic and global environment.