

KICCE will establish early childhood care and education (ECEC) policies that allow family, society, and the government to join hands and help future talent grow up happily.

# K i c e

Korea Institute of child care and education

# PROLOGUE

# CONTENTS

Every child has the right to be healthy and happy.

KICCE will fulfill its duty as a policy research institute to build a society where family, society, and the government share the responsibility for the positive development of future talent.

Message from President	02
Vision and Mission of 2021~2023	04
History	06
Organization	08
Major Research Projects in 2022	10
Domestic Partners	12
Overseas Partners	13
Major Events in 2022	14
Publications	15
Online Services	16

# Message from President



The Korea Institute of Child Care and Education (KICCE) will establish early childhood care and education (ECEC) policies which allow family, society, and the government to join hands and help future talent help future talent find fulfilment.

KICCE is a government-funded research institute under the umbrella of the National Research Council for Economics, Humanities and Social Sciences (NRC) of the Prime Minister’s Office, which aims to research and develop policies on early childhood education and care in a comprehensive and systematic way.

Since its establishment in 2005, when low birthrate emerged as a national crisis in Korea, KICCE has contributed to the development of national policies on children’s positive as well as, and the healthy development, and in improvement of child care by conducting research on early childhood education, childbirth, and child-rearing, and working to develop and evaluate relevant policies.

We are now beginning to see the possible end of the COVID-19 pandemic, a long dark tunnel that has stretched worldwide. During COVID-19, families with infants and young children experienced various difficulties involving care deficits. After the pandemic, delayed development and learning gaps among infants and young children are emerging as social issues.

Korea's total fertility rate has plunged to the world's lowest at 0.8. According to an audit report on low birthrates and population aging from the Board of Audit and Inspection of Korea (BAI) in 2021, Korea's total population is expected to decline to 36.89 million in 2067 and 15.1 million in 2117, respectively 50 years and 100 years after reaching 51.36 million in 2017. Consequently, there is reason to worry about a population collapse beyond what is being called the 'demographic cliff.'


Under these circumstances, a new government was inaugurated in May 2022. In accordance with the policy goal of 'a society where everyone is happy and in warm company,' the third among the six policy goals set forth by the new government, the creation of safe and high-quality child-rearing environments was selected as a key policy task. In this era of ultra-low birthrates, the government seems to be emphasizing its responsibility to provide a positive environment for child-rearing and a society where children can grow up happily, and not stressing on policies to simply raise the birthrate.

With the inauguration of the new government, improved ECEC environments and happy growth among children are expected.

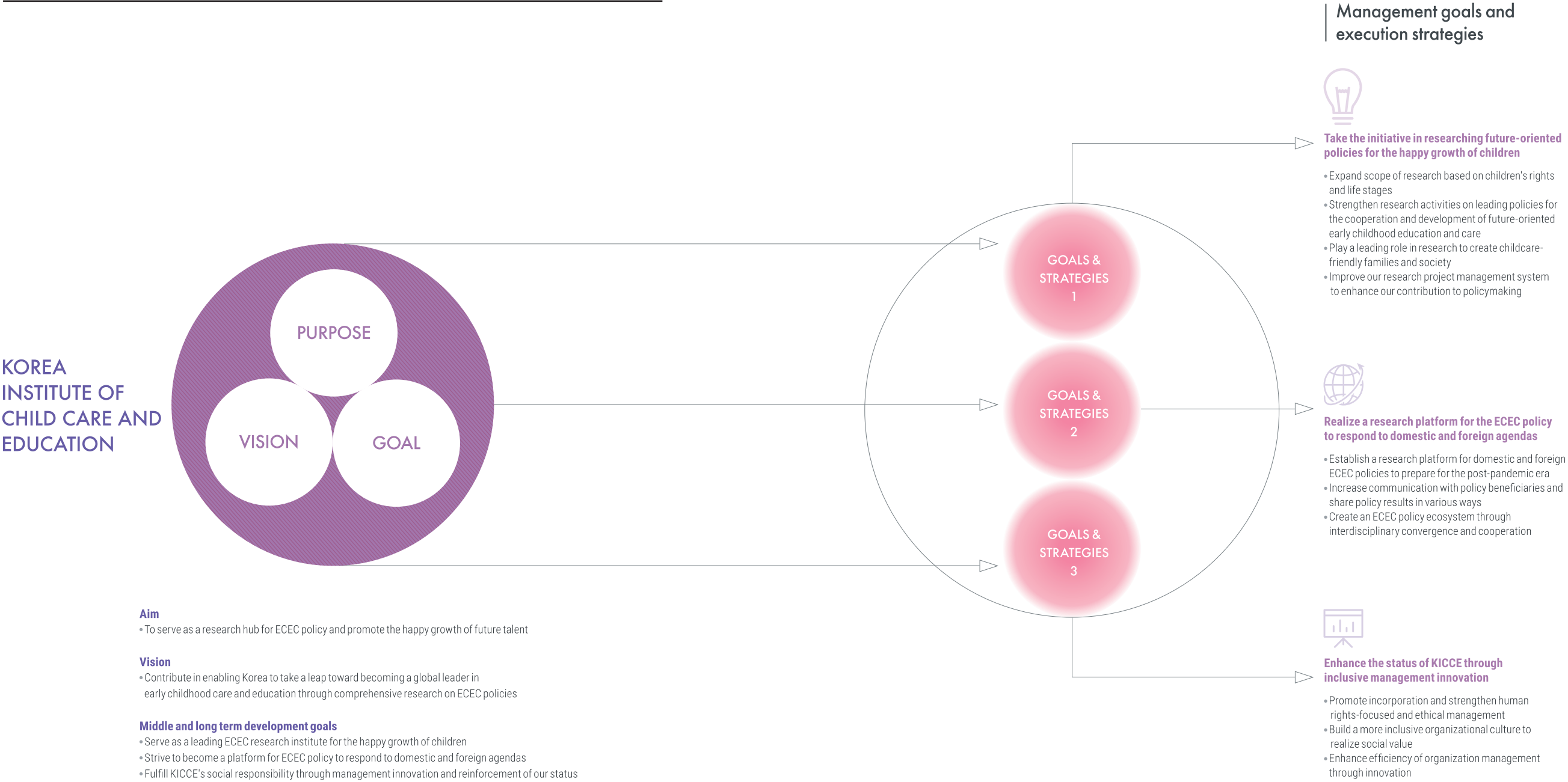
The Korea Institute of Child Care and Education (KICCE) will join the efforts to create a Korea where infants and young children can enjoy safe and happy lives.

We look forward to your unstinting interest and support.  
Thank you.

President of Korea Institute of Child Care and Education

Park, Sang Hee 

# Vision and Mission of 2021~2023





# History

The following is the timeline of KICCE history since its inception in 2005.  
It continues to script history with its significant contributions that  
will make Korea one of the leading countries in developing  
early childhood education and care policies.



2005

- 08. 17. Establishment and administration policy for KICCE set at the state affairs policy coordination meeting(the 118th meeting presided over by the Prime Minister)
- 09. 30. Signing of MOU's for the establishment and administration of KICCE (with Korean Educational Development Institute, Korea Institute for Health and Social Affairs and Cooperative Center of Korean Women's Development Institute)
- 11. 09. Inauguration of the first president, Dr. Ok Lee
- 12. 26. Opening ceremony of KICCE
- 12. 28. Commissioned as the Childcare Faculty Accreditation Office by the Ministry of Health and Welfare

2006

- 12. 28. Commissioned as the Childcare Teacher Certificate Management Office by the Ministry of Health and Welfare

2008

- 01. 01. Initiation of the Panel Study on Korean Children(PSKC)
- 09. 05. Affiliated institutes modified as Korea Education Development Institute and Korea Institute for Health and Social Affairs based on the amended management regulations
- 10. 31. Inauguration of the second president, Dr. Bok-hee Cho

2009

- 12. 30. Two office duties entrusted by the Ministry of Health and Welfare ended

2010

- 01. 26. Commissioned as ECEC Advancement Support Task Force Team by the Ministry of Education, Science and Technology

2011

- 10. 31. Inauguration of the third president, Dr. Young Lee

2012

- 08. 10. MOU signed with National Institute for Early Education Research(NIEER)

2014

- 09. 17. ECEC Integration Support Team for the Office for Government Policy Coordination launched
- 10. 31. Inauguration of the fourth president, Dr. Nam-hee Woo

2015

- 02. 04. Relocation to Diplomatic Center
- 12. 02. Designated as an OECD ECEC Network Research Institute
- 12. 04. The 6th PSKC Academic Conference for the 10th Anniversary of KICCE

2016

- 11. 24. MOU signed with German Youth Institute(DJI)

2017

- 11. 23. MOU signed with Uzbekistan Ministry of Preschool Education
- 12. 08. Inauguration of the ifth president, Dr. Sun-hee Baek

2018

- 04. 02. 12. Concluded a business agreement between UNESCO Bangkok and KICCE 'International Journal of Child Care and Education Policy' listed on SCOPUS

2019

- 01. 11. 'PSKC' survey data opened as public data
- 05. 23. Formation of KICCE Early Childhood Education Support Center
- 12. 23. Relocation to Post Tower, Myeong-dong

2020

- 01. 15. Formation of KICCE Maternal and Infant Support Center and formation of Future Strategy Promotion Committee
- 11. 06. The 15th Anniversary of KICCE

2021

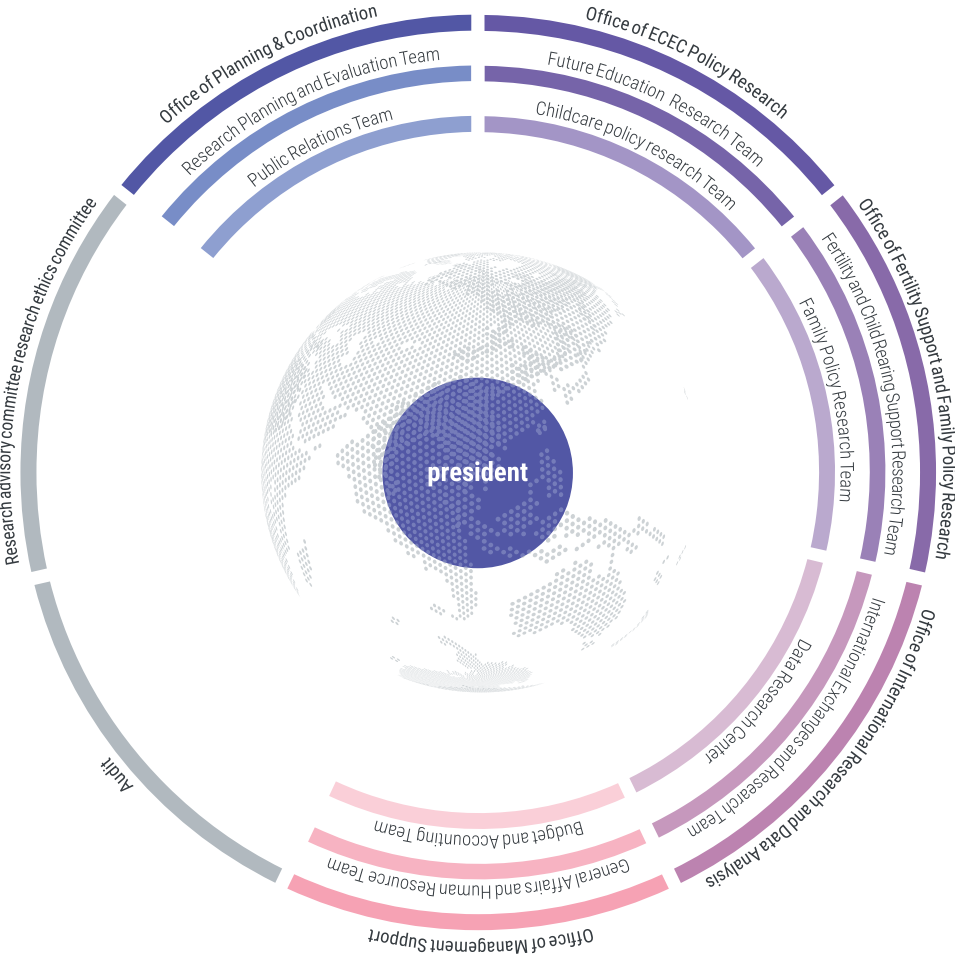
- 01. 19. Inauguration of the sixth president, Dr. Sang Hee Park
- 02. 19. Formation of Data Research Center
- 11. 25. Held the second KICCE ECEC Policy Research Ecosystem Network forum to commemorate the 16th anniversary of the founding of KICCE
- 12. 16. Renewed business agreement with the Ministry of Preschool Education of Uzbekistan

2022

- 01. 12. Concluded a business agreement between three parties: LG U+, the Community Media Foundation, and KICCE
- 05. 03. Held an academic event to commemorate the 100th anniversary of Children's Day

# Organization

KICCE is building a happy workplace through open and ethical management for ECEC policy research and policy development to fulfill social values.



## Office of Planning & Coordination

### Research Planning and Evaluation Team

- Identifies ECEC policy agenda to carry out the leading policy research
- Promotes and manages research projects

### Public Relations Team

- Issues various publications including Korean Journal of Child Care and Education Policy
- Operates library
- Manages public relations with domestic and international organizations, producing promotional materials and signing MOUs.
- Handles IT support tasks



## Office of ECEC Policy Research

### Future Education Research Team

- Promotes policy research considering current policies on forward-looking early childhood education and the coexistence and connection between early childhood education and care

### Childcare policy research Team

- Conducts studies that investigate the current issues of Child Care policies and prepare for the future society



## Office of Fertility Support and Family Policy Research

### Fertility and Child Rearing Support Research Team

- Developing policies to resolve and improve the low birthrate problem, examining current issues for supporting ECEC, and conducting research on related matters

### Family Policy Research Team

- Carries out inclusive child care policies to support the healthy growth and development of children based on the changing and extended concept of the family



## Office of International Research and Data Analysis

### International Exchanges and Research Team

- Performs international research on early childhood education and care
- Is in charge of networking and cooperations with related institutes
- Identifies and disseminates the ECEC policy trends around the world
- Publishes International Journal of Child Care and Education Policy(IJCEEP)

### Data Research Center

- Collects, analyzes and utilizes data and statistics
- Publishes statistical data on ECEC policies encompassing child care and education
- Conducts research on ECEC policies with the use of data and statistics



## Office of Management Support

### General Affairs and Human Resource Team

- Is in charge of contracts for research projects and the general affairs
- Handles HRD related tasks such as management planning, personnel affairs, salary and training programs

### Budget and Accounting Team

- Performs tasks related to budget and accounting for government funding
- Manages entrusted projects
- Conducts management disclosure, taxation and settlement, expenditure and cooperation with related organizations

# Major Research Projects in 2022

KICCE selects topics and conducts studies that contribute to the development of ECEC policies by analyzing and evaluating the policies and producing basic data for policy-making.



- A study on ways to compile and connect financial data for ECEC support policies
- A Study on the Improvement of Time Policy for Equal Childcare Rights( I ): on the Perspective of Reducing the Disparity of Parental Childcare by Employment Type
- The current situation of and systemic improvement measures for households supported by the home child care allowance
- Health support project evaluation and development plan for infants and pregnant women
- Comprehensive analysis of the Panel Study on Korean Children (2008-2020)
- A study on the operational realities of and activation plans for ECEC communities in regional societies
- Enhancing administrative organizations and functions of local offices of education for early childhood education
- Operational realities and improving issues of extended-time teachers, teaching assistants, and substitute teachers in nursery schools
- A study on the establishment of integrative governance system of child care

- Preparation of improvement measures and development of a manual for kindergarten student records
- Means for phased promotion of the integration of early childhood education and care
- A pilot study on developing models of the curriculum implementation for transition from kindergartens to primary schools
- Strategies to Improve the Provision of Healthy Meals and Snacks within Preschools and Kindergartens
- Basic research on model development of teacher-child ratio adjustment pilot project
- A study on the establishment of integrated systems according to the introduction of parental cash benefit

- 2018~2022 Childrearing Policy Analysis and Outcome Evaluation( V ): Focusing on 2021~2022 policies
- KICCE Spending Survey: A Study of Childrearing Costs and Demand for Childcare Services ( V )
- Monitoring and Support Planning of 2019 Revised Nuri Curriculum( III )
- Vulnerable family' parenting-capabilities supporting plans( I ): Supporting strategies for foster families
- An analysis and countermeasures on supply and demand movement of Child care infrastructure in the lowest-low period: focusing on pregnancy and childbirth infrastructure
- A study on ways to close the gaps in development and learning among infants and young children after Covid-19
- A study on the development of kindergarten and daycare center in response to the future environment ( I ): Centering on space innovation
- Comprehensive measures for early detection of and development support for infants and young children with disability risks attending nursery schools and kindergartens ( I ): Conducting a survey and developing early screening tools
- 2022 Longitudinal Study of Growth and Development of Korean Children: Panel Study on Korean Children (PSKC)
- 2022 Korean ECEC(Early Childhood Education and Care) Panel Study

- | Ministry of Health and Welfare | A study on methods to establish the fourth mid- and long-term childcare master plan (2023-2027)
- | Ministry of Health and Welfare | A survey on fulfillment of the obligation to establish a workplace nursery school
- | Ministry of Health and Welfare | Operation of a consulting business for the enhancement of the quality of postpartum care centers in 2022
- | 17 Metropolitan and Provincial Offices of Education | Establishing and operation of 2021 Nuri Curriculum Portal
- | LG U+ | Development of children's digital literacy content for video

Joint studies on wide-ranging ECEC policies with government bodies including the Ministry of Education (MOE), the Ministry of Health and Welfare (MOHW), and the Ministry of Gender Equality and Family (MOGEF), as well as with international organizations and private enterprises

## Domestic Partners

### ECEC Policy Reserch Ecosystem Network

KICEE operates the ECEC Policy Reserch Ecosystem Network consisting of experts from various related organizations such as academic societies, research institutes, governments, ECEC-related organizations, civic groups, and press and semi-public institutions. The network aims to proactively identify policy issues in our key research areas and to establish a cooperative system along with academic societies and relevant organizations.

### ECEC Policy Site Network

The ECEC Policy Network was established to share opinions on ECEC policy issues and seek convergent solutions. Experts in a diverse range of fields participate in the network.



#### ECEC Policy Reserch Ecosystem Network

Academic societies	The Korean Society for Early Childhood Education, Korean Association of Child Studies, The Korea Open Association For Early Childhood Education, Korean Association of Childcare & Education, The Korean Society Of Child Welfare, The Korean Family Studies Association, The Korean Society Of Maternal And Child Health, The Korean Society For Early Childhood Education and Care, Korea Child & Family Welfare Association, The Korea Parents Education Association, The Korean Council for Children's Rights, Korean Society for Early Childhood Teacher Education
Research institutes	Korea Development Institute(KDI), Korea Institute for National Unification(KINU), Korea Rural Economic Institute(KREI), Seoul Foundation of Women & Family, Gyeonggido Women & Family Foundation, Korea Research Institute for Local Administration(KRILA), Korea Institute for Health and Social Affairs(KIHASA), Korea Women's Development Institute(KWDI), Korea Research Institute for Human Settlements(KRIHS), Science & Technology Policy Institute(STEPI)
Governments	Ministry of Health and Welfare, Ministry of Education, Ministry of Gender Equality and Family, Ministry of Employment and Labor, Presidential Committee on Ageing Society and Population Policy
ECEC-related organizations	Korea Edu-care Association, National Association of Private Kindergarten, The Korean Association of Public Kindergarten Teachers, Directors' Council of Early Childhood Education & Promotion Centers
Civic groups	Good Neighbors, ChildFund Korea, National Council of Integrated Childcare Centers for Children with Disabilities
Press	The Women's News, SBS Hope Tomorrow Committee, Hankyoreh Economy Research Institute
Semi-public institutions	Korea Arts & Culture Education Service, Korea Population, Health and Welfare Association, Korean National Commission for UNESCO, Korean Institute for Healthy Family, National Center for the Rights of the Child, Korea Childcare Promotion Institute

#### ECEC Policy Ecosystem

Central Support Center for Childcare, Korea Association of the Local Support Centers for Childcare, Political Mamas, World Without Worries about Shadow Education, National Center for the Rights of the Child, Seoul Metropolitan Office of Education, Play AT, Freinet school STAR

## Overseas Partners

As the only ECEC policy research institute in Korea, KICCE has made international exchanges on policy research and childcare information through MOUs with various related institutions around the world.



#### Overseas ECEC policy network

KICCE is actively engaged in international exchanges and academic activities by establishing networks with related institutions and international organizations in various countries.

International organizations	OECD, UNESCO, UNICEF, World Bank, EU etc.
Government departments	UZBEKISTAN Ministry of Preschool Education of the Republic of Uzbekistan
Policy research institutes	U.S. National Institute for Early Education Research, National Aeronautics and Space Administration, CANADA Childcare Resource and Research Unit, GERMANY State Institute of Early Childhood Research, Deutsches Jugendinstitut, CHINA National Institute for Education Sciences of China, CHINA Social Security Research Center of China, Renmin University of China, CHINA Institute of Sociology Shanghai Academy of Social Sciences, JAPAN General Research Institute on the Convention on the Rights of the Child, VIETNAM Vietnam Institute of Educational Sciences Information centers U.S. Education Resources Information Center for Early Childhood Education, U.S. National Child Care Information Center Organizations AUSTRALIA National Childcare Accreditation Council etc.
Academic societies / Associations	Asia-Pacific Regional Network for Early Childhood, Pacific Early Childhood Education Research Association, The Korean-American Early Childhood Education Researchers Association, European Early Childhood Education Research Association, Organisation Mondiale Pour L'Education Prescolaire etc.



## Major Events in 2022

KICCE holds a variety of academic events in order to communicate with the public, disseminate research outcomes, and to lead ECEC policy domestically and internationally.



ECEC Policy Symposium

The ECEC Policy Symposium is one of the major academic events hosted by KICCE with the aim to come up with policy alternatives by allowing internal and external experts to share and discuss research trends on current key issues in early childhood education and care.



ECEC Policy Research Ecosystem Network

The ECEC Policy Research Ecosystem Network aims to proactively identify policy issues in our key research areas and to set up a cooperative system along with academic societies and relevant organizations. The network is composed of experts from various related organizations such as academic societies, research institutes, governments, ECEC-related organizations, civic groups, press and semi-public institutions. It will be held twice in 2021, once in the first half of 2022 and again in the second half.



KICCE special forum for the integration of early childhood education and care

KICCE plans to host a forum on issues and tasks related to the new government's integration of early childhood education and care as part of the research on means for phased promotion of integrating early childhood education and care, which is being conducted by request of the MOE and the MOHW.



13th Panel Study on Korean Children Conference

As part of PSKC, a representative longitudinal study of KICCE, a conference will be held at the Korea Chamber of Commerce and Industry on September 23, 2022.



KICCE policy debate

KICCE will provide a policy debate in cooperation with governments, the National Assembly and academic societies in a bid to increase the contribution of research by KICCE to policymaking and to disseminate research results.

## Publications

KICCE issues a wide range of publications to disseminate and share its research outcomes.



### Research Report

It contains research findings to support reasonable government policies in early childhood education and care. There are major, general, occasional, development reserve and entrusted research projects.



### Korean Journal of Child Care and Education Policy

It is the only journal of ECEC policy research in Korea and a journal registered in National Research Foundation of Korea. It is published three times a year.



### International Journal of Child Care and Education Policy(IJCCEP)

This is the SCOPUS-listed international journal about ECEC policies jointly published by KICCE and the National Institute for Early Education Research(NIEER). The published articles are openly accessible online (<https://ijccep.springeropen.com>).



### ECEC Policy Brief

It provides analysis and realistic policy suggestions on key issues of ECEC and parenting policies. It is published occasionally and is easily accessible for the general public and professionals.



### KICCE Policy Brief

The brief is published in English in order to promote the latest ECEC and parenting policy trends in Korea for the foreign professionals and stakeholders.



### Issue Paper

It is a policy analysis issue magazine that analyzes the current ECEC policies and parenting and presents the policy suggestions.



### International Trends and Issues in ECEC policies

The series collects the trends related to ECEC policies in major countries in the world. A total of 27 volumes have been published including Japan( I , II , III), Sweden( I , II), Australia( I , II), U.K.( I , II), U.S.( I , II), Canada, Finland( I , II), France, New Zealand, Taiwan, Norway, Islands, Israel, Netherlands, Denmark, Italia, China and Germany( I , II).



### KICCE Policy Forum on ECEC

It is a quarterly magazine composed of 'Policy Focus,' which analyzes the current issues related to ECEC policies and 'Policy Trends,' which includes domestic and foreign trends of ECEC policies.



### Key Statistics for Infants and Children

It is a collection of data and analyses of annual trends based on national statistical data and is published once a year.



### Annual Paper

It introduces research findings and major activities of KICCE in the previous year.



### Card News

It is a promotional medium created to share research findings on ECEC policies and child development to the general public in easier and relatable manners.



### KICCE NEWS LETTER

The 'e-News Letter', which distributes various news of KICCE online every month, promotes a research report that is most exposed to the media and introduces the recent publications, press reports, events and overseas ECEC policy trends of the month.



### Video Report

It is a promotional video created with infographics and materials from policy research reports.



# Online Services

KICCE operates various online channels to share useful information.

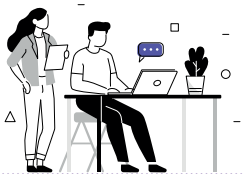
## KICCE Websites



- Webpage | <http://www.kicce.re.kr>
- YouTube | <https://url.kr/kicce>
- Blog | <https://blog.naver.com/kicce1st>
- Twitter | <https://twitter.com/KICCE2>
- Facebook | <https://www.facebook.com/KICCE1>

\* You may be updated on the latest news of the institute and the trends of ECEC policies via SNS.

## Family Websites



**KICCE Library**  
<http://lib.kicce.re.kr>

It is Korea ’s only library specializing in Korea’s ECEC policy and holds research publications, related books, and periodicals. The library materials may be searched using the electronic library system.

**KICCE Repository**  
<https://repo.kicce.re.kr>

KICCE collects the results of research tasks and offers them online, and has established a researcher page for information on and achievements of respective researchers.

**Panel Study on Korean Children(PSKC)**  
<http://panel.kicce.re.kr>

PSKC is a longitudinal study on Korean children from birth to later development, which investigates developmental needs, parents’ psychological traits, child-rearing status and child-rearing support’s functions and effects in each developmental stage. You may download the panel data free of charge on the website.

**Korean ECEC Panel Study**  
<https://panel.kicce.re.kr/kececp/index.do>

The Korean ECEC Panel Study is a study that continuously tracks the growth and development of children from the fetus through elementary school in the context of the dynamic relations with the complex and multifaceted environments that surround children and their families.

**Korean Journal of Child Care and Education Policy**  
<https://kicce.jams.or.kr>

The website includes online thesis submission and screening system for 「Korean Journal of Child Care and Education Policy」. You may sign up as a member and submit your paper online.

**International Journal of Child Care and Education Policy**  
<https://ijcecp.springeropen.com>

The website includes online thesis submission and screening system for 「International Journal of Child Care and Education Policy」. You may submit your paper and download theses free of charge online.



As a policy research institute, Korea Institute of Child Care and Education (KICCE) will serve as a platform for education and childcare policy research to foster future talent, and increase its research capacity in response to changes in the domestic and global environment.

