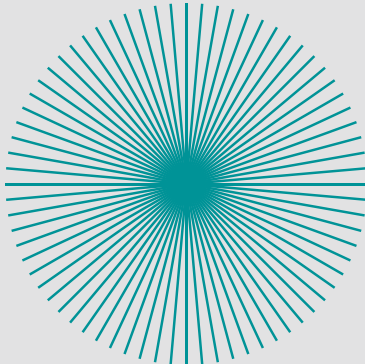
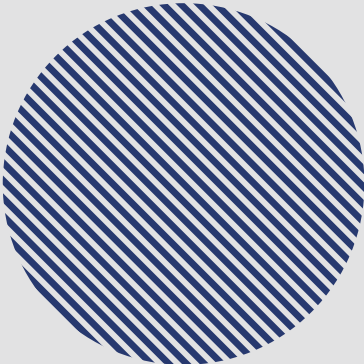




**KOREA
INSTITUTE OF
CHILD CARE
AND EDUCATION**

KICCE is shaping a promising future
for children by redesigning policies
based on scientific research.

**KICCE aims to foster
a healthier, more enjoyable,
and enriching childhood experience.**



KOREA INSTITUTE OF CHILD CARE AND EDUCATION

CONTENTS

02

Prologue

04

Vision and Mission

06

History

08

Organization and
Operational Status

10

Key Research Areas

14

National Partners

15

International Partners

16

Publications

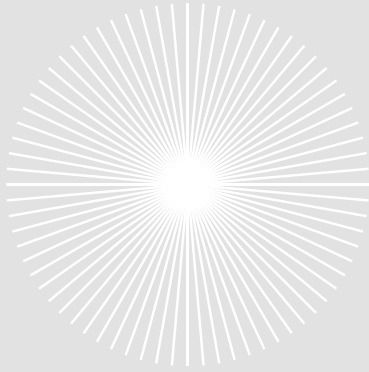
18

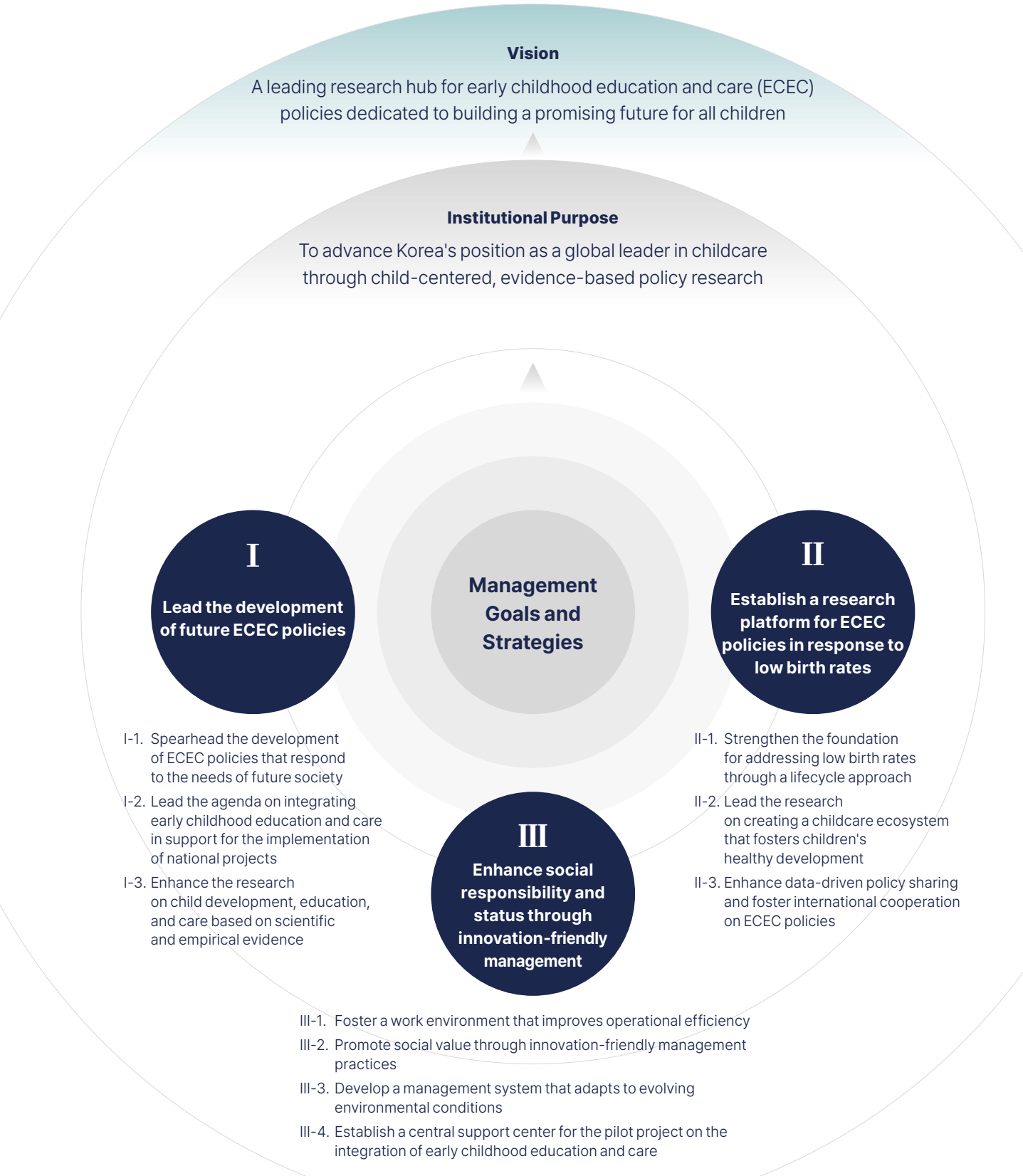
Online Services



Vision and Mission

**KICCE will carefully consider policies
for a promising future for all children.**





History

The following is the timeline of KICCE history its establishment in 2005.
Today, KICCE continues to work toward changes in early childhood education and care policies.

2005

- 08. 17.** Establishment and administration policy for KICCE set at the state affairs policy coordination meeting(the 118th meeting presided over by the Prime Minister)
- 09. 30.** Signing of MOU's for the establishment and administration of KICCE(with Korean Educational Development Institute, Korea Institute for Health and Social Affairs and Cooperative Center of Korean Women's Development Institute)
- 11. 09.** Inauguration of the first president, Dr. Ok Lee
- 12. 26.** Opening ceremony of KICCE
- 12. 28.** Commissioned as the Childcare Faculty Accreditation Office by the Ministry of Health and Welfare

2006

- 12. 28.** Commissioned as the Childcare Teacher Certificate Management Office by the Ministry of Health and Welfare

2008

- 01. 01.** Initiation of the Panel Study on Korean Children(PSKC)
- 09. 05.** Affiliated institutes modified as Korea Education Development Institute and Korea Institute for Health and Social Affairs based on the amended management regulations
- 10. 31.** Inauguration of the second president, Dr. Bok-hee Cho

2009

- 12. 30.** Two office duties entrusted by the Ministry of Health and Welfare ended

2010

- 01. 26.** Commissioned as ECEC Advancement Support Task Force Team by the Ministry of Education, Science and Technology

2011

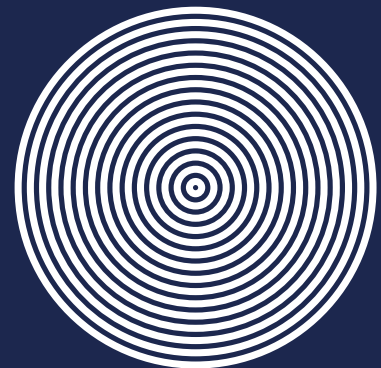
- 10. 31.** Inauguration of the third president, Dr. Young Lee

2012

- 08. 10.** MOU signed with National Institute for Early Education Research(NIEER)

2014

- 10. 31.** Inauguration of the fourth president, Dr. Nam-hee Woo



2015

- 02. 04.** Relocation to Diplomatic Center
- 12. 02.** Designated as an OECD ECEC Network Research Institute
- 12. 04.** The 6th PSKC Academic Conference for the 10th Anniversary of KICCE

2016

- 11. 24.** MOU signed with German Youth Institute(DJI)

2017

- 11. 23.** MOU signed with the Ministry of Preschool Education of the Republic of Uzbekistan
- 12. 08.** Inauguration of the fifth president, Dr. Sun-hee Baek

2018

- 04. 02.** Concluded a business agreement between UNESCO Bangkok and KICCE
- 12.** 'International Journal of Child Care and Education Policy' listed on SCOPUS

2019

- 01. 11.** 'PSKC' survey data opened as Open Government Data
- 12. 23.** Relocation to Post Tower, Myeong-dong

2020

- 11. 06.** The 15th Anniversary of KICCE

2021

- 01. 19.** Inauguration of the sixth president, Dr. Sang Hee Park
- 02. 19.** Launched the Data research center
- 12. 16.** Renewed business agreement with the Ministry of Preschool Education of the Republic of Uzbekistan

2022

- 05. 03.** Hosted the Academic Event in Celebration of the 100th anniversary of Children's Day
- 10. 04.** MOU signed with LEGO Korea and the LEGO Foundation

2023

- 02. 23.** MOU signed with Islamic World Educational, Scientific and Cultural Organization (ICESCO)
- 03. 07.** Launched Task Force for the Integration of ECEC











2024

- 01. 26.** Launched the Post-natal care service consulting center
- 05. 09.** Inauguration of the seventh president, Dr. Ock Kyeong Hwang
- 09. 24** Launched the Central Support Center for the Pilot Project on Integration of Early Childhood Education and Care
- 10. 29** Hosted the LEGO-KICCE Roundtable: Skills for the 21st Century – the Value of Creative Play

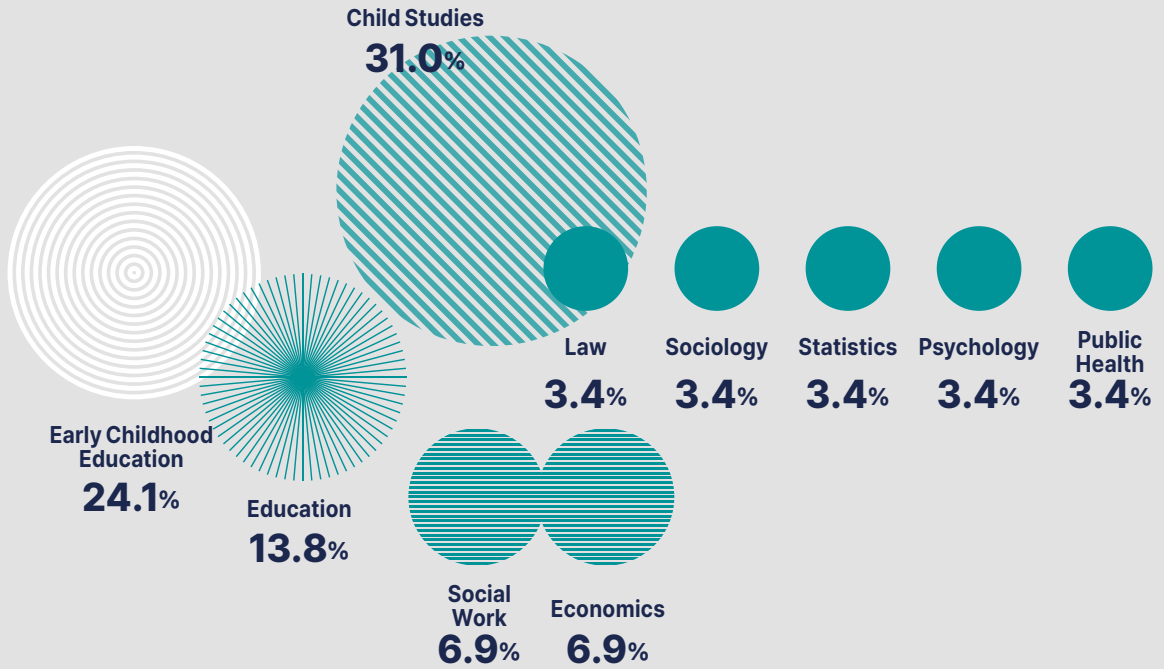
Organization and Operational Status

KICCE envisions a nurturing and productive future for children,
aspiring to create a world where every child can thrive in happiness.

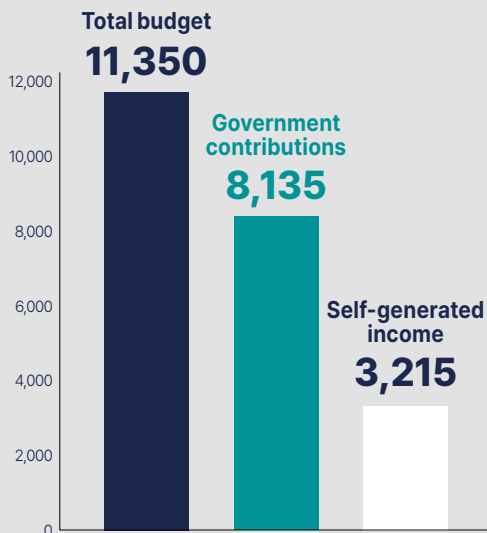
Personnel (as of September 2024)

<u>Senior Research Fellow</u>		11	
<u>Research Fellow</u>		12	
<u>Associate Research Fellow</u>		6	
<u>Principal Researcher</u>		9	
<u>Researcher</u>		6	
<u>Contracted Researcher</u>		10	
<u>Lead Administrative Staff</u>		5	
<u>Senior Administrative Staff</u>		5	<u>Research Intern</u>  1
<u>Administrative Staff</u>		5	<u>Administrative Intern</u>  1

Research Department



2024 Budget (KRW million)



Number of Research Projects (2006-2024)



Key Research Areas

KICCE spearheads the development of future early childhood education and care (ECEC) policies through child-centered, evidence-based policy research, while serving as a research platform for ECEC policies aimed at addressing low birth rates from a life-cycle perspective.

KICCE leads the development of forward-looking childcare policies that address the evolving needs of future society.

////////////////////////////////////

We propose evidence-based policy solutions to tackle emerging challenges amid rapid future changes, such as population decline and regional extinction.

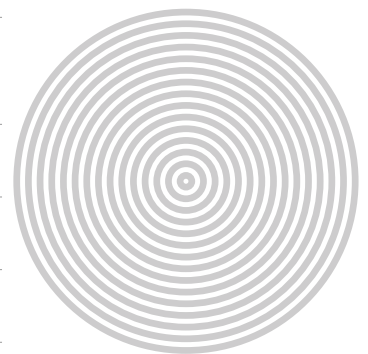
- Research on improving the establishment of kindergartens in line with the characteristics of special areas such as rural communities and cities with new towns
- Development of a linked operational model between kindergartens and schools: Focusing on regions at risk of regional extinction
- [National Research Council for Economics, Humanities, and Social Sciences] Analysis of ECEC policy agendas in response to population and social changes, and research on plans for systemic reform

We propose medium- to long-term development policies that support the healthy growth and development of infants and young children, while promoting innovation in early childhood education and care.

- A study on experiences of private education among infants and young children in correlation with their development
- Comprehensive strategies for the early screening and intervention for young children at risk of disability in ECEC institutes (III): Standardization of screening tools and development of support models for children at risk of disability
- Policy performance and tasks of ECEC (II): Focusing on the outcome evaluation of the national plan of ECEC

We advance the development of innovative ECEC policies that respond to the rapidly-changing digital and AI landscape in the childcare sector.

- A study on the implementation status and response measures for digital transformation in the childcare sector
- [17 Metropolitan and Provincial Offices of Education] 2024 Nuri Curriculum portal operation project
- [Samsung Welfare Foundation] Basic research on the establishment of a developmental support platform for infants and young children



Key Research Areas	Korea Institute of Child Care and Education	11
--------------------	---	----

KICCE formulates policies for the successful integration of early childhood education and care.



We support the implementation of national projects aimed at creating a safe, high-quality caregiving environment and promoting a national education responsibility system, while also conducting research on strategies for the establishment and implementation of integrated early childhood education and care.

- A study on the performance evaluation and developmental strategies for public childcare centers: Focusing on defining roles in preparation for the integration of early childhood education and care
- Monitoring and improving outcomes of the integration of early childhood education and care (II)
- Reorganizing plans for college departments of early childhood teacher training programs

We support field-based research to improve the quality of early childhood education and care, as well as policy projects designed to ensure the successful integration of early childhood education and care.

- Establishment of criteria for the founding of integrated ECEC institutions and the transfer of childcare-related responsibilities in each region
- A study on the development of promotion and training systems for kindergartens and childcare centers following the integration of early childhood education and care
- [Ministry of Education] Policy research on the development of curricula for children aged 0-2
- [Ministry of Education] A study on the development of operational guidelines for institutions following the integration of early childhood education and care
- [Gyeonggido Office of Education] Management and monitoring of region-based innovation support projects for early childhood education and care
- [Gyeongsangnamdo Office of Education] Establishment of a support system for after-school programs in kindergartens



KICCE conducts research to promote a happier life for children and families.

////////////////////////////////////

We study the importance of early childhood and propose caregiving environments and policies that foster a child-friendly society.

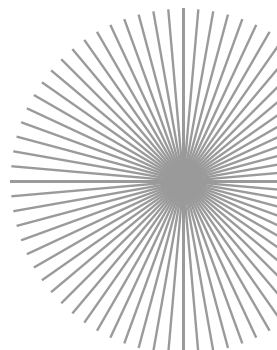
We support the creation of beneficiary-centered, supportive childcare environments to promote the healthy growth of children.

-
- The current status and pending tasks in relation to the social exclusion of children: Focusing on the diagnosis of hate and discrimination against children
-
- A Study on the institutional development of cash benefits for a childcare policy roadmap
-
- Strategies for improving the quality of life among child-rearing households
-
- A study on supporting parental competence in vulnerable families (III): Support strategies for strengthening the parenting competence of parents with disabilities
-
- A survey on the working conditions of parents with infants: A study based on households in the Korean ECEC Panel
-

We assess the direction of marriage and family policies by examining values and perceptions related to marriage and family, subsequently restructuring policies as needed.

We also develop policies to establish a foundation for a support system that promotes healthy pregnancy and childbirth.

-
- [Presidential Committee on Ageing Society and Population Policy] Research on perceptions of marriage, childbirth, and childcare
-
- [Presidential Committee on Ageing Society and Population Policy] Research on perceptions of marriage, childbirth, childcare, and government measures on low birth rates
-
- [Ministry of Economy and Finance] A survey on the status of marriage services
-
- [Ministry of Health and Welfare] 2024 postnatal care status survey
-
- [Ministry of Health and Welfare] Consultancy project to improve the quality of postnatal care centers
-
- [Ministry of Health and Welfare] Research on the development of a standard service manual for postnatal care centers
-
- [Ministry of Health and Welfare] Research on the improvement of staffing standards for postnatal care centers
-



KICCE supports the growth and development of Korean children through data-driven research.

////////////////////////////////////

We provide a platform for the open access and utilization of public data related to early childhood by conducting longitudinal panel studies that collect data on the education, care, growth, and development of Korean infants and young children.

-
- 2024 Longitudinal study of growth and development of Korean children: Panel Study on Korean Children (PSKC)
 - Korean Early Childhood Education and Care Panel Study 2024
-

We continuously collect and analyze data to establish an integrated data system for infants and young children in the future.

-
- A longitudinal study on the development of children from the COVID generation (I)
 - A support study on the survey of private education expenses for infants and young children
 - A study of childrearing costs and demand for childcare services (KICCE spending survey 2024)
 - [Ministry of Health and Welfare] 2024 national childcare status survey
-

KICCE shares domestic and international research outcomes through active global exchanges and strengthens the framework for international research cooperation.

////////////////////////////////////

We explore global common issues such as low birth rates and the integration of early childhood education and care by sharing domestic and international research outcomes, and reinforce research collaboration through continuous engagement with international organizations.

-
- Basic research on the development of a Korean version of the International Early Learning and Child Well-being Study tools
 - [Ministry of Education] Basic research for the implementation of the second cycle of the OECD International Early Learning and Child Well-being Study
 - [KDI School of Public Policy and Management] Joint policy advisory research on early childhood education in Cambodia
 - [Korean Women's Development Institute] A study on methods for producing international comparative indicators of childcare (II)
-

National Partners

As Korea's leading ECEC policy research institute, KICCE is strengthening its collaboration with various government ministries, public institutions, related public organizations, and the private sector to support the healthy growth and development of infants and young children. Through active research, educational cooperation, and collaborative exchanges, KICCE contributes to the improvement and advancement of ECEC policies, while promoting the qualitative enhancement of early childhood education and care.

Domestic ECEC policy network

Public institutions	National Library of Korea
	National Institute for Lifelong Education
	Community Media Foundation
	National Center for the Rights of the Child
	Childcare center Safety & Insurance Association
	Overseas Koreans Cooperation Center
	Korea Arts & Culture Education Service
	Korea Human Resource Development Institute for Health & Welfare
	Korea Press Foundation
	Korea Research Institute for Local Administration
Private sector organizations	Good Neighbors
	Korean Pediatric Society
	Korean Society of Pediatric Behavior and Development Medicine
	Korean Children's Hospital Association
	Okedongmu
	Korea Childcare Broadcasting
	Korea Population, Health and Welfare Association
	ChildFund Korea
	Hana Financial Group
	Korean Society of Maternal and Child Health
	CBS
LEGO Korea	
LG Uplus	
SBS Hopeful Tomorrow Committee	
Government ministries	17 Metropolitan and Provincial Offices of Education
Affiliated public organizations	Korean National Commission for UNESCO



International Partners

As the only exclusive ECEC policy research institute in Korea, KICCE engages in international exchanges focused on policy research and sharing childcare information through MOUs with relevant institutions around the world.



Overseas ECEC policy network

KICCE has built a network with partner institutions and international organizations in various countries, fostering active international exchanges and academic collaboration.

International organizations	OECD, UNESCO Bangkok, Islamic World Educational, Scientific and Cultural Organization (ICESCO)
Government ministries	UZBEKISTAN Ministry of preschool and school education
Policy research institutes	U.S. National Institute for Early Education Research (NIEER), CANADA Childcare Resource and Research Unit (CRRU), GERMANY German Youth Institute (DJI), CHINA National Institute for Education Sciences of China (NIES), CHINA Social Security Research Center of China, Renmin University of China, CHINA Institute of Sociology Shanghai Academy of Social Sciences (SCDRC), JAPAN General Research Institute on the Convention on the Rights of the Child (GRI. CRC), VIETNAM Vietnam Institute of Educational Sciences (VINES)
Academic societies and associations, Private sector organizations, etc.	Asia-Pacific Regional Network for Early Childhood (ARNEC), LEGO, LEGO Foundation

Publications

KICCE issues a wide range of publications to disseminate its research outcomes.

Research Report

It contains research findings that support sound government policies in early childhood education and care. The research is categorized into major, general, occasional, research and development reserve and entrusted research projects.



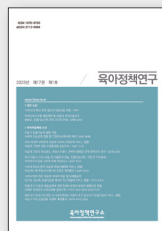
International Trends and Issues in ECEC policies

This series compiles trends in ECEC policies from major countries around the world. A total of 30 volumes have been published covering countries such as Japan (I, II, III), Sweden (I, II), Australia (I, II, III), the U.K. (I, II), the U.S. (I, II), Canada, Finland (I, II), France, New Zealand (I, II), Germany (I, II), Taiwan, Norway (I, II), Ireland, Israel, the Netherlands, Denmark, Italy, China, and Singapore.



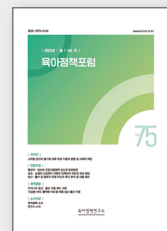
Korean Journal of Child Care and Education Policy

It is the only journal dedicated to ECEC policy research in Korea and is registered with the National Research Foundation of Korea. The journal is published three times a year.



KICCE Policy Forum on ECEC

It is a quarterly magazine consisting of 'Policy Focus,' which analyzes current issues related to ECEC policies, and 'Policy Trends,' which covers both domestic and international ECEC policies trends.



International Journal of Child Care and Education Policy

This SCOPUS-listed international journal on ECEC policies is jointly published by KICCE and the National Institute for Early Education Research (NIEER). All published articles are openly accessible online at <https://ijccep.springeropen.com>.



Key Statistics for Infants and Children

It is an annual publication that compiles data and analyzes trends based on national statistics.



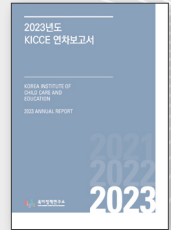
ECEC Policy Brief

It offers analysis and practical policy recommendations on key issues related to ECEC and parenting policies. The publication is released periodically and is easily accessible to both the general public and professionals.



Annual Paper

It highlights KICCE's research findings and major activities from the previous year.



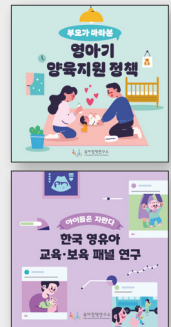
KICCE Policy Brief

This English brief shares the latest ECEC and parenting policy trends in Korea with foreign professionals and stakeholders.



Card News

It is a promotional platform designed to share research findings on ECEC policies and child development with the general public in an accessible and relatable manners.



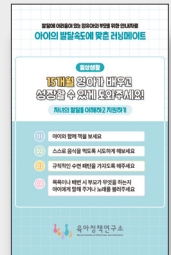
Issue Paper

It is a policy analysis magazine that reviews current ECEC and parenting policies and offers policy recommendations.



Video Reports and Shorts

These promotional videos offer concise summaries of published policy research reports, using infographics and video content to deliver clear and engaging presentations.



Overseas ECEC Policy Report

This report offers an in-depth review and analysis of overseas ECEC policy cases, providing key insights and implications for adopting relevant policies in Korea.



KICCE e-News Letter

The 'e-News Letter', distributed online monthly, shares various news from KICCE, promotes the most media-exposed research reports, and highlights recent publications, press coverage, events, and international ECEC policy trends of the month.



Online Services

KICCE operates a variety of online platforms to share valuable information.

KICCE Websites

Webpage | <https://kicce.re.kr>

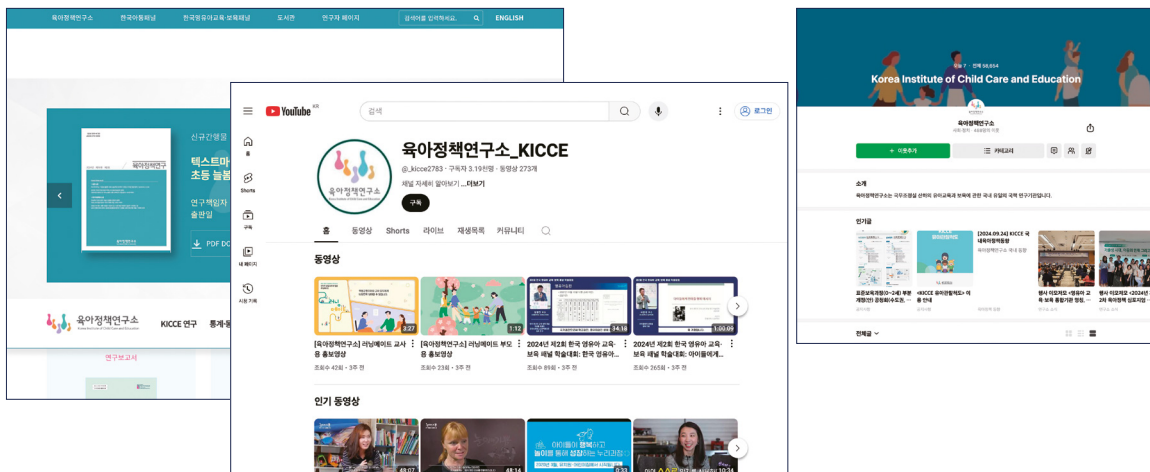
Instagram | <https://www.instagram.com/kicce.re.kr>

Facebook | <https://www.facebook.com/KICCE2>

YouTube | https://www.youtube.com/@_kicce2783

Blog | <https://blog.naver.com/kicce1st>

* You can stay updated on the latest news from the institute and the trends in ECEC policies through our social media channels.



KICCE Library

<https://lib.kicce.re.kr>

It is Korea's only library specializing in ECEC policy, housing research publications, related books, and periodicals. Library materials can be searched through the electronic library system.

Korean Journal of Child Care and Education Policy

<https://kicce.jams.or.kr>

The website features an online thesis submission and review system for the 'Korean Journal of Child Care and Education Policy'. You can register as a member and submit your paper online.

Panel Study on Korean Children(PSKC)

<http://panel.kicce.re.kr>

PSKC is a longitudinal study on Korean children, tracking their development from birth onward. It examines developmental needs, parents' psychological traits, child-rearing conditions, and the functions and effects on child-rearing support at each developmental stage. You can download the panel data free of charge from the website.

KICCE Repository

<https://repo.kicce.re.kr>

KICCE collects research outcomes and makes them available online, and has established individual researcher page to provide information and showcase the achievements of each researchers.

International Journal of Child Care and Education Policy

<https://ijccp.springeropen.com>

The website features an online thesis submission and review system for the 'International Journal of Child Care and Education Policy'. You can submit your paper and download theses free of charge online.

Korean ECEC Panel Study

<https://panel.kicce.re.kr/kececp>

The Korean ECEC Panel Study is a longitudinal study that continuously tracks the growth and development of children from the prenatal stage through elementary school, focusing on their dynamic interactions with the complex, multifaceted environments surrounding them and their families.

2024